



**THE FEDERAL
REDISTRIBUTION
NORTHERN TERRITORY**

Suggestion 6

Country Liberal Party

10 pages

Redistribution Committee for Northern Territory
Australian Electoral Commission
Locked Bag 4007
Canberra ACT 2601

Via email: FedRedistribution-NT@aec.gov.au

Friday, 14 June 2024

Dear Committee,

Northern Territory federal redistribution

The Country Liberal Party (“CLP”) has prepared the following submission relating to the redistribution of federal electoral divisions for the House of Representatives in the Northern Territory (“NT”).

Background

In crafting this submission, the CLP has paid due consideration to the requirements outlined in Section 66 of the Commonwealth Electoral Act, namely:

“(3) In making the proposed redistribution, the Redistribution Committee:

- a) shall, as far as practicable, endeavour to ensure that, if the State were redistributed in accordance with the proposed redistribution, the number of electors enrolled in each Electoral Division in the State would not, at the projection time determined under section 63A, be less than 96.5% or more than 103.5% of the average divisional enrolment of that State at that time; and*
- b) subject to paragraph (a), shall give due consideration, in relation to each proposed Electoral Division, to:*
 - i. community of interests within the proposed Electoral Division, including economic, social and regional interests;*
 - ii. means of communication and travel within the proposed Electoral Division;*
 - iii. the physical features and area of the proposed Electoral Division; and*
 - iv. the boundaries of existing Divisions in the State....”*

Electoral quota

The actual and projected enrolment statistics supplied by the Australian Electoral Commission (“AEC”) demonstrate that, in their current form, both NT federal electoral divisions fail to meet the requirement to be within plus and minus 3.5 per cent of the projected enrolment quota at the projection time of 4 September 2028.

Table 1 – Projected enrolment for NT & by Division

Projected enrolment for NT	166,838
Projected enrolment quota for the NT	83,419

Division	Projected enrolment		Variance to quota	
	(#)	(#)	(#)	(%)
Solomon	77,887	-5,532	-6.63	
Lingiari	88,951	+5,532	6.63	
Total	166,838			

Forecast enrolment growth

The AEC’s enrolment statistics for NT draw attention to the fact that Lingiari has a higher current enrolment base than Solomon (as at February 2022) and it is also forecast to have a higher rate of enrolment growth over the projected period to September 2028. At a regional level, the forecast enrolment growth is concentrated in Palmerston (+3,603) and Darwin Suburbs (+3,167), with 50% of the total NT enrolment growth to be derived from these Statistical Area 3 regions (“SA3s”). Darwin Suburbs SA3 is situated entirely within Solomon, while the Palmerston SA3 is split across both Solomon (80% of the SA3’s 25,271 current enrolments) & Lingiari (20% of 25,271 current enrolments).

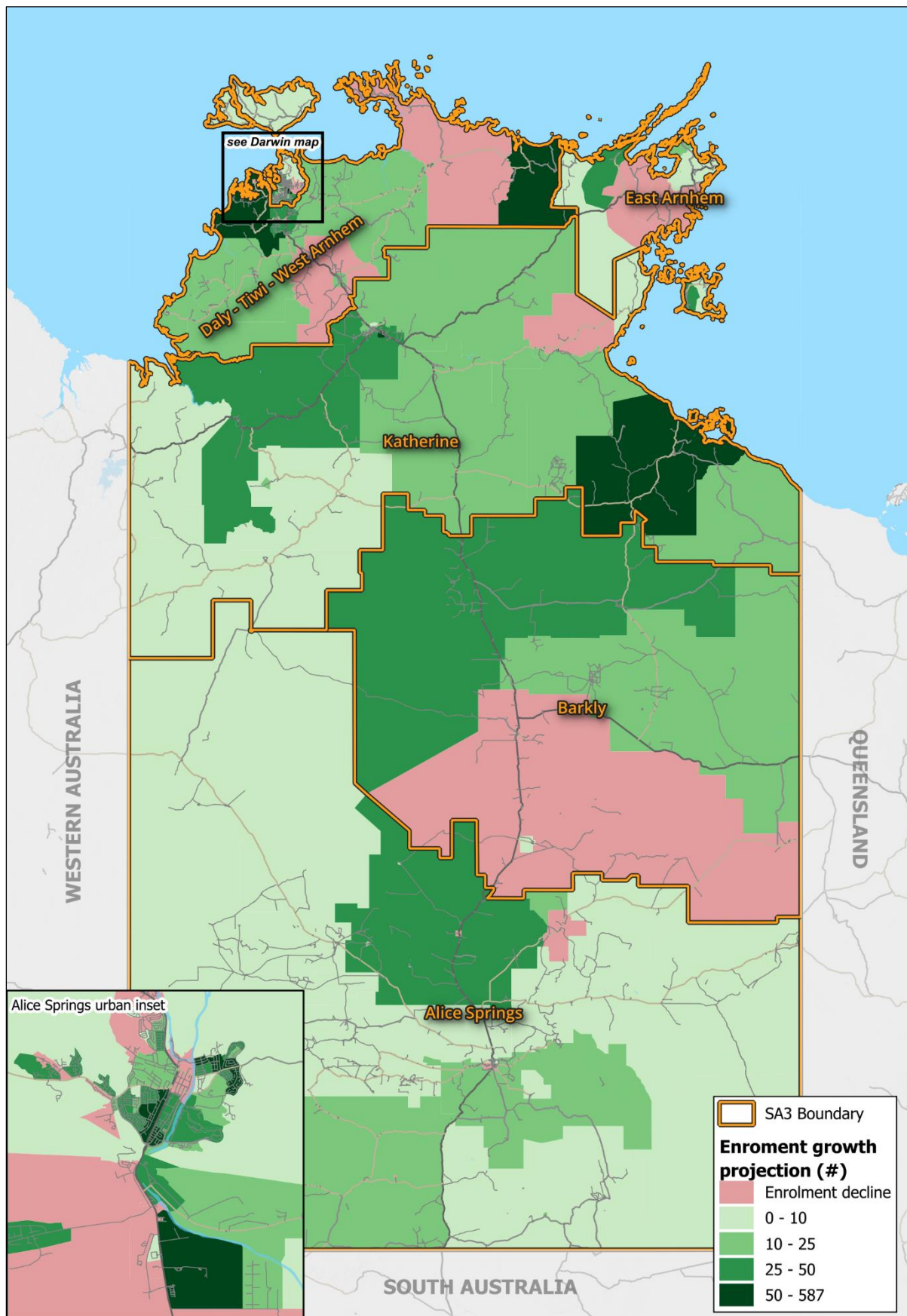
Table 2 – Enrolment statistics by Division

Division	Current	Projected	Growth	
	(#)	(#)	(#)	(%)
Solomon	72,278	77,887	+5,609	7.76
Lingiari	81,119	88,951	+7,832	9.65
Total	153,397	166,838	+13,441	8.76

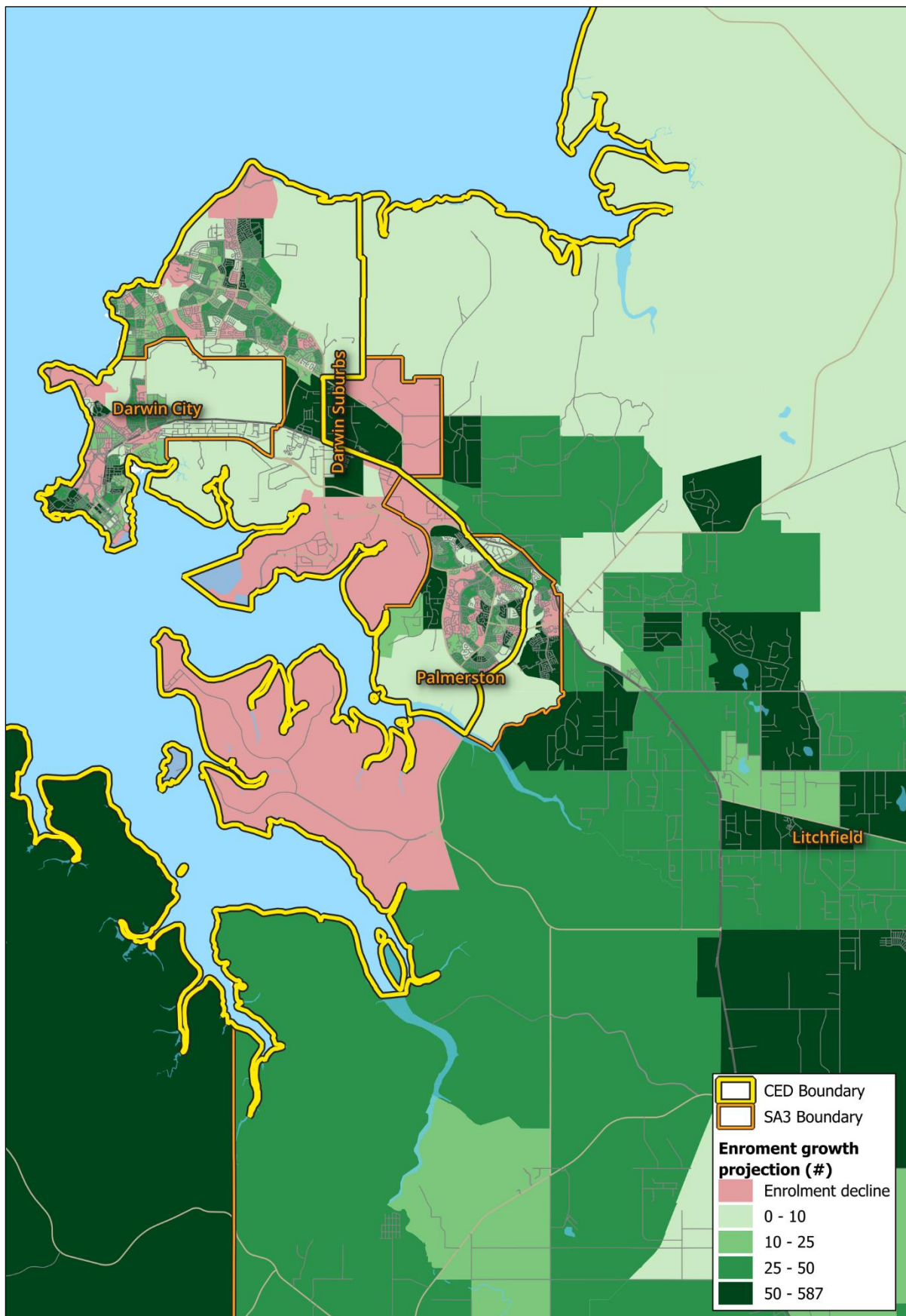
Table 3 – Enrolment statistics by SA3 – ordered by growth (#) highest to lowest

SA3	Division	Current	Projected	Growth	
		(#)	(#)	(#)	(%)
Palmerston	Solomon & Lingiari	25,271	28,874	+3,603	14.26
Darwin Suburbs	Solomon	35,805	38,972	+3,167	8.85
Litchfield	Lingiari	13,609	15,407	+1,798	13.21
Alice Springs	Lingiari	24,172	25,668	+1,496	6.19
Darwin City	Solomon	16,462	17,809	+1,347	8.18
Katherine	Lingiari	12,891	13,596	+705	5.47
Daly - Tiwi - West Arnhem	Lingiari	11,010	11,708	+698	6.34
East Arnhem	Lingiari	9,587	9,933	+346	3.61
Christmas Island	Lingiari	606	739	+133	21.95
Cocos (Keeling) Islands	Lingiari	399	487	+88	22.06
Barkly	Lingiari	3,585	3,645	+60	1.67
Total		153,397	166,838	+13,441	8.76

Map 1 – Projected enrolment – Northern Territory



Map 2 – Projected enrolment – Urban Darwin



2016 NT Redistribution

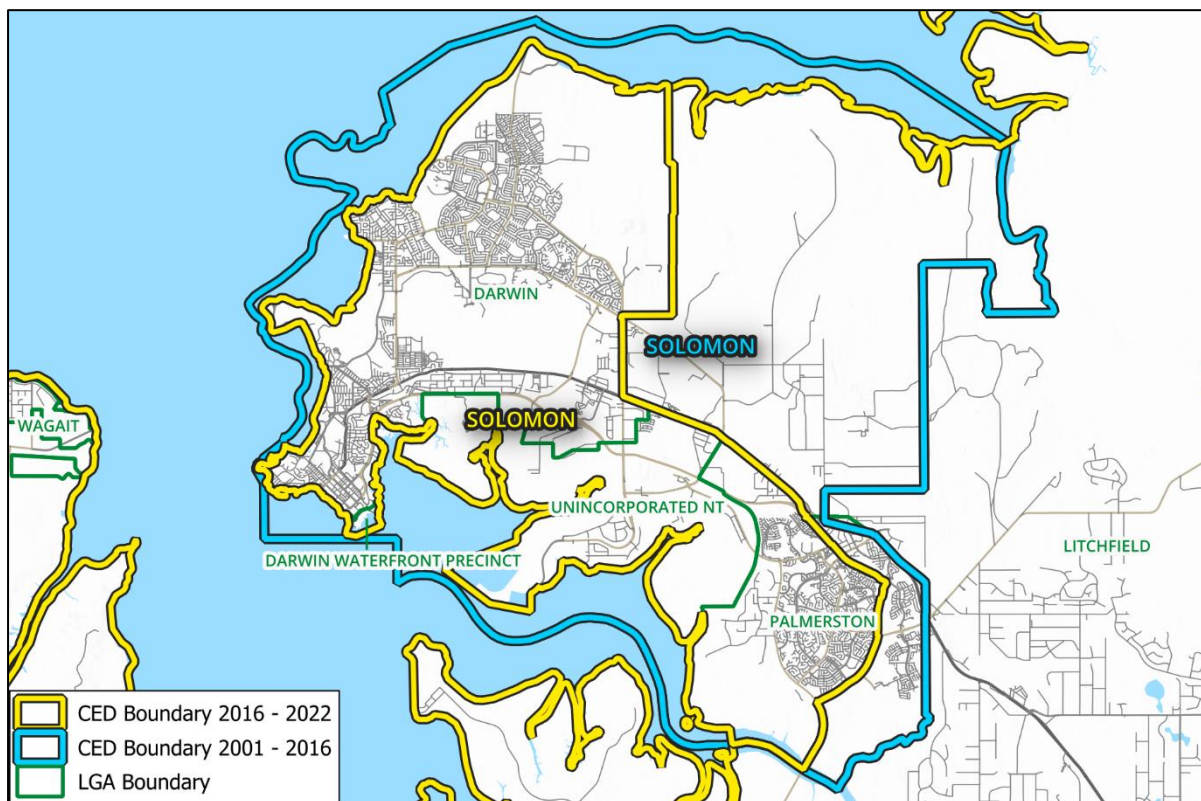
The 2016 AEC redistribution of the Northern Territory resulted in two changes based on Local Government Area (“LGA”) boundaries.

The first change resulted in the entirety of the Litchfield LGA being moved into Lingiari, requiring the transfer of the suburbs of Holtze, Knuckey Lagoon, Micket Creek and part of Shoal Bay from Solomon to the proposed Division of Lingiari.

The second change resulted in the Palmerston LGA being split across two electorates with a transfer of the suburbs of Farrar, Johnston, Mitchell, Zuccoli and part of Yarrowonga from Solomon to the proposed Division of Lingiari.

This resulted in the Palmerston LGA being split across two Divisions for the first time since its inception in 2001.

Map 3 – Historical boundaries of Solomon



In its final report dated February 2017, the augmented Electoral Commission for the Northern Territory noted that:

“the primary factor for consideration in determining electoral divisions is to ensure the two numerical requirements of the Electoral Act would be met, and retaining Palmerston Municipality in its entirety in the proposed Division of Solomon would not enable these two numerical requirements to be met.”

Palmerston LGA

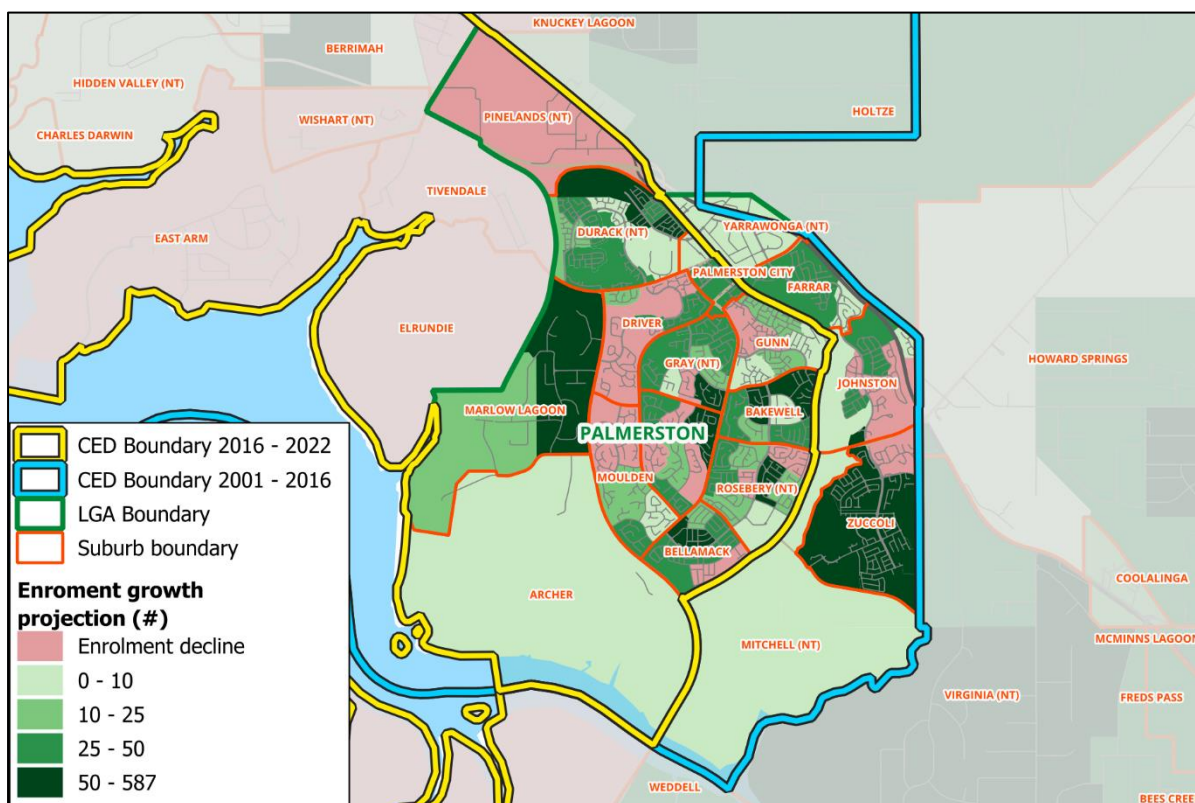
The actual and projected enrolment statistics for the suburbs contained within the Palmerston LGA are detailed below, grouped by the current electoral division that they are situated in.

This table highlights that there is significant enrolment growth forecast for the suburb of Zuccoli, which currently resides in Lingiari.

Table 4– Palmerston LGA enrolment statistics by division– ordered by growth highest to lowest

Suburb	CED	Actual	Projected	Growth
Zuccoli	Lingiari	2,693	4,934	+2,241
Johnston	Lingiari	1,272	1,381	+109
Farrar	Lingiari	1,023	1,116	+93
Yarrowonga (NT)	Lingiari	27	32	+5
Mitchell (NT)	Lingiari	0	0	0
Sub-total Lingiari		5,015	7,463	+2,448
Durack (NT)	Solomon	2,570	2,931	+361
Bakewell	Solomon	2,137	2,359	+222
Rosebery (NT)	Solomon	2,589	2,761	+172
Gray (NT)	Solomon	2,430	2,584	+154
Bellamack	Solomon	1,535	1,676	+141
Woodroffe	Solomon	2,403	2,518	+115
Marlow Lagoon	Solomon	473	548	+75
Palmerston City	Solomon	51	77	+26
Gunn	Solomon	1,743	1,754	+11
Archer	Solomon	2	3	+1
Elrundie	Solomon	0	0	0
Tivendale	Solomon	0	0	0
Pinelands (NT)	Solomon	30	18	-12
Moulden	Solomon	2,359	2,307	-52
Driver	Solomon	1,986	1,931	-55
Sub-total Solomon		20,308	21,467	+1,159

Map 4 – Palmerston LGA suburbs with enrolment statistics



Proposed alteration

The AEC is required to increase the enrolment base of Solomon to ensure that it meets the demographic requirement contained in Section 66 of the Commonwealth Electoral Act.

Based on the information contained within this letter, the CLP submits that it would be most viable to achieve this by returning the suburbs of Farrar, Johnston, Mitchell, Zuccoli and Yarrowonga to the division of Solomon and in doing so unite the Palmerston LGA within a single electoral division.

The proposed transfer would result in 5,015 current electors and 7,463 projected electors being moving from Lingiari to Solomon, bringing both electoral divisions into the required +/- 3.5% deviation from the projected enrolment quota.

Table 5– Proposed boundary alteration

Solomon	Current enrolment	Projected enrolment	Lingiari	Current enrolment	Projected enrolment
Current boundary	72,278	77,887	Current boundary	81,119	88,951
<i>Var. to quota</i>	-5.8%	-6.6%	<i>Var. to quota</i>	5.8%	6.6%
Gained from:			Distributed to:		
Lingiari	+5,015	+7,463	Solomon	-5,015	-7,463
Proposed boundary	77,293	85,350	Proposed boundary	76,104	81,488
<i>Var. to quota</i>	0.8%	2.3%	<i>Var. to quota</i>	-0.8%	-2.3%

The Palmerston LGA contains a high proportion of the NT's future enrolment growth. This growth is concentrated in the suburb of Zuccoli and the proposed alteration offers a solution whereby the anticipated growth will not compromise Solomon's adherence to the electoral quota in the short-to-medium term. Furthermore, the Palmerston LGA represents a clearly delineated community of interest with common economic, social and regional characteristics. This CLP's proposed alteration would align LGA boundaries with electoral divisions (keeping the entirety of the Litchfield LGA in Lingiari).

While this proposal has strong regard for precedent, it would not be feasible to revert the current NT electoral divisions to the 2016 boundaries. This is due to the incorporation of the part of Litchfield LGA to the north of Palmerston LGA adding a further 1,422 projected enrolments (from the suburbs of Holtze, Knuckey Lagoon, Micket Creek and Shoal Bay) and resulting in Solomon having a greater than 3.5% variance from the projected enrolment quota.

Uniting the Palmerston LGA into Solomon underscores the urban nature of Solomon, while also reinforcing the regional / remote characteristics of the Lingiari electorate, ultimately strengthening the community of interest networks across both electorates.

Alternative names

The CLP does not propose any alternative names for NT's electoral divisions.

Thank you for the opportunity to present suggestions to the proposed redistribution of federal electoral boundaries in the NT.

Please do not hesitate to contact the CLP if you should you require any further information relating to this submission.

We wish the Committee well in its deliberations.

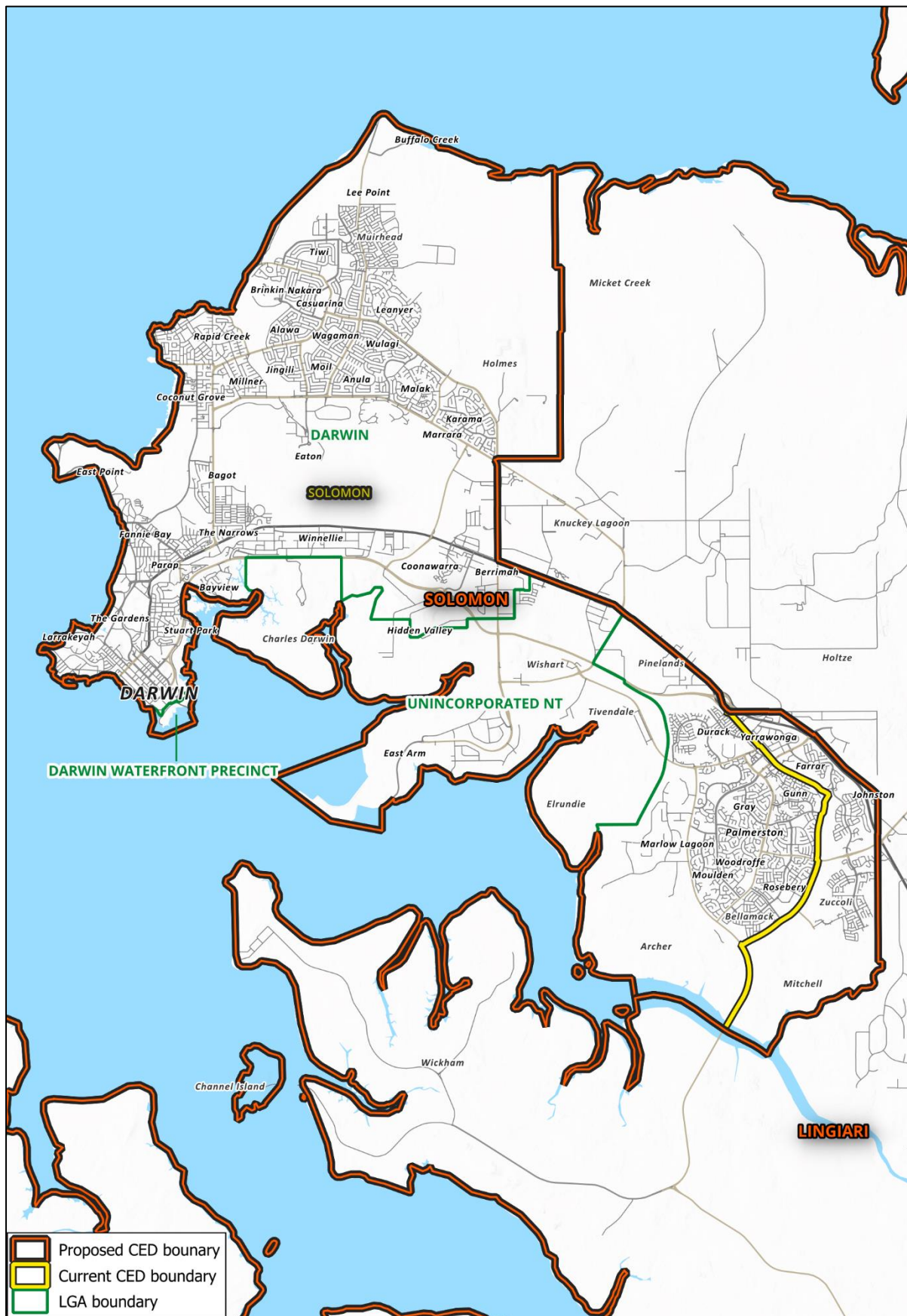
Yours sincerely,

Alyson Hannam

Territory Director
Country Liberal Party



Proposed electoral division of Solomon



Proposed electoral division of Lingiari

