



Objection 108

Leon Shinkai

4 pages

Objections to Redistribution Proposal

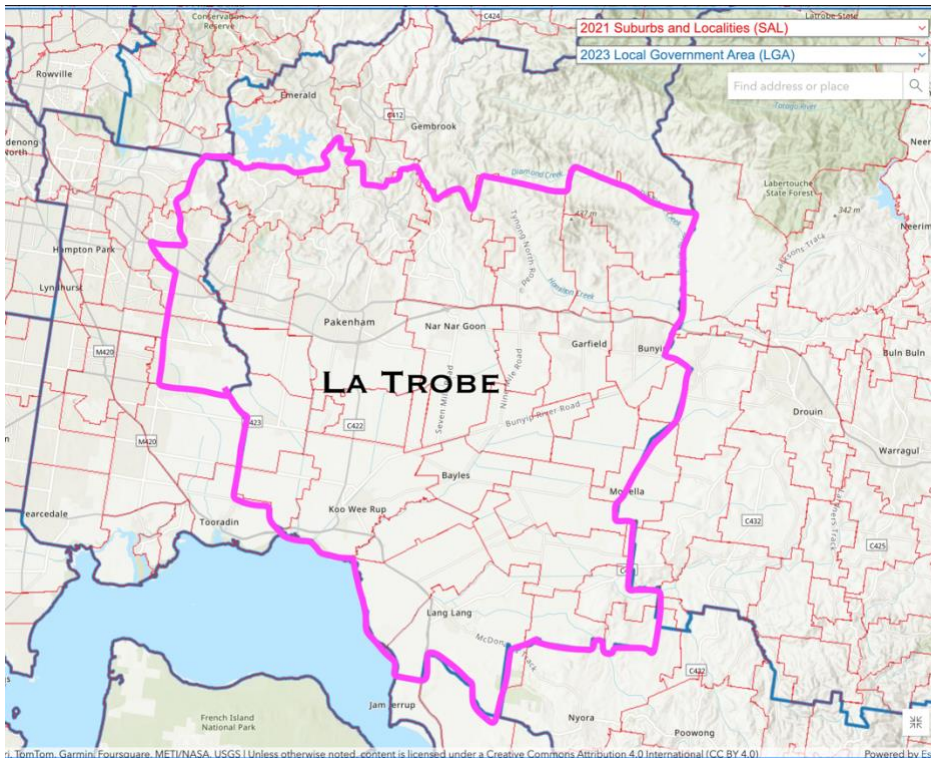
Problems

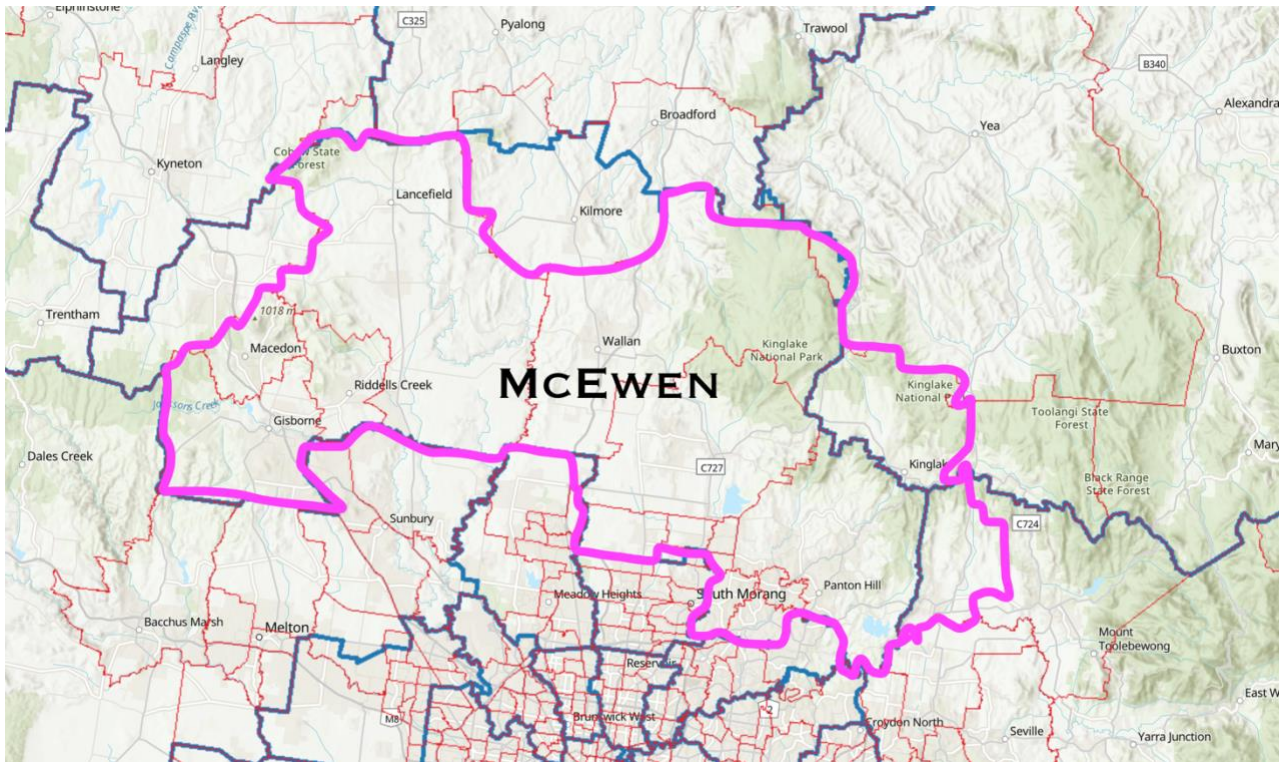
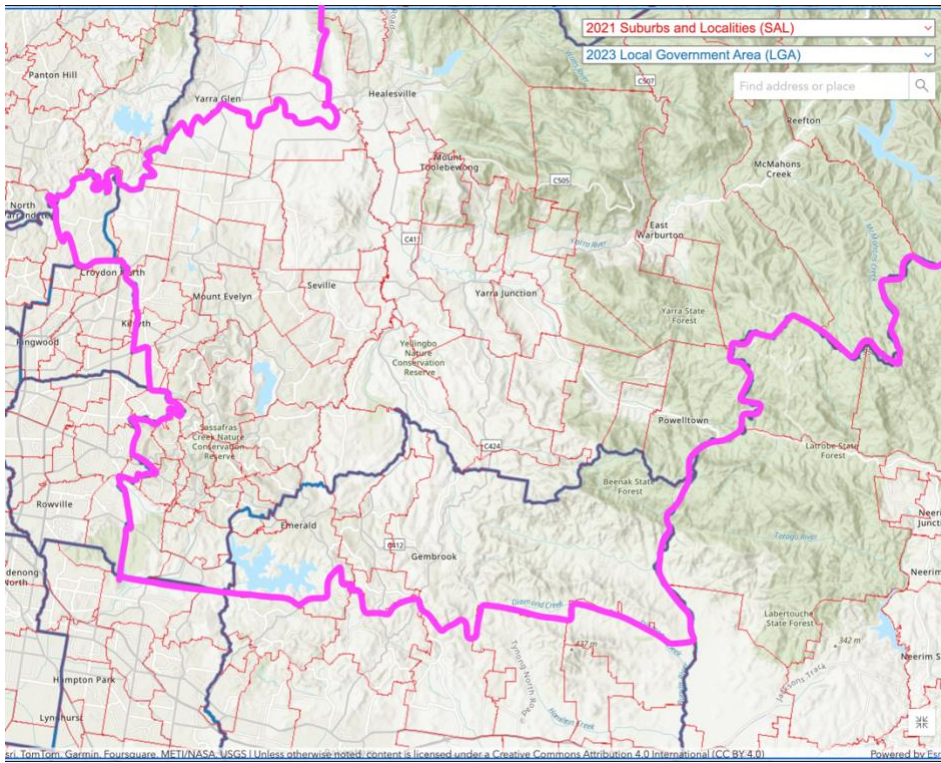
- Split of Hepburn LGA (traditionally entirely in Ballarat)
- Parts of Dandenong still in Isaacs
- Malvern East, Mount Waverley and Glen Waverley are split

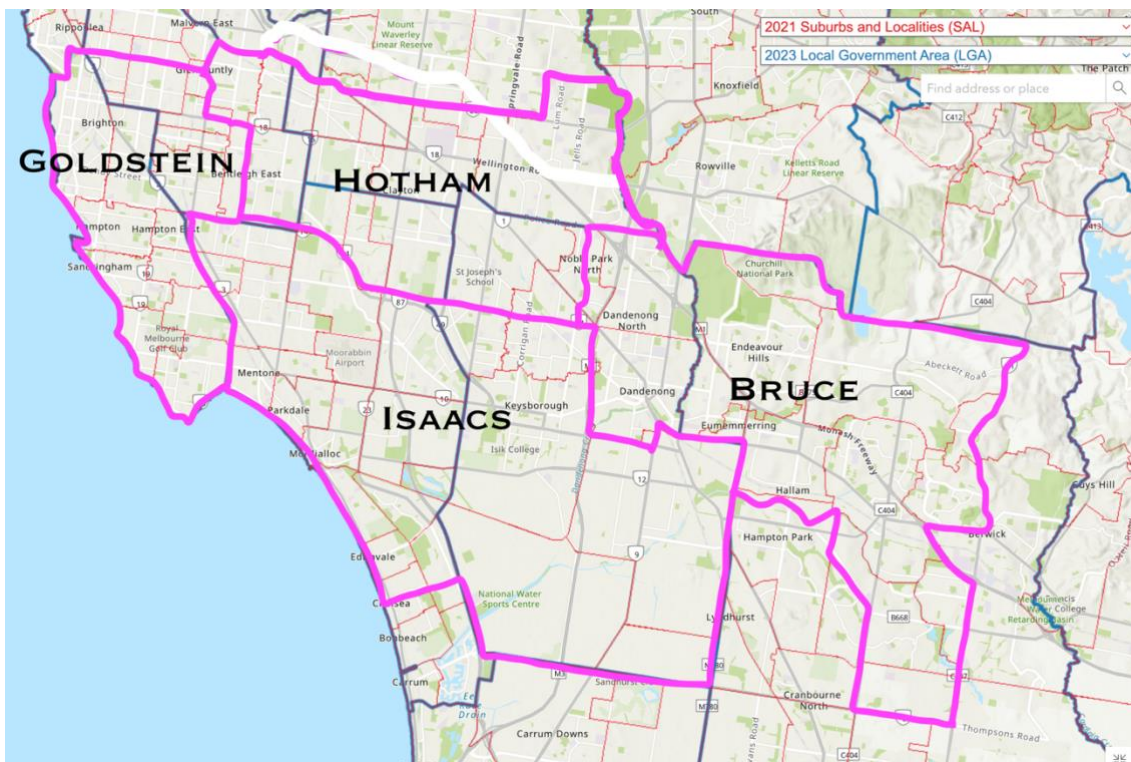
Solution

- Move Emerald, Cockatoo, Gembrook and Mount Burnett from La Trobe to Casey
- Undo the La Trobe to Bruce transfers
- Move parts of Berwick bounded by Princes Hwy, Princes Fwy and Clyde Rd from Bruce to La Trobe
- Move the rest of Dandenong from Isaacs to Bruce
- Undo the Isaacs to Goldstein transfers
- Move the parts of Bentleigh East to the West of East Boundary Rd from Hotham to Goldstein
- Move the rest of Hepburn LGA from Bendigo to Ballarat
- Undo the Nicholls to Bendigo transfers
- Move Woodend SA2 from McEwen to Bendigo
- Undo all Hawke expansions
- Move Jacana from Calwell to Maribyrnong
- Move the Maribyrnong-Wills border from Pascoe Vale Rd to the Train Line (at Pascoe Vale, Glenroy and Oak Park)
- Undo all Calwell contractions except Jacana and Kalkallo
- Move the rest of Nillumbik LGA from Casey to McEwen
- Move the rest of Euroa SA2 from Nicholls to Indi
- Move Kinglake SA2 (except Toolangi and Castella) from Indi to McEwen
- Move Yarra Glen, Dixons Creek, Steels Creek and Tarrawarra from Casey to McEwen
- Move Wheelers Hill from Chisholm to Hotham
- Realign the remainder of Chisholm-Hotham border to Ferntree Gully Rd

Maps (of some electorates)







The Resulting Numbers

New	Actual	Projected	Actual	Projected	Permissibility
Lalor	106145	131447	-9.20%	3.31%	TRUE
Gellibrand	113796	127547	-2.65%	0.24%	TRUE
Fraser	121865	129206	4.25%	1.55%	TRUE
Maribyrnong	122607	129100	4.89%	1.46%	TRUE
Gorton	118708	129465	1.55%	1.75%	TRUE
Hawke	111225	128336	-4.85%	0.86%	TRUE
Corio	120410	124168	3.01%	-2.41%	TRUE
Corangamite	106695	127797	-8.72%	0.44%	TRUE
Ballarat	112598	123846	-3.68%	-2.67%	TRUE
Bendigo	119343	127397	2.10%	0.12%	TRUE
Wannon	120813	123757	3.35%	-2.74%	TRUE
Mallee	121563	125051	3.99%	-1.72%	TRUE
Nicholls	121429	127706	3.88%	0.37%	TRUE
Indi	116934	123330	0.03%	-3.07%	TRUE
McEwen	106512	129441	-8.88%	1.73%	TRUE
Calwell	110408	131253	-5.55%	3.16%	TRUE
Scullin	112404	124158	-3.84%	-2.42%	TRUE
Wills	119088	128527	1.88%	1.01%	TRUE
Cooper	115881	124817	-0.87%	-1.90%	TRUE
Jagajaga	118529	123151	1.40%	-3.21%	TRUE
Melbourne	113439	126519	-2.96%	-0.57%	TRUE
Macnamara	113403	122946	-2.99%	-3.37%	TRUE
Kooyong	122936	130949	5.17%	2.92%	TRUE
Chisholm	116830	126748	-0.05%	-0.39%	TRUE
Menzies	120713	128860	3.27%	1.27%	TRUE
Deakin	124392	130314	6.41%	2.42%	TRUE
Aston	121246	124051	3.72%	-2.50%	TRUE
Casey	124613	127940	6.60%	0.55%	TRUE
Goldstein	117438	125819	0.47%	-1.12%	TRUE
Hotham	119725	130195	2.42%	2.32%	TRUE
Isaacs	118899	125673	1.72%	-1.23%	TRUE
Dunkley	121348	127015	3.81%	-0.18%	TRUE
Flinders	124111	128659	6.17%	1.12%	TRUE
Bruce	124174	130462	6.23%	2.53%	TRUE

Holt	106399	127222	-8.98%	-0.01%	TRUE
La Trobe	105297	131460	-9.92%	3.32%	TRUE
Monash	113398	127031	-2.99%	-0.16%	TRUE
Gippsland	116666	123685	-0.20%	-2.79%	TRUE

Other possible suggestions

The committee may wish to explore an alternative way of drawing Menzies, which involves expanding it towards Deepdene, Balwyn and Balwyn North instead of primarily expanding it to Whitehorse LGA. This will keep both Menzies and Chisholm as seats that unites significant portions of the Chinese community but now unite similar political interests (Manningham and Balwyn are usually conservative areas while Box Hill is marginal like Monash LGA) which helps make representation an easier job. I note that a Menzies composed of Manningham LGA, Mont Albert North, Box Hill North, Deepdene, Balwyn and Balwyn North would place the seat in the permissible range.