



2009 COMMONWEALTH OF AUSTRALIA



Commonwealth Electoral Act 1918
STATE OF NEW SOUTH WALES

Map of the
FEDERAL ELECTORAL DIVISION OF

HUNTER

Names and Boundaries of Electoral Divisions **HUNTER**

Names and Boundaries of Local Government Areas **DUBBO**

Map Number NSW22/2009

Scale 1:300,000
0 2 4 6 8 10 20 30 40 Kilometres

LAMBERTS CONIC CONFORMAL PROJECTION WITH STANDARD PARALLELS 29.5°S AND 35.5°S

PARKES

NEW ENGLAND

TAMWORTH REGIONAL

WALCHA

LIVERPOOL PLAINS

WARRUMBUNGLE

UPPER HUNTER

LYNE

PARKES

MID-WESTERN REGIONAL

MUSWELLBROOK

PATERSON

DUNGOG

SINGLETON

PATERSON

GREAT LAKES

NEWCASTLE

PORT STEPHENS

NEWCASTLE

SOUTH PACIFIC OCEAN

CHARLTON

ROBERTSON

DOBELL

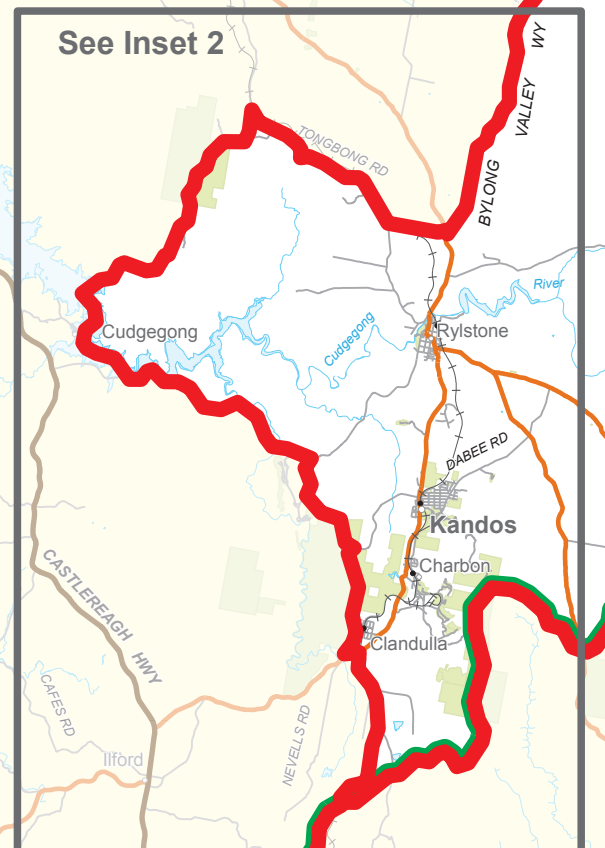
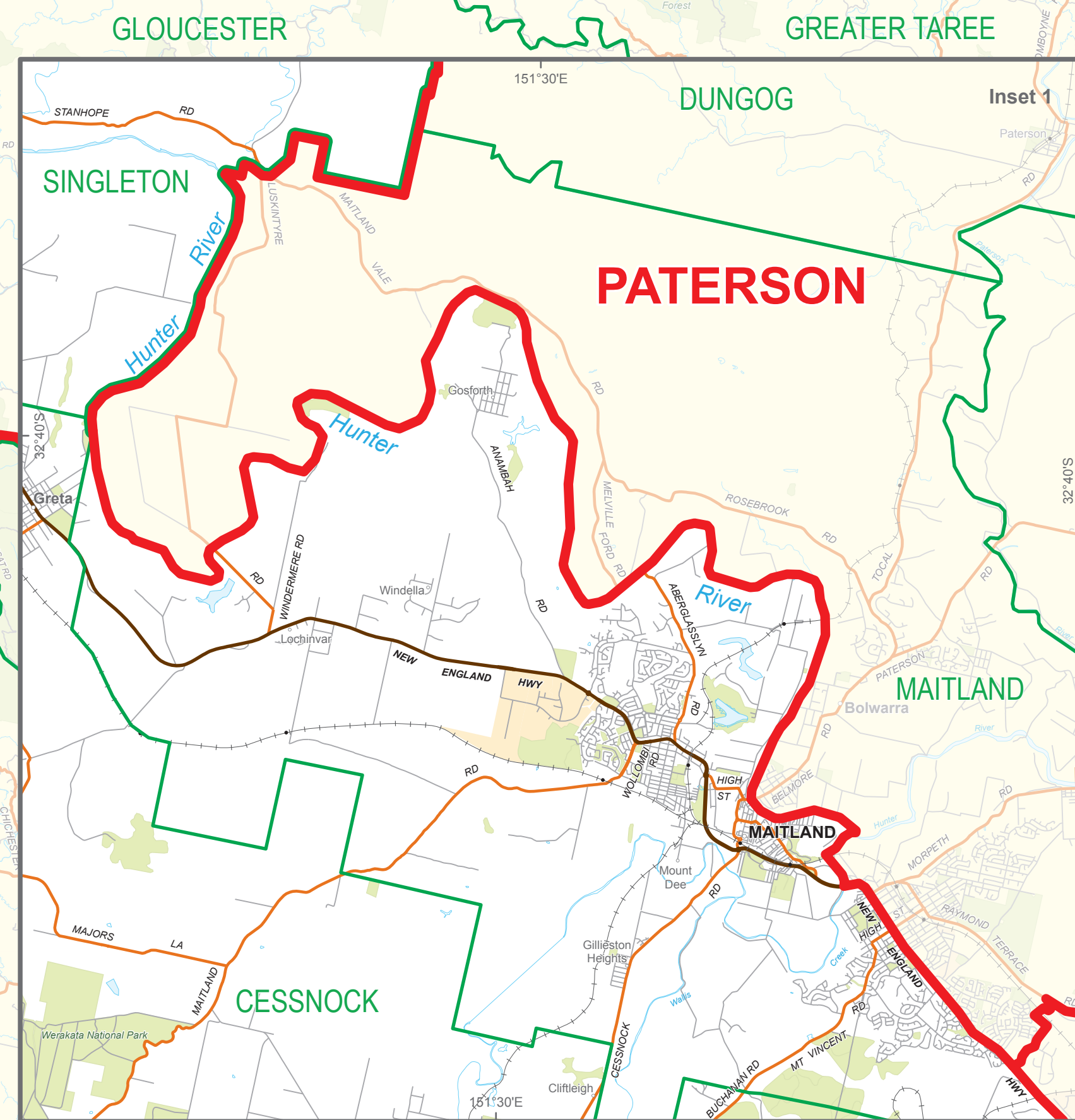
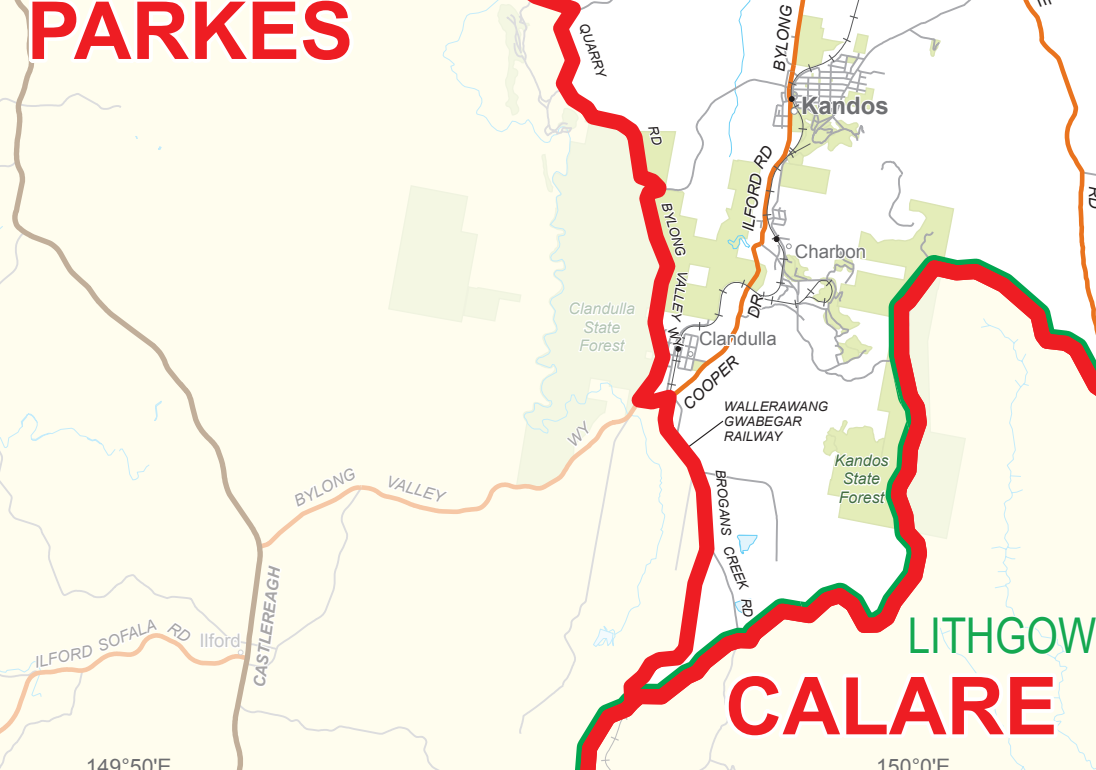
MACQUARIE

HAWKESBURY

GOSFORD

CALARE

LITHGOW



SOURCES
This map has been compiled by Spatial Vision from data supplied by the Australian Electoral Commission, Geoscience Australia, Department of the Environment, Water, Heritage and the Arts and Pitney Bowes Business Insight. StreetPro Australia is used on this map. Based on data provided under licence from PSMA Australia Ltd.

DISCLAIMER
This map has been compiled from various sources and the publisher and/or contributors accept no responsibility for any injury, loss or damage arising from its use or errors or omissions therein. While all care is taken to ensure a high degree of accuracy users are invited to notify of any map discrepancies.

© Pitney Bowes Insight 2009.
© Commonwealth of Australia (2009).

This work is copyright. Apart from any use as permitted under the Copyright Act 1968, no part may be reproduced by any process without prior written permission from the Commonwealth. Requests and inquiries concerning reproduction and rights should be addressed to the Commonwealth Copyright Administration, Attorney General's Department, National Circuit, Barton ACT 2600 or posted at <http://www.ag.gov.au/cca>.