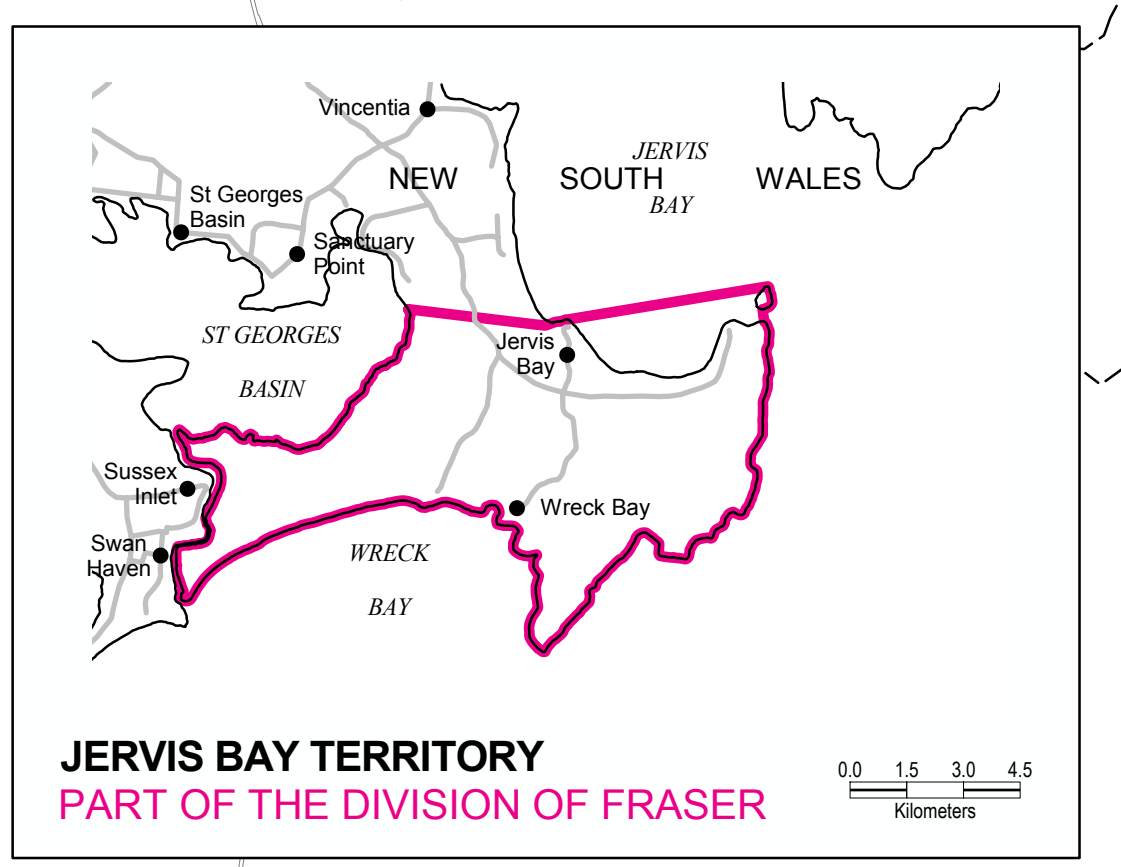
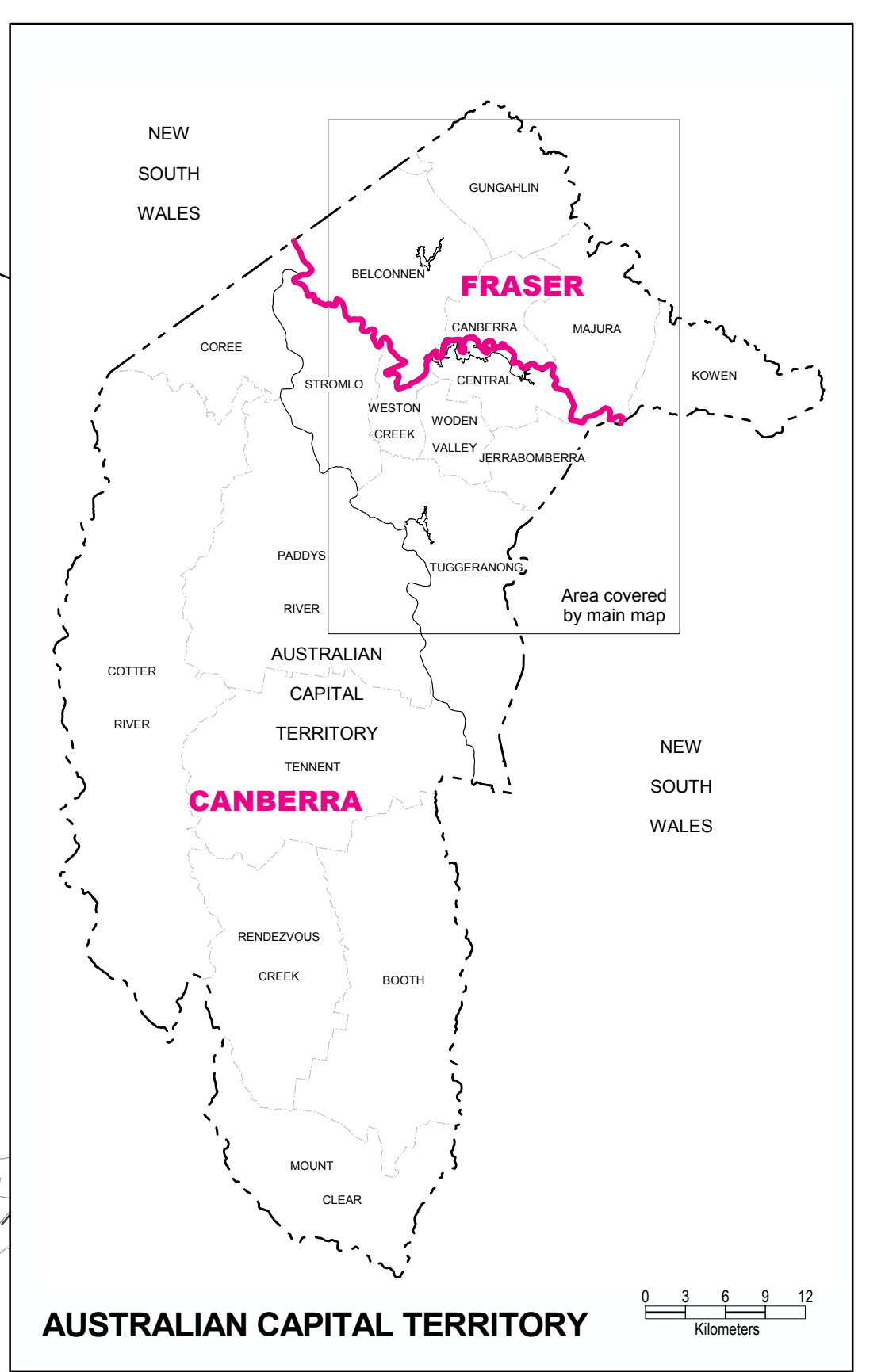
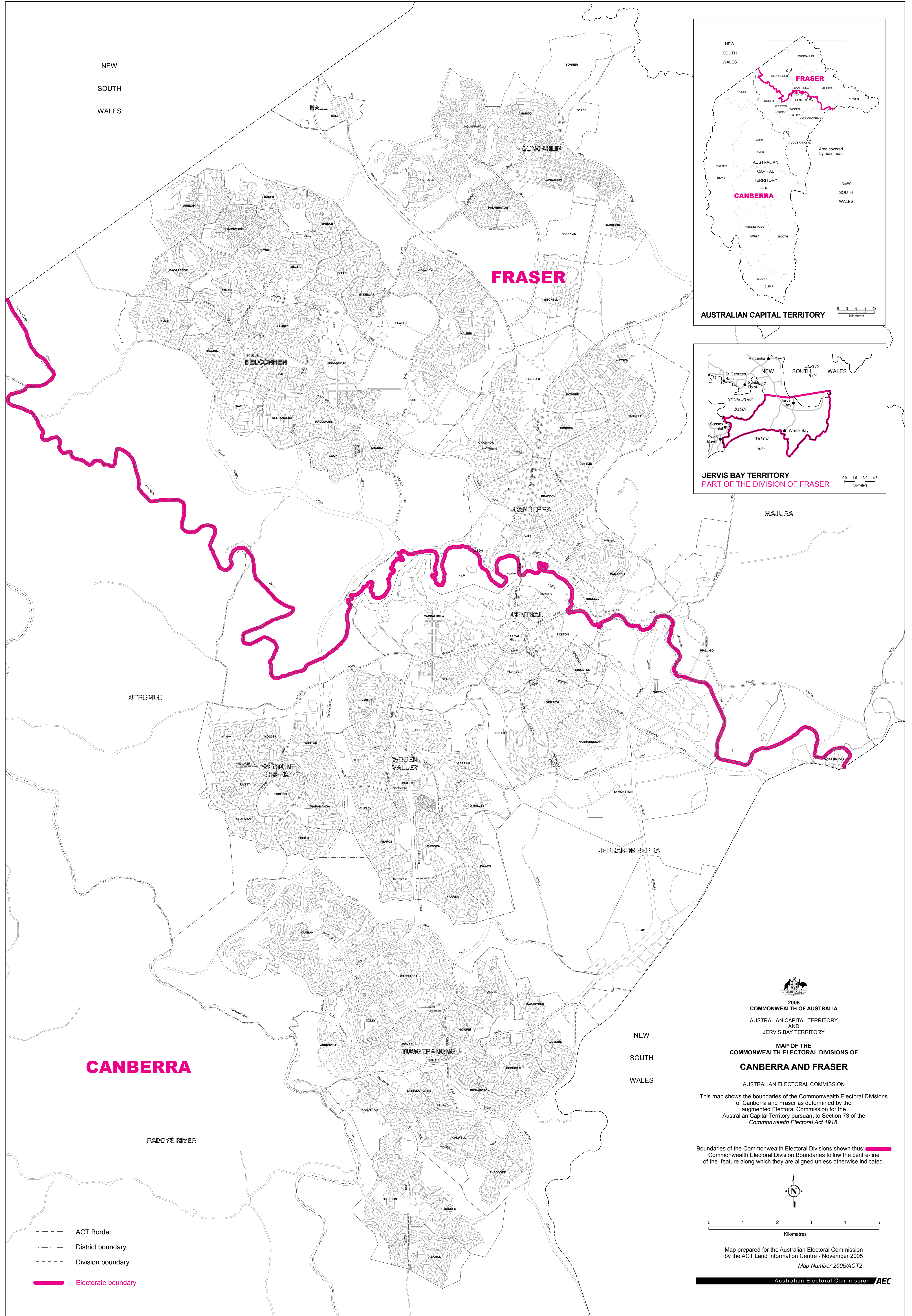


NEW
SOUTH
WALES



CANBERRA

- ACT Border
- - - District boundary
- - - Division boundary
- █ Electorate boundary

NEW
SOUTH
WALES



2005
COMMONWEALTH OF AUSTRALIA
AUSTRALIAN CAPITAL TERRITORY
AND
JERVIS BAY TERRITORY
**MAP OF THE
COMMONWEALTH ELECTORAL DIVISIONS OF
CANBERRA AND FRASER**

AUSTRALIAN ELECTORAL COMMISSION
This map shows the boundaries of the Commonwealth Electoral Divisions of Canberra and Fraser as determined by the augmented Electoral Commission for the Australian Capital Territory pursuant to Section 73 of the Commonwealth Electoral Act 1918.

Boundaries of the Commonwealth Electoral Divisions shown thus: █
Commonwealth Electoral Division Boundaries follow the centre-line of the feature along which they are aligned unless otherwise indicated.



Map prepared for the Australian Electoral Commission by the ACT Land Information Centre - November 2005
Map Number 2005/ACT2