



# Suggestion 26

Dean Ashley

94 pages

# WESTERN AUSTRALIA ELECTORAL REDISTRIBUTION 2020

Suggestions by Dean Ashley

October 2020

# CONTENTS

---

Contents .....	1
1 Overview .....	2
1.1 Key Proposals .....	2
1.2 Division Names .....	3
1.3 Overview Images .....	5
2 Suggested Divisions .....	11
2.1 Arrangement .....	11
2.2 Notes regarding Maps and Split SA1s .....	11
2.3 Division of Durack .....	11
2.4 Division of O'Connor .....	13
2.5 Division of Forrest .....	16
2.6 Division of Canning .....	19
2.7 Division of Brand .....	22
2.8 Division of Fremantle .....	24
2.9 Division of Tangney .....	26
2.10 Division of Swan .....	27
2.11 Division of Burt .....	29
2.12 Division of Curtin .....	31
2.13 Division of Perth .....	33
2.14 Division of Moore .....	34
2.15 Division of Pearce .....	35
2.16 Division of Stirling .....	38
2.17 Division of Hasluck .....	39
2.18 Former Division of Cowan .....	42
3 Net Transfers by Division .....	44
3.1 Transfers of Actual Enrolment .....	44
3.2 Transfers of Projected Enrolment .....	45
Appendix A – List of Transferred SA1s .....	46

# 1 OVERVIEW

---

## 1.1 KEY PROPOSALS

This section summarises the broad outline of the suggested redistribution outcomes. More detail is then provided in the summary of each suggested division.

### 1.1.1 Re-populating the rural divisions

With low growth and the increased quota due to the state's reduced division entitlement, the two state-spanning divisions of Durack and O'Connor are well below quota, while the third fully non-metro division of Forrest is within tolerances.

Community of interest considerations suggest that the first place to look for additional electors for the under-quota divisions should be the remaining non-metro LGAs that are in hybrid metro-rural divisions such as Pearce and Canning. This provides an easy resolution for the Durack shortfall, by transferring from Pearce the "Avon arc" of LGAs running from Gingin to Beverley.

A solution for O'Connor is less obvious, but it is suggested that it needs to involve much of non-Mandurah elements of the Peel region being transferred from Canning to one of the fully rural divisions. While transferring this area to O'Connor would allow the existing Division of Forrest to remain largely intact, it is suggested that extending O'Connor into yet another region should be avoided in favour of a solution that adds to the portion of the South-West that is in O'Connor. The Division of Forrest would then extend up the South Western Hwy into the Peel region.

### 1.1.2 North-South balance of remaining divisions

After the transfers to rural divisions, the task is to reconfigure the remains of thirteen divisions into twelve. With Pearce having shed its outer arc and the Swan River providing a natural boundary, an examination of the remaining elector balance suggests a configuration with six "northern" divisions created from the existing divisions of Curtin, Perth, Stirling, Moore, Cowan, the remains of Pearce and the northern part of Hasluck, while six "southern" divisions would be created from Canning, Brand, Fremantle, Tangney, Swan, Burt and the southern part of Hasluck.

A partition of Hasluck largely along the Helena River provides an almost perfect division of electors between the two six-division areas and a strong geographical boundary that is also an LGA boundary.

### 1.1.3 Re-configuration of the south metro divisions (including Canning)

Adding the rural parts of the Peel region to Forrest leaves the already awkward Division of Canning (extending from Mandurah to Pickering Brook) as a "division in two parts". It would be possible to keep Mandurah connected to the northern part of the division by adding electors from the southern part of the Rockingham LGA

(currently in Brand) but there is a strong case for electors in the Armadale and Kalamunda LGAs to be in more Perth-oriented divisions.

The suggested solution is for Canning to add a larger part of the Rockingham LGA to become a compact coastal division, with cascading changes broadly through Brand, Fremantle, Tangney and Burt, with the latter division then taking in both the southern part of Hasluck and the northern end of existing Canning. This approach transfers more electors and radically re-draws some divisions (see discussion of names in section 1.2), but creates a series of geographically compact divisions.

#### 1.1.4 Re-configuration of the north metro divisions

The starting point for the north metro (after rural transfers and the north-south divide discussed above) is five below-tolerance divisions (Curtin, Perth, Stirling, Moore and Cowan), a within-tolerance rump Pearce (after the rural transfers) and the northern part of Hasluck.

The suggested alignment is for Curtin to gain electors from the Divisions of Perth and Stirling, while Perth extends north into Yokine and Dianella (currently in Stirling). The Division of Moore is easily brought within tolerance by adding the Greenwood-Warwick SA2 from Cowan to unite the Joondalup LGA. The Division of Stirling would then add electors from the southern part of Cowan, while the “outer arc” comprising the remainder of Cowan, rump Pearce and the northern part of Hasluck would be re-organised into two divisions with a north-west metro division based on the remainder of the Wanneroo LGA (drawing electors from Cowan and Pearce) and a north-east metro division based on the majority of the Swan and Mundaring LGAs (drawing from Pearce, Hasluck and Cowan).

## 1.2 DIVISION NAMES

The commentary above has not addressed which division is “abolished” because within the proposed reconfiguration there are several divisions that could be argued not to have a clear successor. Specifically, there are four suggested divisions that could be best described as Pearce-Cowan, Hasluck-Pearce, Burt-Hasluck-Canning and Tangney-Burt, with some also having contributions from other divisions. The latter two divisions *both* draw a plurality of projected electors from the existing division of Burt.

For the purposes of documenting the suggested divisions, the names Pearce and Hasluck have been retained for the two divisions that draw a majority and a plurality respectively of projected electors from those existing divisions. That means that Cowan is the division notionally abolished, having been split four ways between Moore, Pearce, Hasluck and Stirling.

In the south, with two re-drawn divisions having claims to be the successor to Burt, it has been assumed that the division that draws primarily from Tangney and Burt

will retain the former name, despite Tangney contributing significantly less electors than Burt.

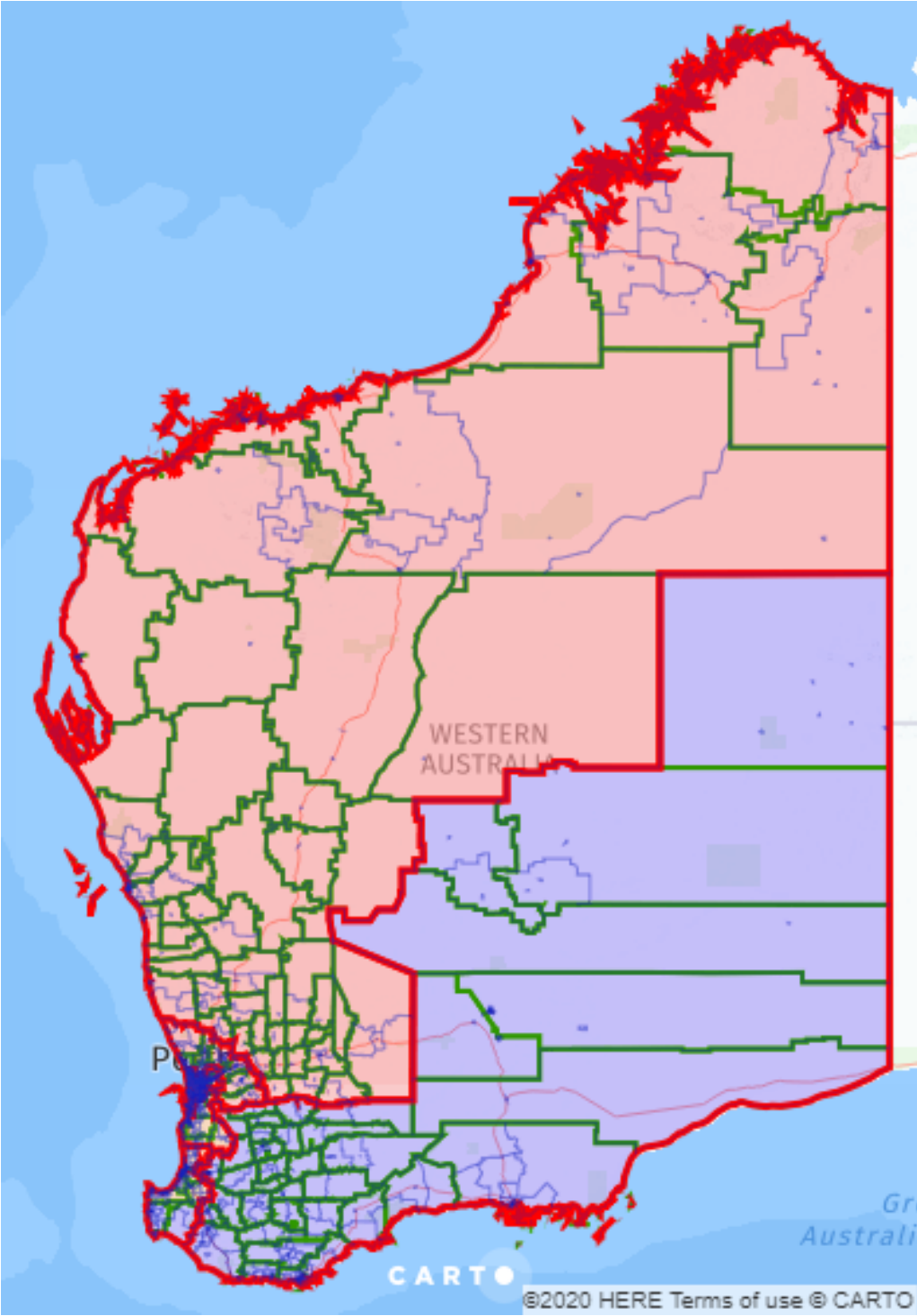
The division created from the remainder of Burt, the southern part of Hasluck, the northern end of Canning, and with a further contribution from Swan is designated as Burt, after the division that contributes a plurality of electors.

While the suggested loss of the name Cowan and the tenuous case for retaining the name Tangney are very unfortunate in the sense that they would further erode the small number of Divisions named for women, names cannot drive boundaries. Even the secondary criterion of existing boundaries (subordinated to the other criteria by section 66(3A) of the *Commonwealth Electoral Act*) should not be used to favour retaining the boundaries of one division over those of another based on the name of the Division.

It is suggested that if Cowan is abolished and/or the retention of Tangney for a division drawing more electors from Burt is deemed too confusing, strong consideration could be given to applying a new name to one or more of the radically re-drawn divisions.

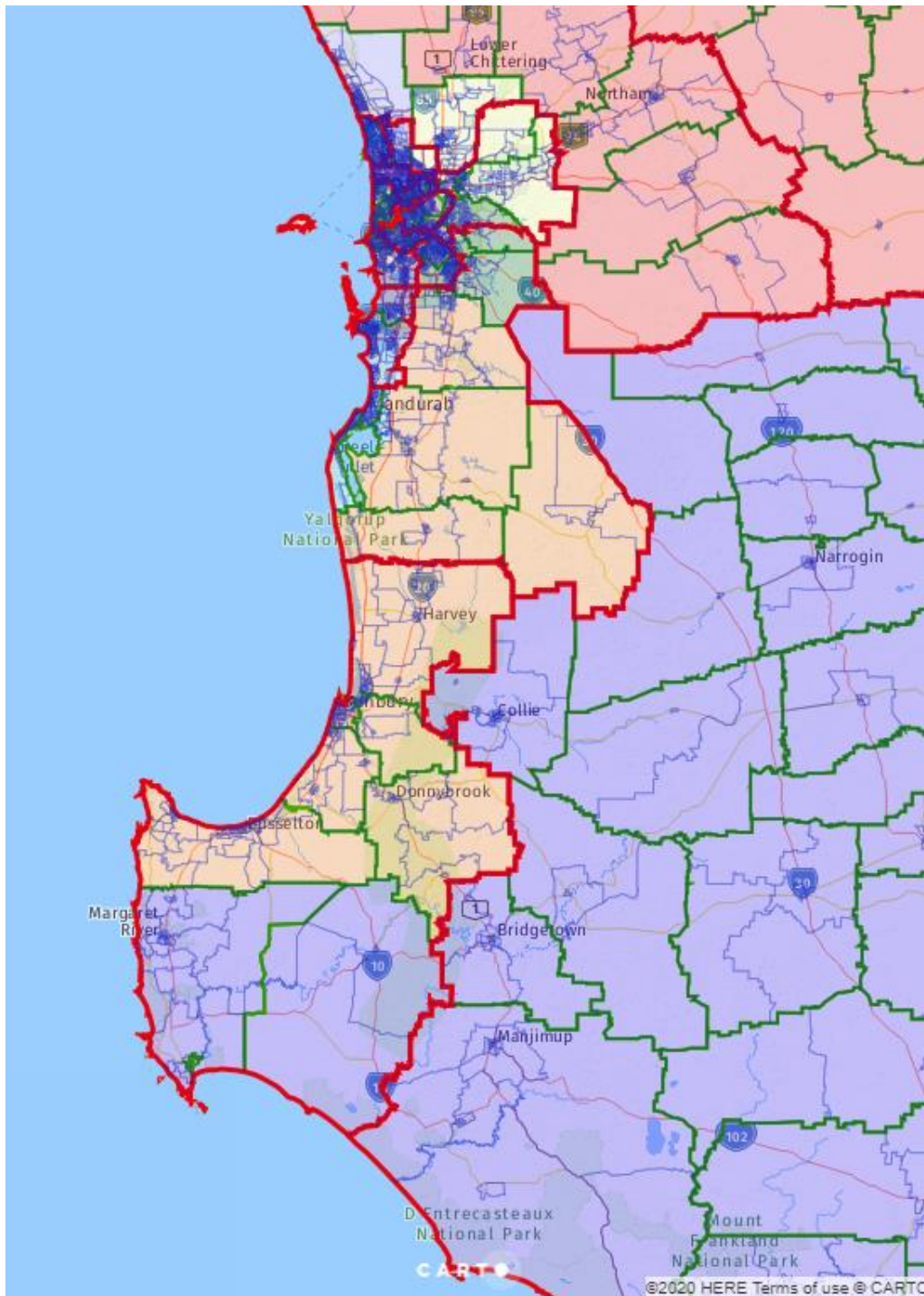
# 1.3 OVERVIEW IMAGES

Figure 1.3.1 Whole of State



 Existing Boundaries      Suggested Divisions

Figure 1.3.2 Perth and the South-West






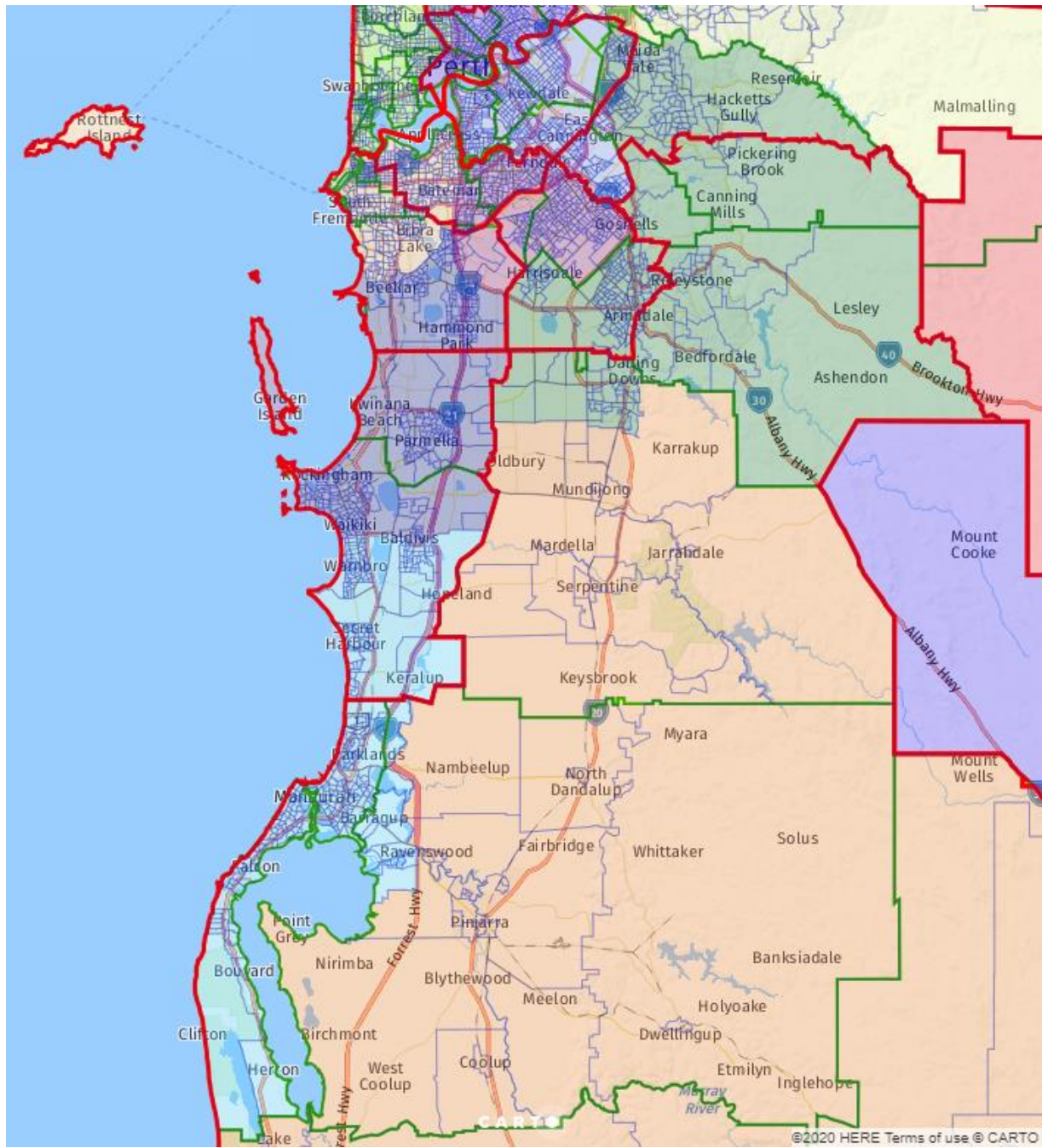
 Existing Boundaries      Suggested Divisions

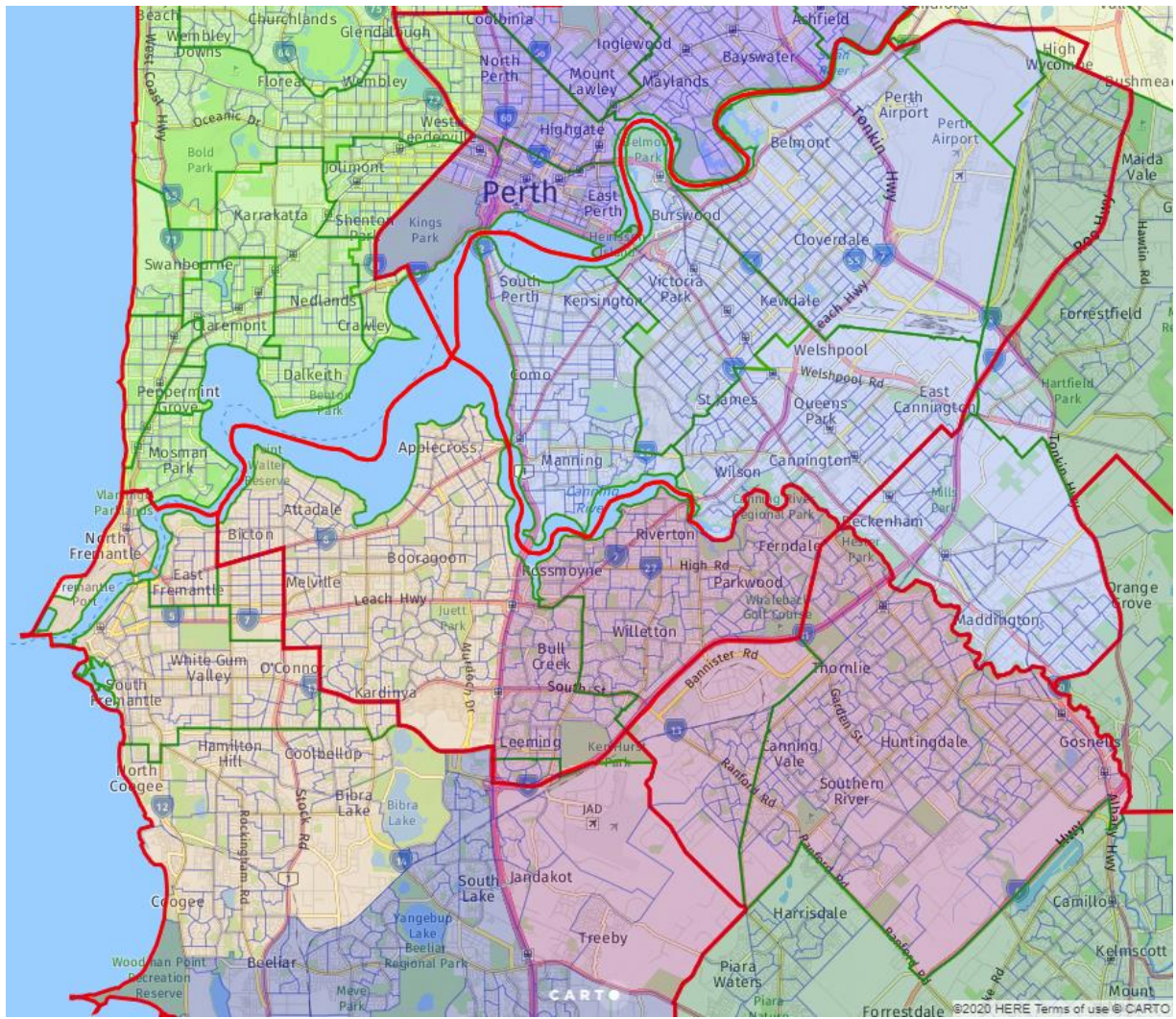


Figure 1.3.3 Metro South



Existing Boundaries    Suggested Divisions

Figure 1.3.4 Metro South (Inner)




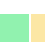
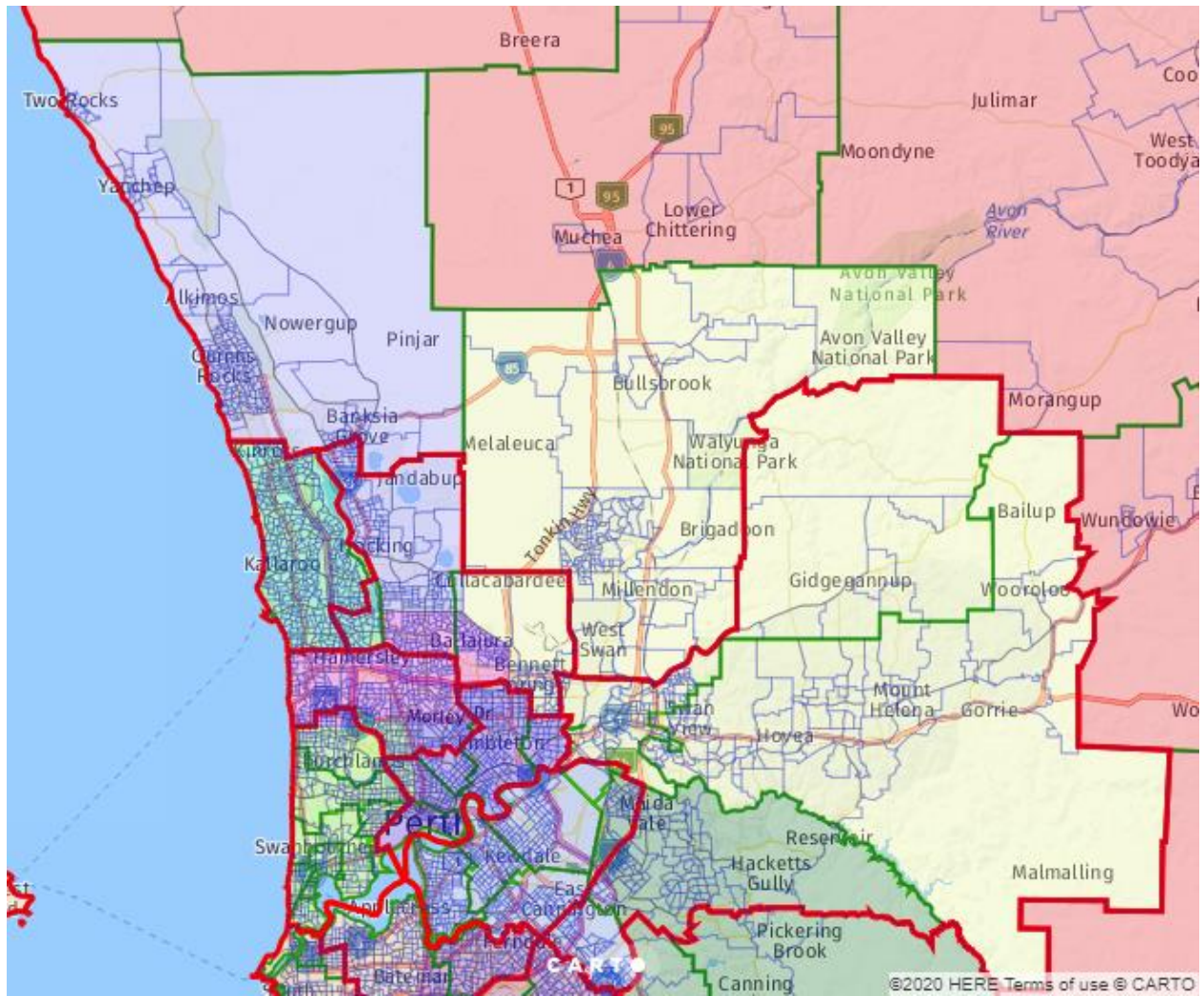
 Existing Boundaries      Suggested Divisions

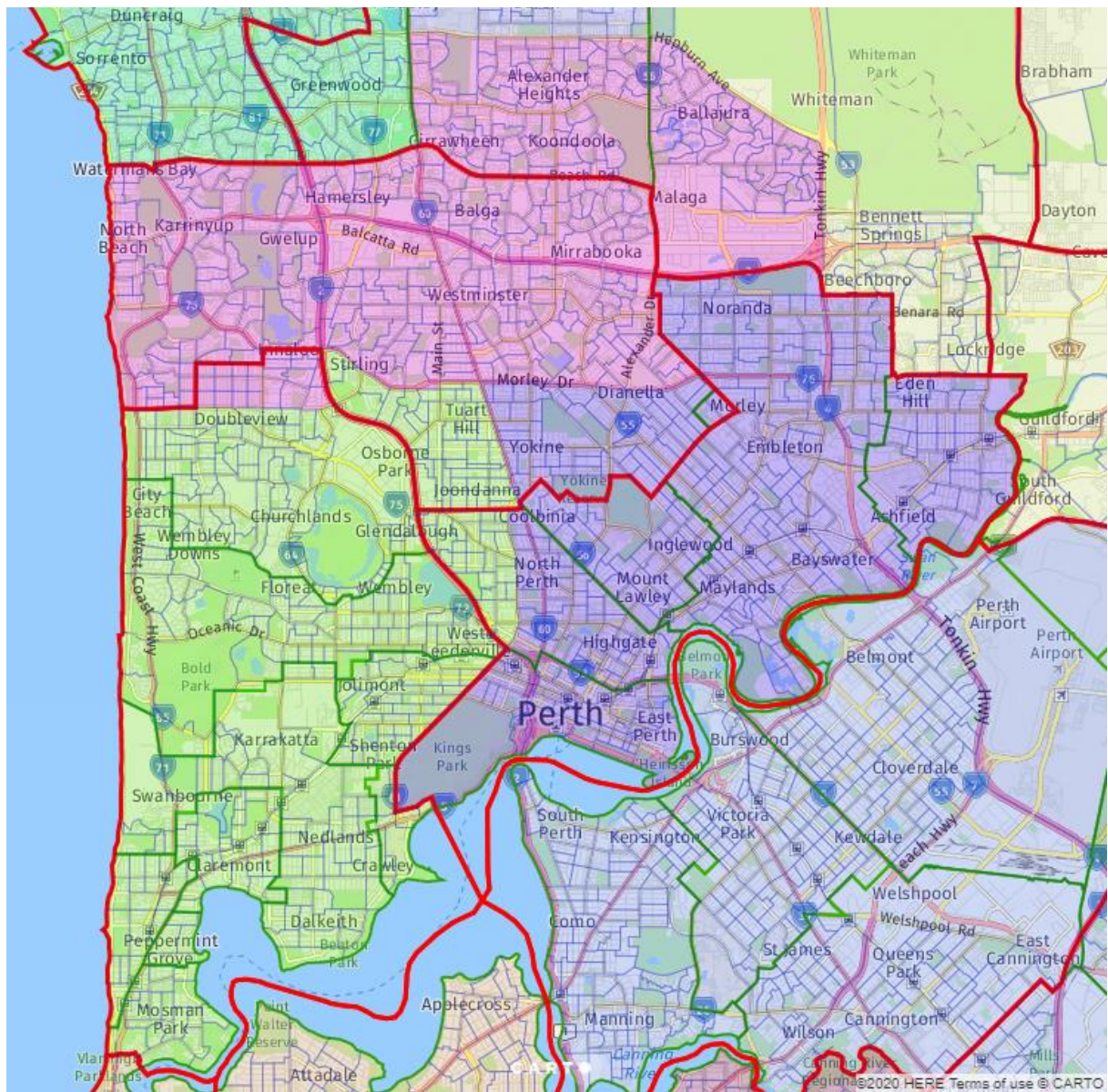


Figure 1.3.5 Metro North



Existing Boundaries    Suggested Divisions

Figure 1.3.6 Metro North (Inner)



Existing Boundaries    Suggested Divisions



## 2 SUGGESTED DIVISIONS

---

### 2.1 ARRANGEMENT

This section summarises the suggested changes to all divisions, including transfers (listed at SA2 level) and maps of the suggested new boundaries.

Divisions are listed in the approximate order in which they were settled in the formulation of these suggestions. However, the sequence is effectively a retrospective one that emerged as numerous iterations revealed the divisions whose resolution would determine the shape of the map. The commentary in relation to such divisions includes the strategic implications and alternatives considered.

### 2.2 NOTES REGARDING MAPS AND SPLIT SA1s

Maps were constructed in CARTO using SA1 boundaries from the Australian Bureau of Statistics and existing electoral boundaries from the AEC. The shading of SA1s indicates the suggested new divisions.

SA1s that straddle an existing division boundary are represented only approximately in the maps, intended to show whether the existing parts of a split SA1 remain in their existing divisions or not. While some split SA1s are re-united and the suggestions include three new splits with approximate allocations of electors (noted in the Transfers in each affected division), there are no instances where a split SA1 is proposed to remain split but along a different boundary.

### 2.3 DIVISION OF DURACK

**Opening actual enrolment:** 98,382 (12.29% below quota)

**Opening projected enrolment:** 95,524 (18.24% below quota)

**Comment:** The division is well under the quota for projected electors.

While the obvious option of adding the non-metropolitan LGAs from Pearce does add to the diversity of interests being represented by a single division, it is almost inevitable that those LGAs are added to a rural division in this redistribution and Durack does already represent a significant portion of the Wheatbelt.

An alternative was considered in which Durack would release some territory near Perth and gain Kalgoorlie and Esperance, while O'Connor would then gain everything south of Bunbury. But this would require squeezing Bunbury and Mandurah into a single division which is not possible on current enrolments.

## Suggested Transfers:

Pearce to Durack		Actual	Projected
Chittering	(whole)	3,920	4,408
Gingin - Dandaragan	(portion currently in Pearce)	3,582	3,658
Northam	(whole)	7,349	7,228
Toodyay	(whole)	3,326	3,453
York - Beverley	(balance)	4,017	4,000
<b>Pearce to Durack Total</b>		<b>22,194</b>	<b>22,747</b>

Final actual enrolment: 120,576 (7.49% above quota)

Final projected enrolment: 118,271 (1.23% above quota)

## Maps:

Figure 2.3.1 Division of Durack

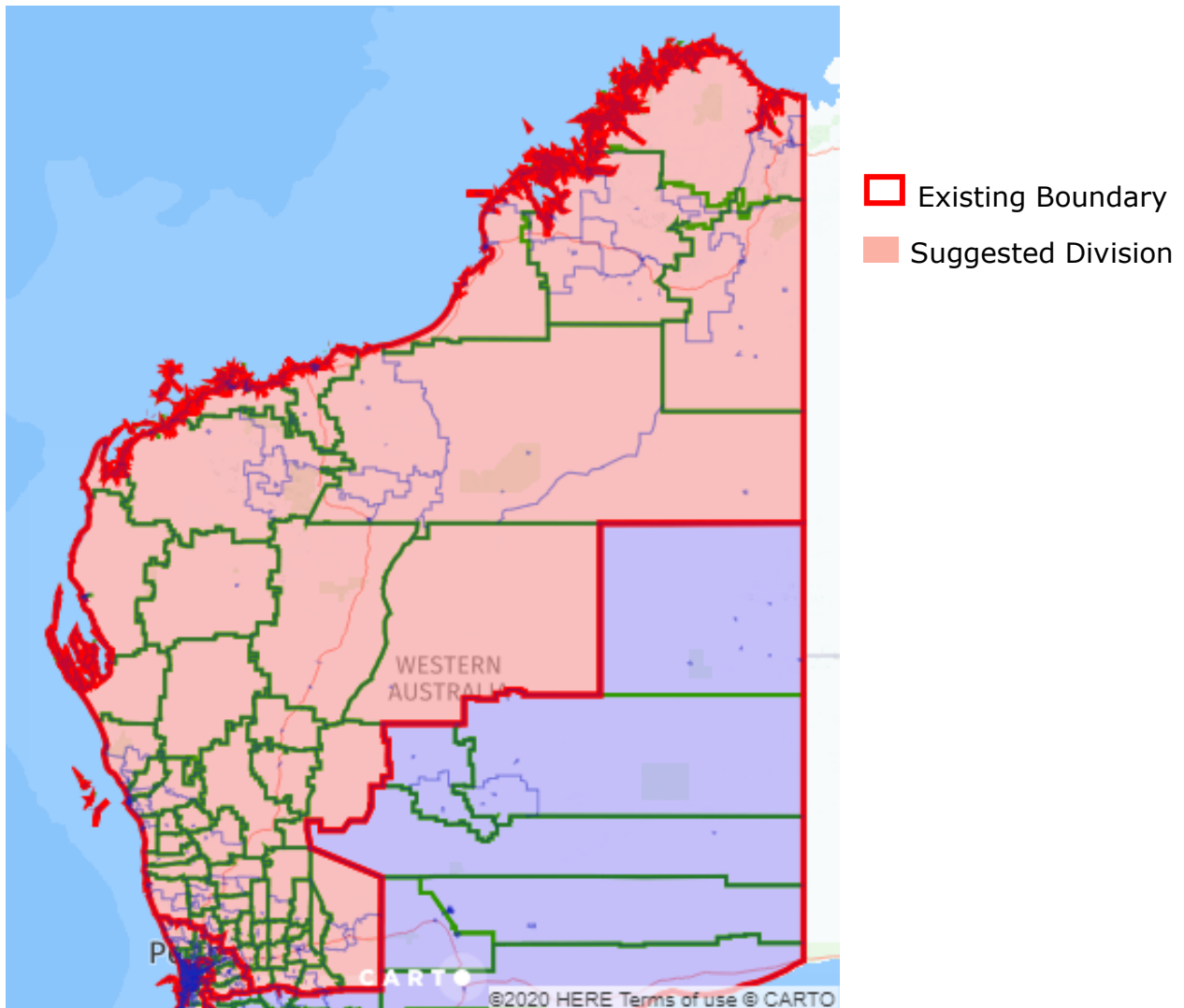
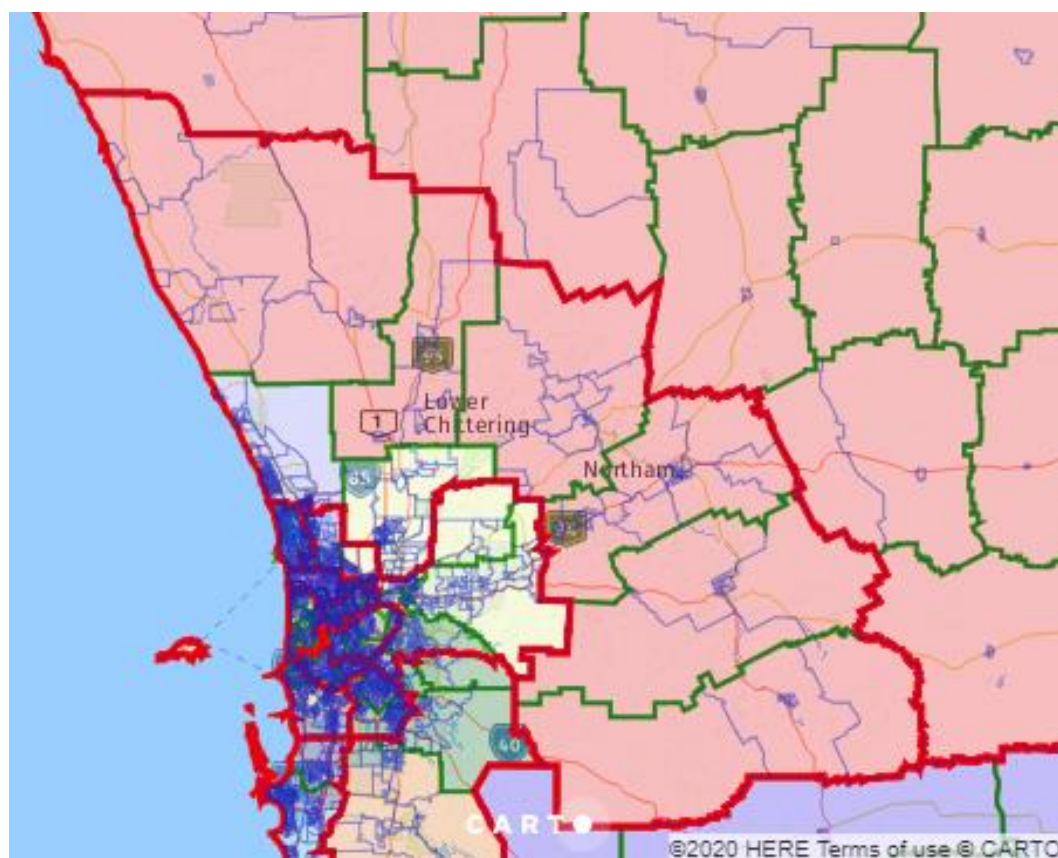


Figure 2.3.2 Division of Durack (suggested south-west portion)



Existing Boundary Suggested Division

## 2.4 DIVISION OF O'CONNOR

Opening actual enrolment: 101,985 (9.08% below quota)

Opening projected enrolment: 101,703 (12.95% below quota)

**Comment:** As discussed in section 1.1.1, the rural sections of the Peel region that are currently in the Division of Canning will need to be transferred to a fully non-metropolitan division unless such a division is to become a hybrid by taking in metropolitan areas. The real question thus becomes one of whether the area in question should be transferred to O'Connor or to Forrest.

While the former option minimises transfers and leaves the Division of Forrest intact, it is suggested that adding part of the Peel region to O'Connor would add to the challenging array of interests represented by that Division in circumstances where a viable (but not perfect) alternative is available.

If it is therefore suggested that O'Connor should add the Nannup and Augusta-Margaret River LGAs to its existing south-west portfolio, while it is the Division of Forrest that would extend along the South Western Highway into Peel.

## Suggested Transfers:

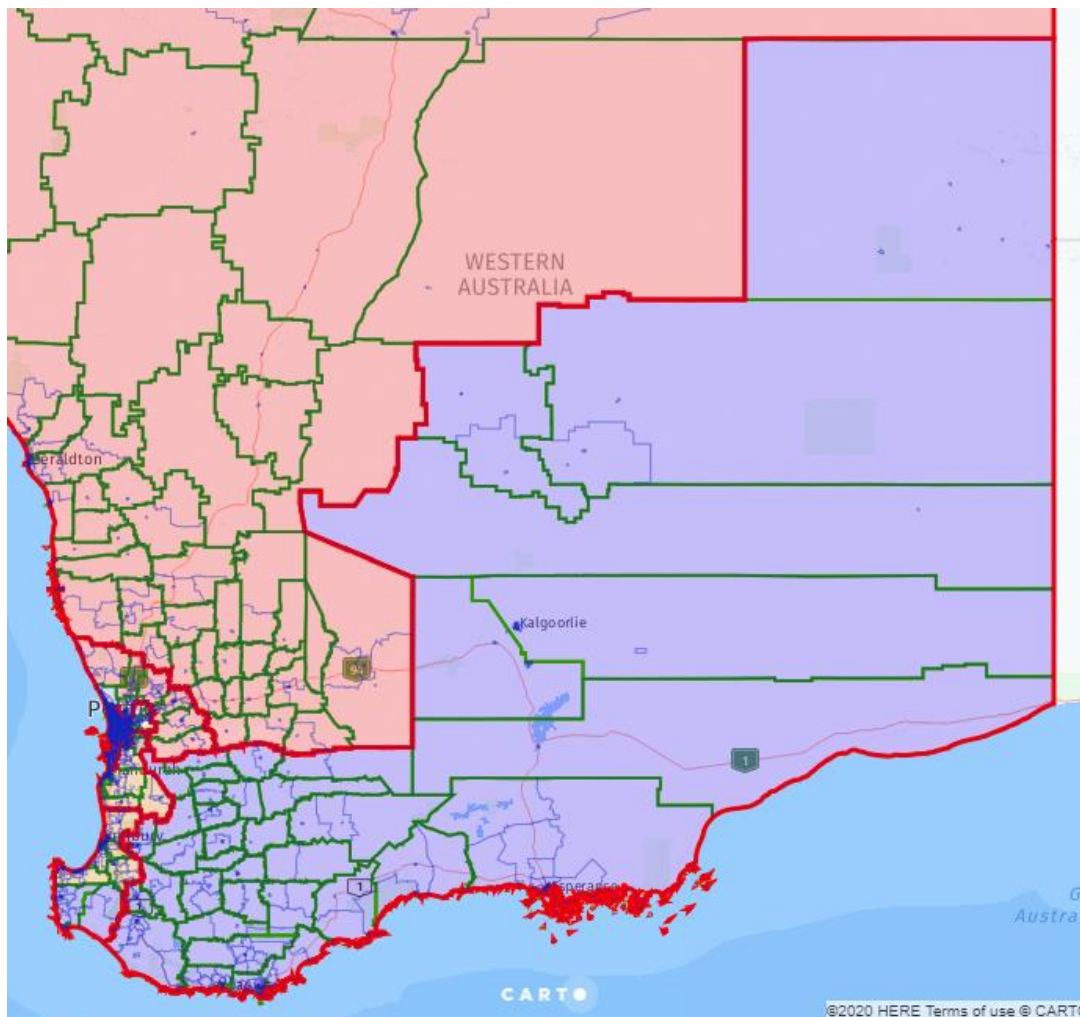
Canning to O'Connor		Actual	Projected
Brookton	(partial SA1 currently in Canning)	-	-
<b>Canning to O'Connor Total</b>		<b>-</b>	<b>-</b>
Forrest to O'Connor		Actual	Projected
Augusta	(whole)	4,321	4,891
Margaret River	(whole)	6,245	7,019
Pemberton	(balance)	1,019	1,043
<b>Forrest to O'Connor Total</b>		<b>11,585</b>	<b>12,953</b>

Final actual enrolment: 113,570 (1.25% above quota)

Final projected enrolment: 114,656 (1.87% below quota)

## Maps:

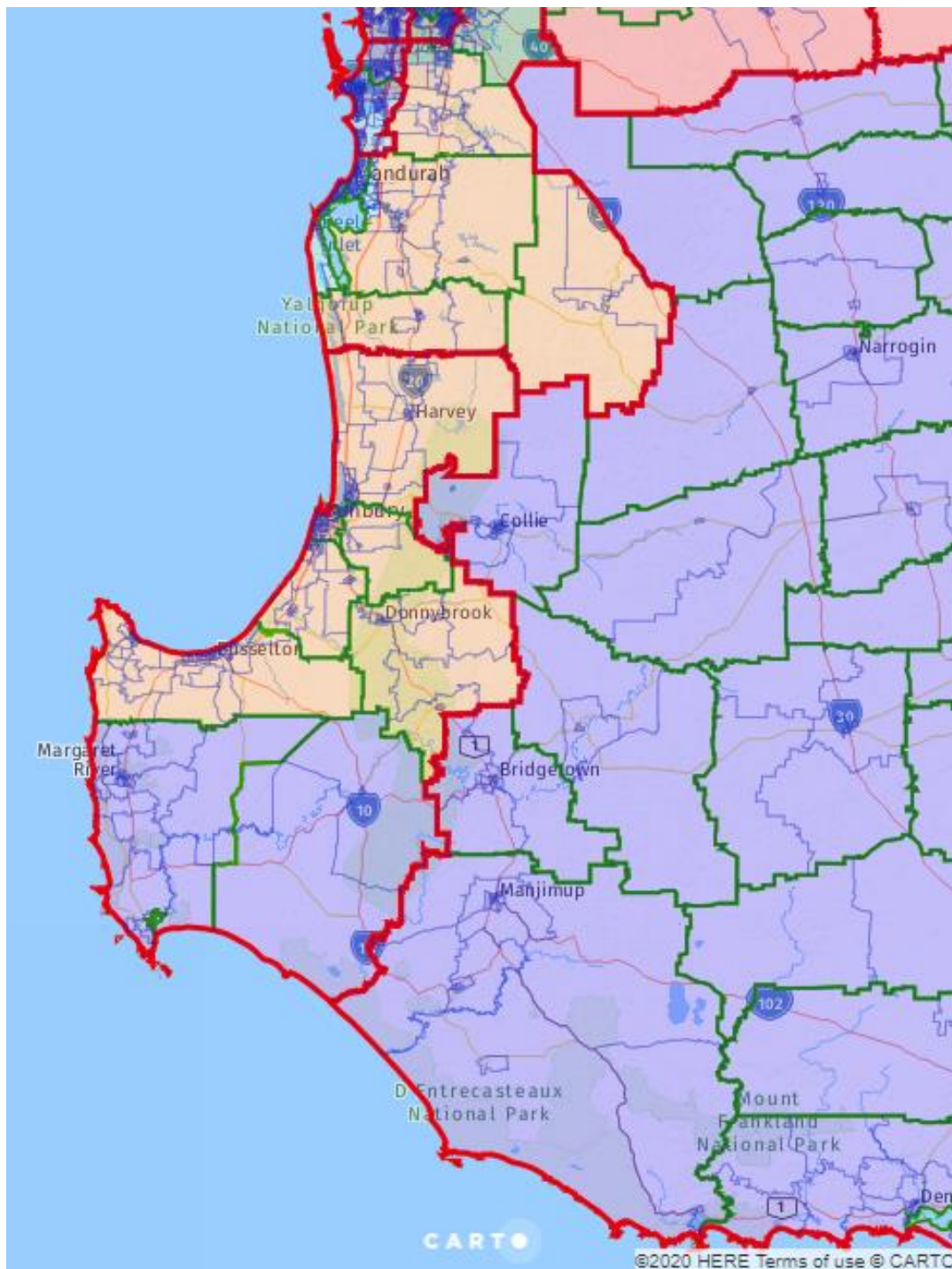
Figure 2.4.1 Division of O'Connor



Existing Boundary Suggested Division



Figure 2.4.2 Division of O'Connor (suggested western portion)



 Existing Boundary  Suggested Division

## 2.5 DIVISION OF FORREST

**Opening actual enrolment:** 107,326 (4.32% below quota)

**Opening projected enrolment:** 113,971 (2.45% below quota)

**Comment:** For the reasons outlined in sections 1.1.1 and 2.4 it is suggested that the within-tolerance Division of Forrest nonetheless be adjusted by removing the Nannup and Augusta-Margaret River LGAs and adding the Waroona and Boddington LGAs, the majority of the Murray LGA and the Serpentine-Jarrahdale LGA apart from Byford and some nearby areas.

Separating Augusta and Margaret River from closely linked communities in Busselton and Dunsborough is an outcome that would ideally be avoided, but the redistribution needs to optimise outcomes across all divisions and it is suggested that this approach is superior when O'Connor and Forrest are considered together.

The suggested configuration is nonetheless a compelling community united by the South Western Highway. The inclusion of part of the Serpentine-Jarrahdale LGA in the suggested division is not strictly required for numerical purposes – the division would be narrowly within the lower bound for projected electors without it. However, the Serpentine-Jarrahdale LGA is considered as part of the Peel region for regional development purposes, despite being included the defined metropolitan region for many other purposes. The suggested approach also provides a better balance of numbers in the remaining south metropolitan area.

### Suggested Transfers:

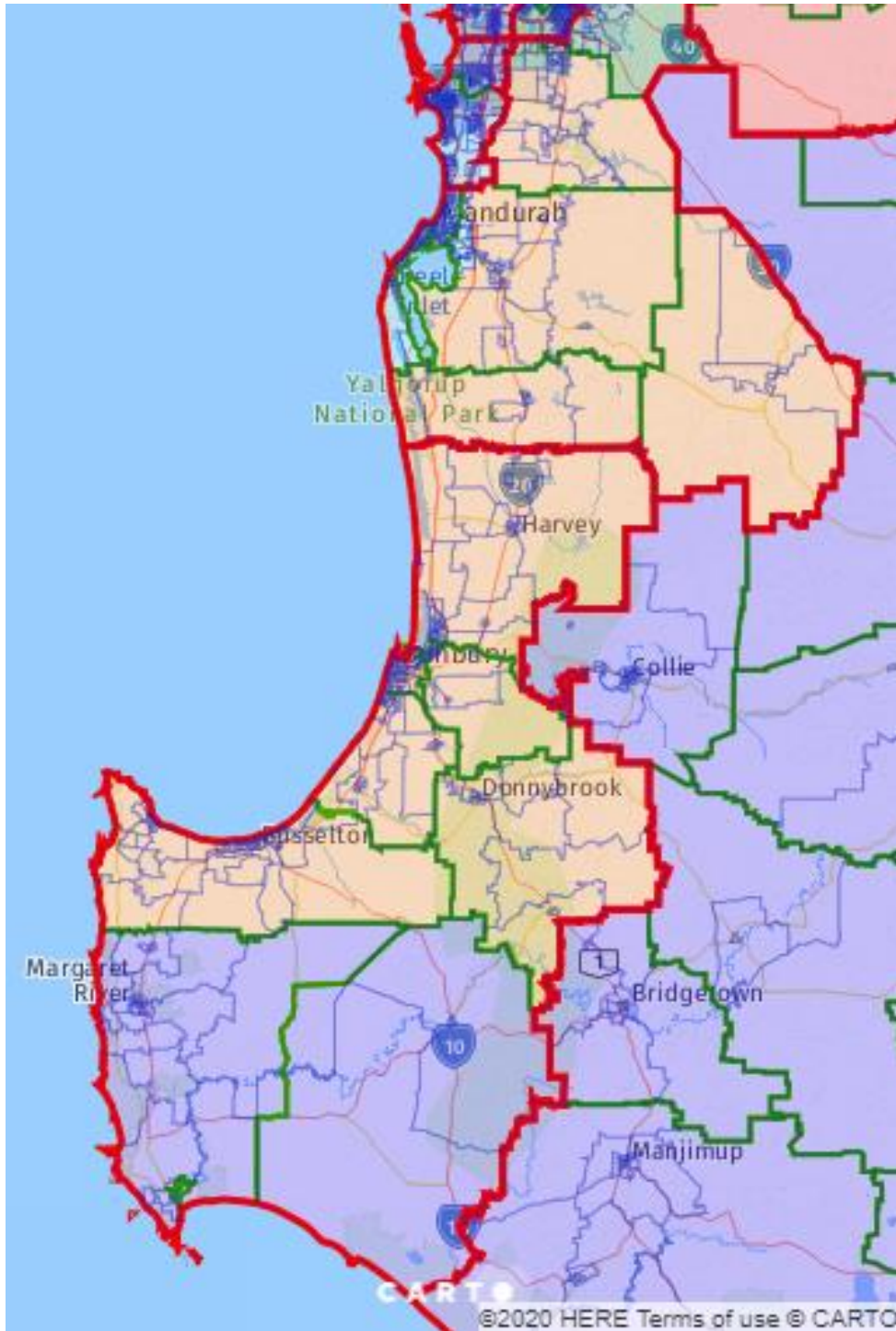
<b>Forrest to O'Connor</b>		Actual	Projected
Augusta	(whole)	4,321	4,891
Margaret River	(whole)	6,245	7,019
Pemberton	(balance)	1,019	1,043
<b>Forrest to O'Connor Total</b>		<b>11,585</b>	<b>12,953</b>
<b>Canning to Forrest</b>		Actual	Projected
Mundijong	(all SA1s except those north of Orton Rd)	2,948	3,180
Murray	(portion currently in Canning)	1,644	1,616
Pinjarra	(whole)	6,882	7,153
Serpentine - Jarrahdale	(whole)	3,005	3,185
Waroona	(balance)	2,961	3,045
<b>Canning to Forrest Total</b>		<b>17,440</b>	<b>18,179</b>

**Final actual enrolment:** 113,181 (0.90% above quota)

**Final projected enrolment:** 119,197 (2.02% above quota)

**Maps:**

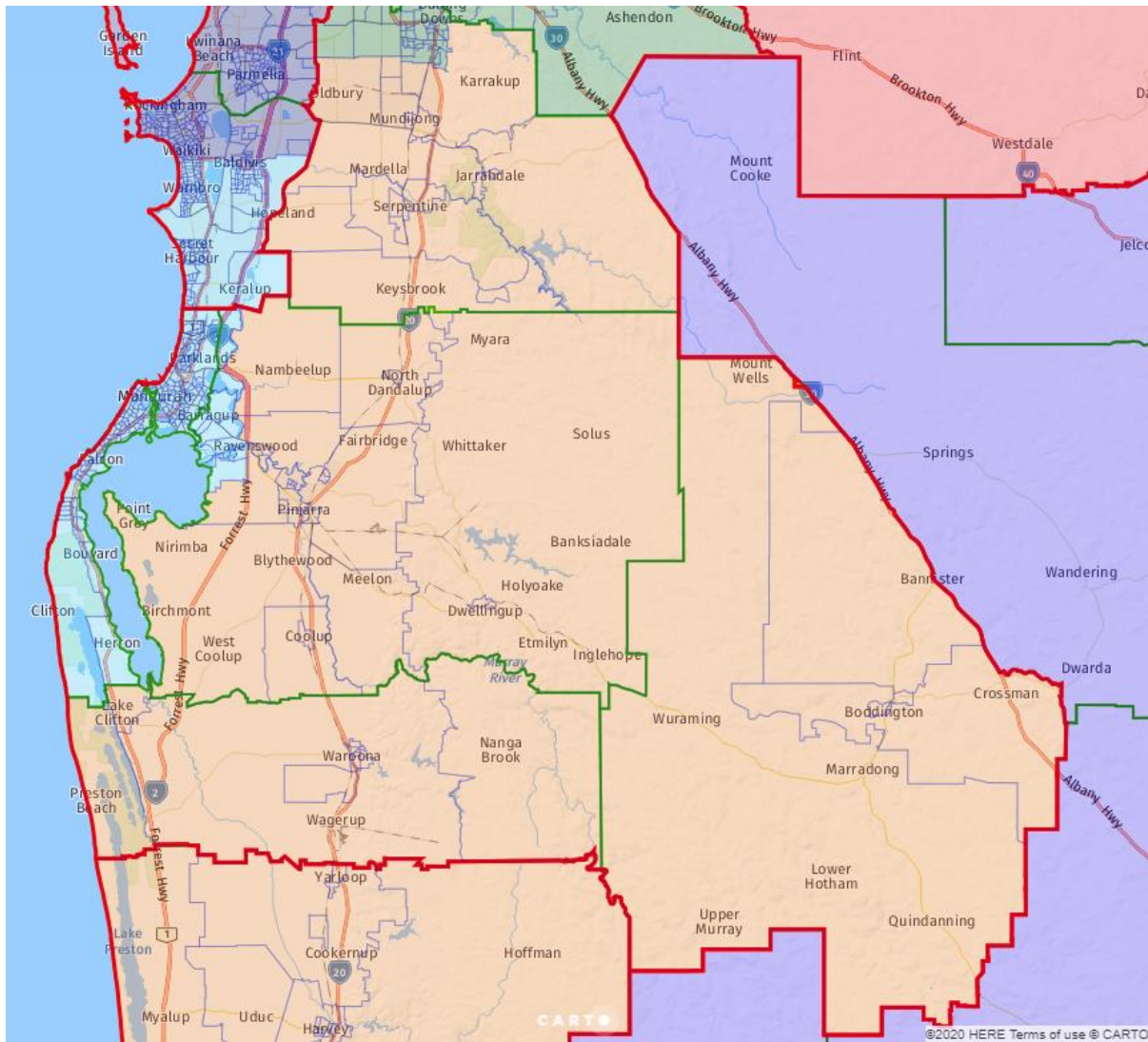
*Figure 2.5.1 Division of Forrest*



 Existing Boundary  Suggested Division



Figure 2.5.2 Division of Forrest (suggested northern portion)



Existing Boundary
  Suggested Division

## 2.6 DIVISION OF CANNING

Opening actual enrolment: 110,091 (1.86% below quota)

Opening projected enrolment: 117,835 (0.85% above quota)

**Comment:** As discussed in section 1.1.3, the proposed resolution of the shortfalls in rural divisions leaves Canning divided between Mandurah and a fringe-metropolitan area extending north to Pickering Brook. The suggested approach is to reconfigure Canning as a purely coastal division comprising the Mandurah LGA, some closely-linked areas within the Murray LGA and the southern portion of the Rockingham LGA.

While this splits the Rockingham LGA between two divisions, it creates a geographically compact Division of Canning. Options to split the Rockingham LGA in the opposite direction (with Baldivis in one division and the remainder in the other) were numerically challenging and it is suggested that the suggested boundary along Safety Bay Rd is the best option.

### Suggested Transfers:

<b>Canning to Burt</b>		Actual	Projected
Armadale - Wungong - Brookdale	(balance)	297	658
Ashendon - Lesley	(whole)	1	1
Byford	(whole)	11,362	14,054
Lesmurdie - Bickley - Carmel	(portion currently in Canning)	938	1,017
Maddington - Orange Grove - Martin	(portion currently in Canning)	1,677	1,810
Mount Nasura - Mount Richon - Bedford	(balance)	3,689	4,008
Mundijong	(all SA1s north of Orton Rd)	1,997	2,316
Roleystone	(balance)	5,288	5,475
<b>Canning to Burt Total</b>		<b>25,249</b>	<b>29,339</b>
<b>Canning to Forrest</b>		Actual	Projected
Mundijong	(all SA1s except those north of Orton Rd)	2,948	3,180
Murray	(portion currently in Canning)	1,644	1,616
Pinjarra	(whole)	6,882	7,153
Serpentine - Jarrahdale	(whole)	3,005	3,185
Waroona	(balance)	2,961	3,045
<b>Canning to Forrest Total</b>		<b>17,440</b>	<b>18,179</b>
<b>Canning to O'Connor</b>		Actual	Projected
Brookton	(partial SA1 currently in Canning)	-	-
<b>Canning to O'Connor Total</b>		<b>-</b>	<b>-</b>
<b>Brand to Canning</b>		Actual	Projected
Baldivis	(all SA1s* south of Safety Bay Rd / Folly Rd / Burma Rd)	15,962	18,905
Port Kennedy	(whole)	8,463	8,535
Rockingham Lakes	(partial** SA1 south of Safety Bay Rd)	-	-
Singleton - Golden Bay - Secret Harbour	(whole)	12,969	14,683
Warnbro	(whole)	7,194	7,309
<b>Brand to Canning Total</b>		<b>44,588</b>	<b>49,432</b>

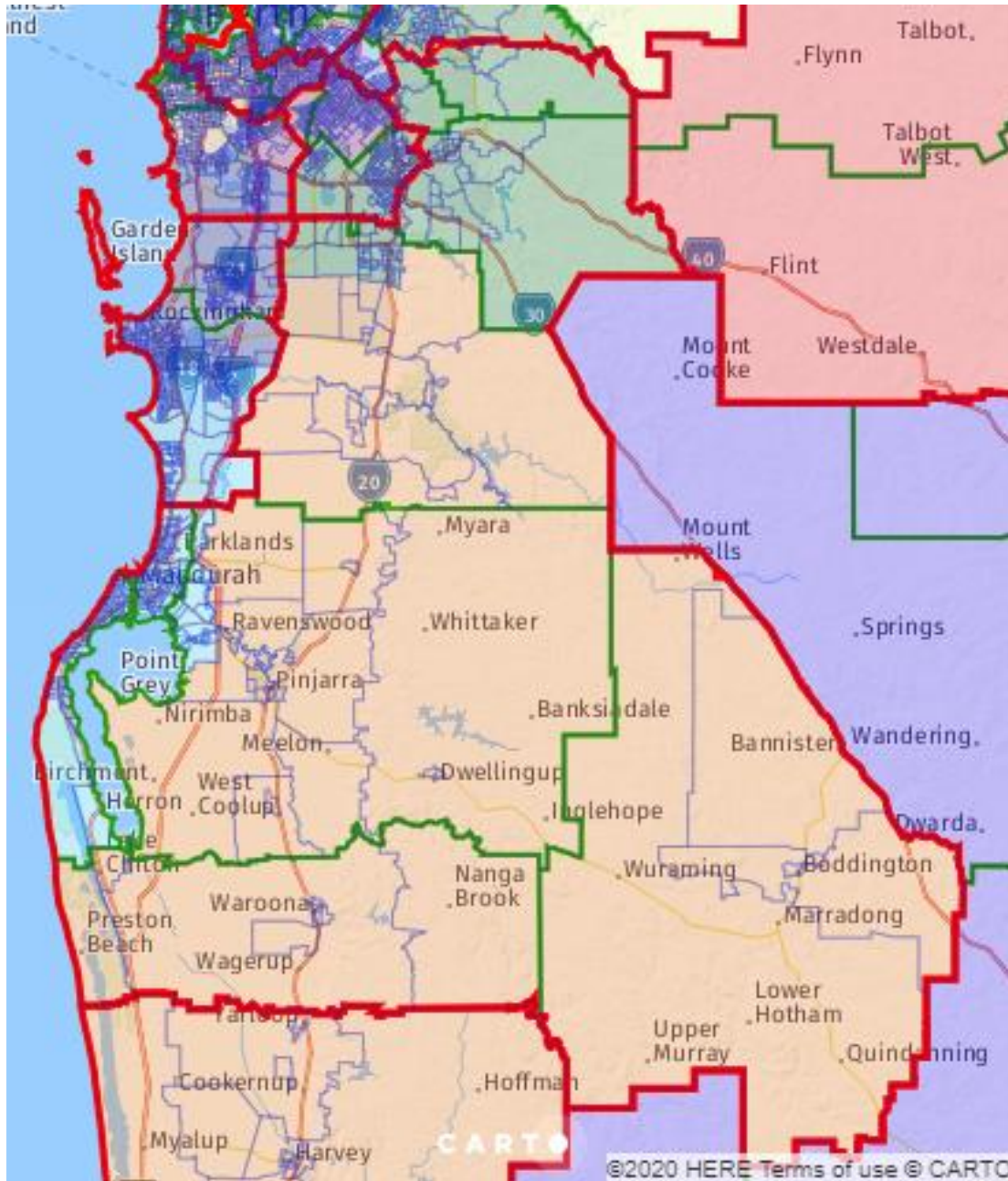
\*includes part of SA1 5118513 assumed to contain 90% of actual and projected electors \*\*assumed to contain zero electors

Final actual enrolment: 111,990 (0.16% below quota)

Final projected enrolment: 119,749 (2.49% above quota)

Maps:

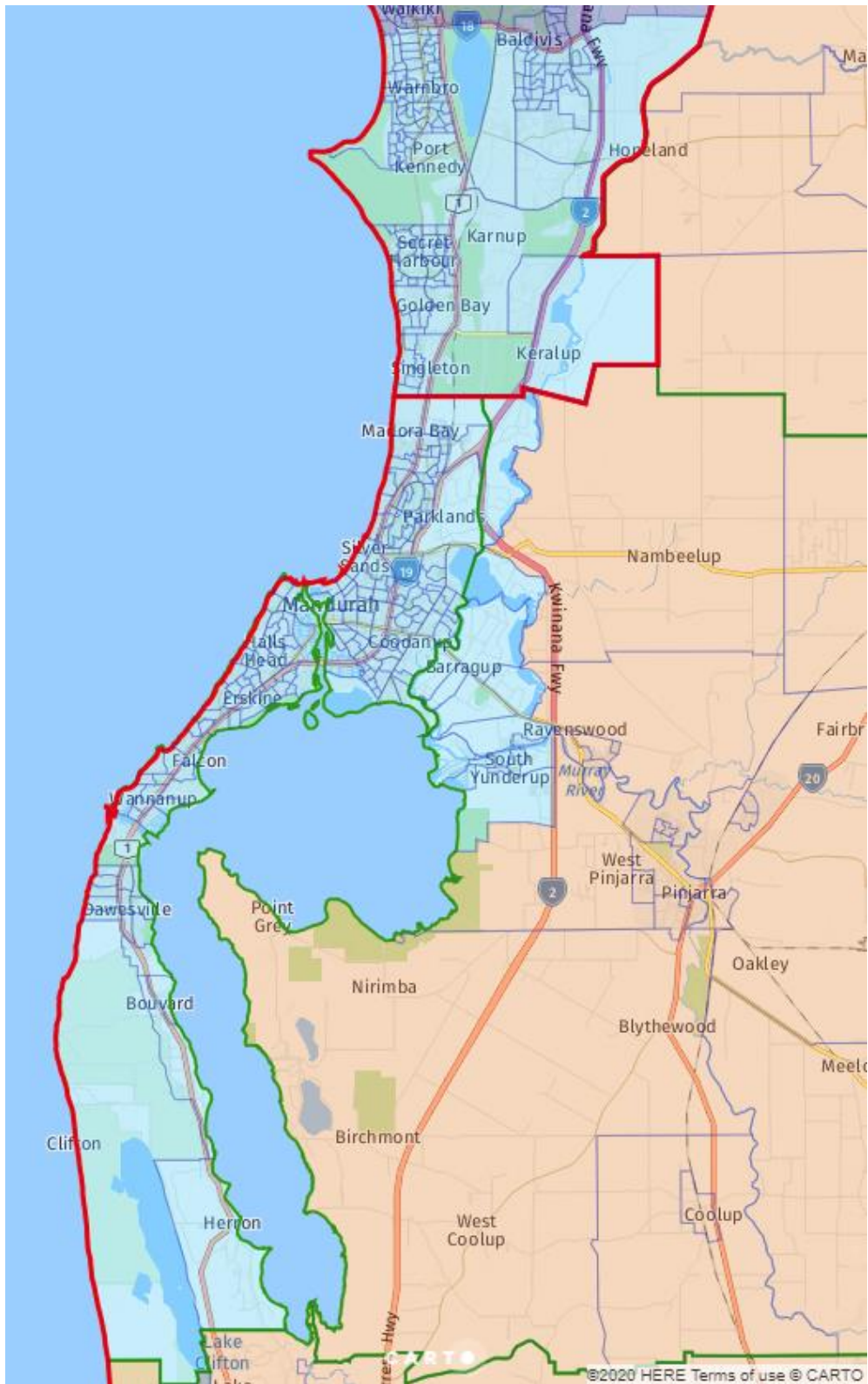
Figure 2.6.1 Division of Canning



 Existing Boundary  Suggested Division



Figure 2.6.2 Division of Canning (suggested division)



 Existing Boundary  Suggested Division

## 2.7 DIVISION OF BRAND

**Opening actual enrolment:** 110,508 (1.48% below quota)

**Opening projected enrolment:** 119,561 (2.33% above quota)

**Comment:** As part of the approach outlined in sections 1.1.3 and 2.6, Brand loses its southern end to Canning and extends north into the Cockburn LGA.

While less perfectly aligned with LGA boundaries, the suggested division remains geographically compact and serviced by the Kwinana Freeway. The suggested northern boundary with the Division of Fremantle may be capable of improvement, but the suggested option follows locality boundaries except for the retention of three Coogee SA1s in Brand for numerical purposes.

### Suggested Transfers:

<b>Brand to Canning</b>		Actual	Projected
Baldivis	(all SA1s* south of Safety Bay Rd / Folly Rd / Burma Rd)	15,962	18,905
Port Kennedy	(whole)	8,463	8,535
Rockingham Lakes	(partial** SA1 south of Safety Bay Rd)	-	-
Singleton - Golden Bay - Secret Harbour	(whole)	12,969	14,683
Warnbro	(whole)	7,194	7,309
<b>Brand to Canning Total</b>		<b>44,588</b>	<b>49,432</b>

\*includes part of SA1 5118513 assumed to contain 90% of actual and projected electors \*\*assumed to contain zero electors

<b>Fremantle to Brand</b>		Actual	Projected
Banjup	(all SA1s except 5114807)	10,133	10,788
Beeliar - Wattleup	(whole)	5,970	6,673
Coogee	(SA1s 5115210, 5115211, 5115217)	1,665	1,949
Henderson	(whole)	9	9
South Lake - Cockburn Central	(whole)	7,924	8,056
Success - Hammond Park	(whole)	9,558	10,562
Yangebup	(whole)	5,188	5,276
<b>Fremantle to Brand Total</b>		<b>40,447</b>	<b>43,313</b>

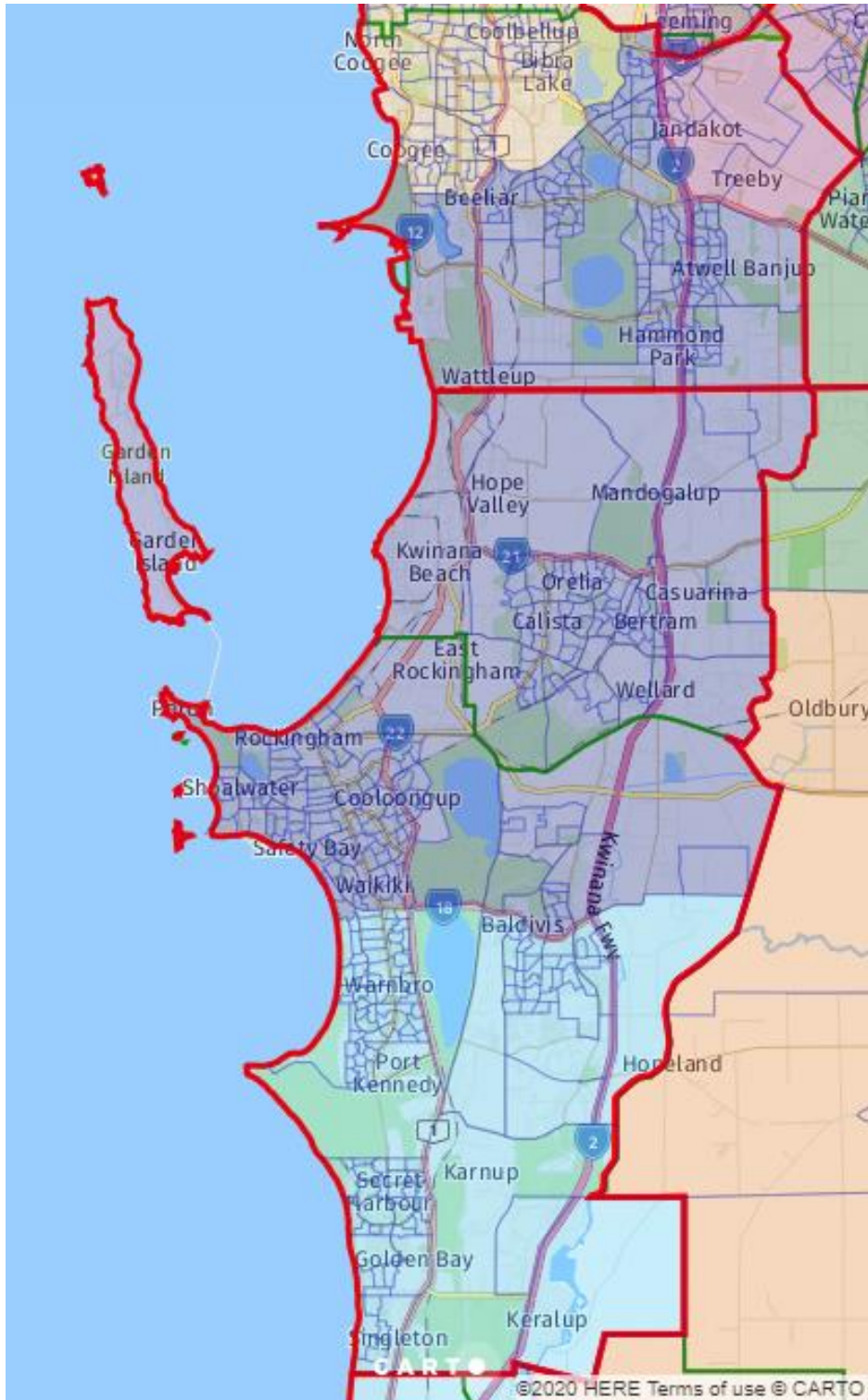
**Final actual enrolment:** 106,367 (5.18% below quota)

**Final projected enrolment:** 113,442 (2.91% below quota)



**Maps:**

*Figure 2.7.1 Division of Brand*



 Existing Boundary  Suggested Division

## 2.8 DIVISION OF FREMANTLE

Opening actual enrolment: 109,269 (2.59% below quota)

Opening projected enrolment: 115,628 (1.04% below quota)

**Comment:** The cascade of changes outlines in section 1.1.3 sees significant changes to the Division of Fremantle but creates yet another compact geographical division that is proposed to unite a significant contiguous area south of the river and west of the Kwinana Freeway, including the whole of the portion of the Melville LGA that fits that description.

### Suggested Transfers:

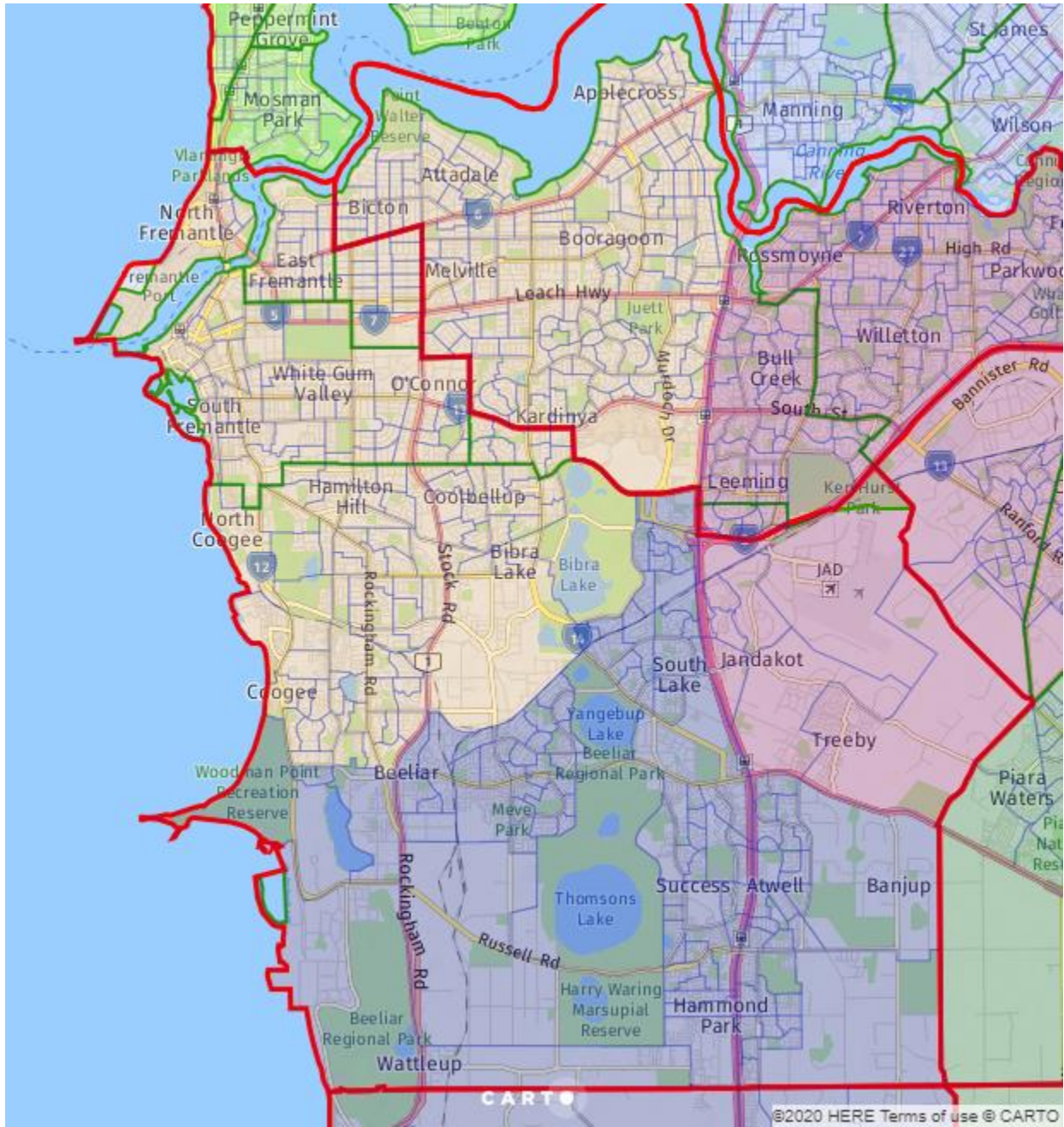
<b>Fremantle to Brand</b>		Actual	Projected
Banjup	(all SA1s except 5114807)	10,133	10,788
Beeliar - Wattleup	(whole)	5,970	6,673
Coogee	(SA1s 5115210, 5115211, 5115217)	1,665	1,949
Henderson	(whole)	9	9
South Lake - Cockburn Central	(whole)	7,924	8,056
Success - Hammond Park	(whole)	9,558	10,562
Yangebup	(whole)	5,188	5,276
<b>Fremantle to Brand Total</b>		<b>40,447</b>	<b>43,313</b>
<b>Fremantle to Tangney</b>		Actual	Projected
Banjup	(SA1 5114807)	1,823	2,821
Jandakot	(balance)	1,773	1,851
<b>Fremantle to Tangney Total</b>		<b>3,596</b>	<b>4,672</b>
<b>Tangney to Fremantle</b>		Actual	Projected
Applecross - Ardross	(whole)	8,050	8,000
Bateman	(whole)	2,575	2,543
Bicton - Palmyra	(balance)	5,294	5,524
Booragoon	(all SA1s west of Kwinana Fwy)	9,717	9,842
Melville	(whole)	12,204	12,842
Murdoch - Kardinya	(balance)	6,176	6,307
Willagee	(whole)	3,423	3,311
Winthrop	(whole)	4,185	4,172
<b>Tangney to Fremantle Total</b>		<b>51,624</b>	<b>52,541</b>

Final actual enrolment: 116,850 (4.17% above quota)

Final projected enrolment: 120,184 (2.86% above quota)

Maps:

Figure 2.8.1 Division of Fremantle (excluding Rottne)st)



Existing Boundary Suggested Division

## 2.9 DIVISION OF TANGNEY

**Opening actual enrolment:** 94,827 (15.46% below quota)

**Opening projected enrolment:** 95,804 (18.00% below quota)

**Comment:** As discussed in section 1.2, the claim of this suggested division to retain the name of Tangney is somewhat tenuous, as it draws a majority of projected electors from the existing Division of Burt. However, with another division also having a claim to that name, it is suggested that retaining Tangney is an option.

The suggested division spans several LGAs but has very strong boundaries in the form of the Canning River, Tonkin Hwy, the northern boundary of the Armadale LGA, and the Kwinana Freeway.

### Suggested Transfers:

<b>Tangney to Fremantle</b>		Actual	Projected
Applecross - Ardross	(whole)	8,050	8,000
Bateman	(whole)	2,575	2,543
Bicton - Palmyra	(balance)	5,294	5,524
Booragoon	(all SA1s west of Kwinana Fwy)	9,717	9,842
Melville	(whole)	12,204	12,842
Murdoch - Kardinya	(balance)	6,176	6,307
Willagee	(whole)	3,423	3,311
Winthrop	(whole)	4,185	4,172
<b>Tangney to Fremantle Total</b>		<b>51,624</b>	<b>52,541</b>

<b>Burt to Tangney</b>		Actual	Projected
Beckenham - Kenwick - Langford	(portion currently in Burt)	3,277	3,295
Canning Vale - East	(whole)	12,913	13,771
Canning Vale - West	(whole)	6,533	6,707
Canning Vale Commercial	(whole)	1	1
Gosnells	(whole)	12,915	12,771
Huntingdale - Southern River	(whole)	12,204	13,635
Thornlie	(whole)	14,877	14,710
<b>Burt to Tangney Total</b>		<b>62,720</b>	<b>64,890</b>

<b>Fremantle to Tangney</b>		Actual	Projected
Banjup	(SA1 5114807)	1,823	2,821
Jandakot	(balance)	1,773	1,851
<b>Fremantle to Tangney Total</b>		<b>3,596</b>	<b>4,672</b>

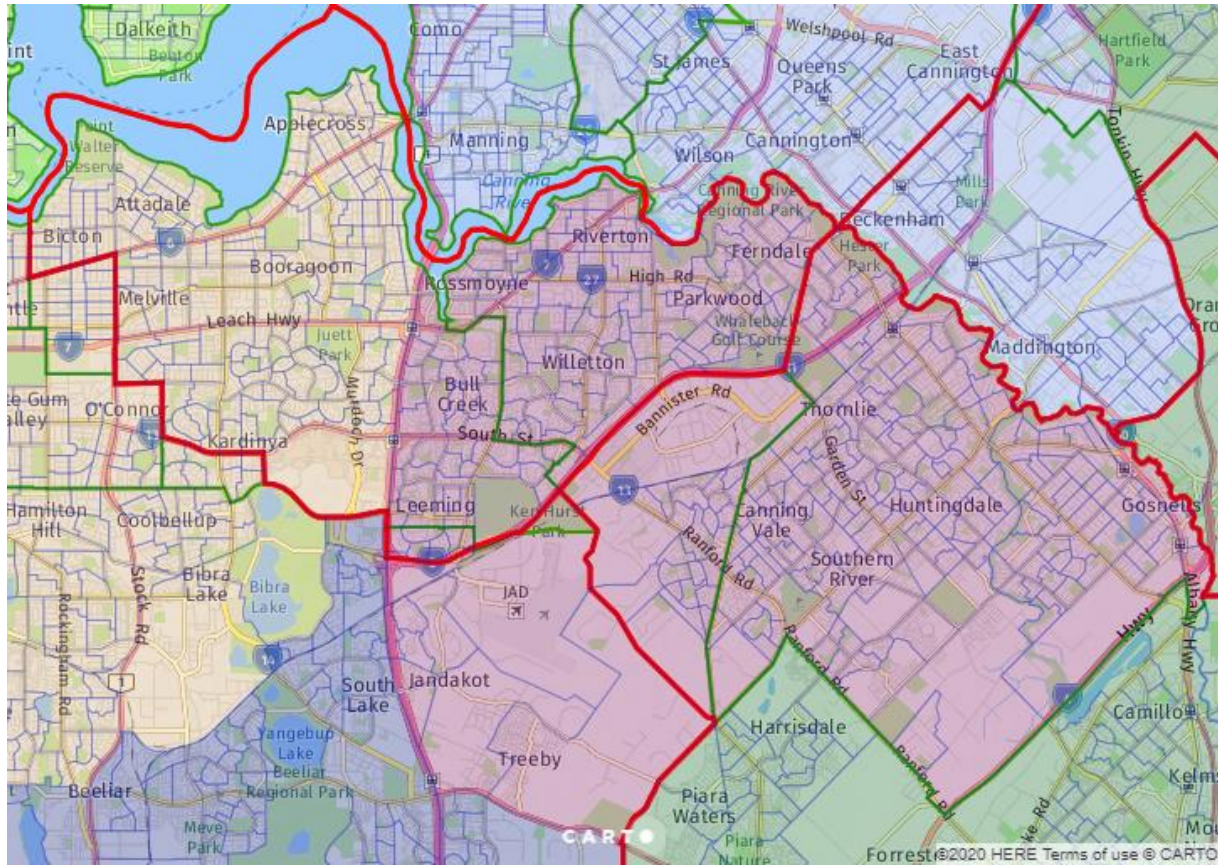
**Final actual enrolment:** 109,519 (2.37% below quota)

**Final projected enrolment:** 112,825 (3.43% below quota)



## Maps:

Figure 2.9.1 Division of Tangney



Existing Boundary  Suggested Division

## 2.10 DIVISION OF SWAN

Opening actual enrolment: 102,932 (8.24% below quota)

Opening projected enrolment: 105,211 (9.95% below quota)

**Comment:** The division is below-tolerance but well-defined by the Swan and Canning Rivers. As such it is not part of the proposed cascade of reconfigured divisions from Canning through to Hasluck. Rather, it is suggested that the division can be both improved and brought into numerical compliance by extending along Albany Hwy to add an area between the Tonkin Hwy and the Canning River, and by ceding the High Wycombe SA2 that is separated by Perth Airport from the rest of the current division.

### Suggested Transfers:

Swan to Burt		Actual	Projected
Forrestfield - Wattle Grove	(portion currently in Swan and east of Tonkin Hwy)	15	16
High Wycombe	(whole)	8,290	8,360
<b>Swan to Burt Total</b>		<b>8,305</b>	<b>8,376</b>

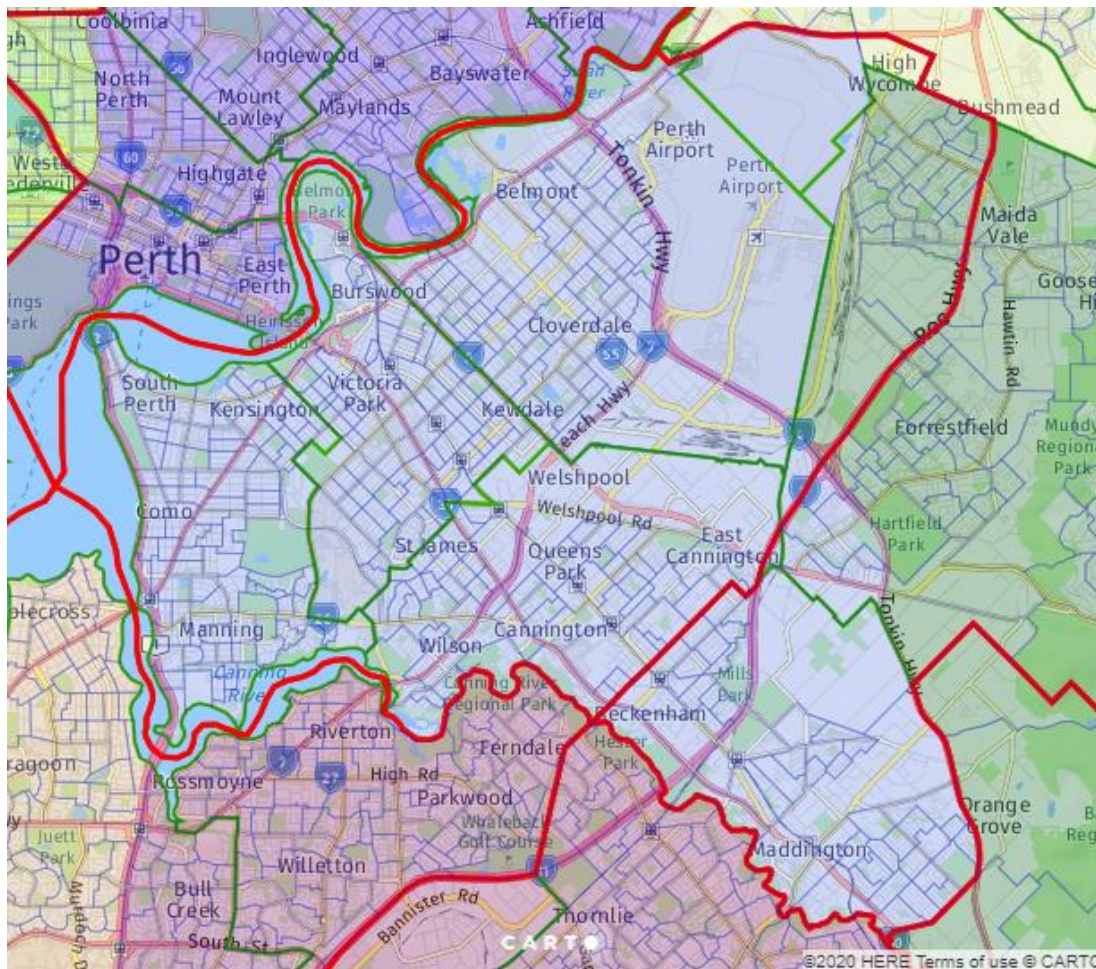
Swan to Hasluck		Actual	Projected
Hazelmere - Guildford	(portion of SA1 5106104 that is currently in Swan)	-	-
<b>Swan to Hasluck Total</b>		-	-
Hasluck to Swan		Actual	Projected
Beckenham - Kenwick - Langford	(portion currently in Hasluck)	8,243	8,538
Cannington - Queens Park	(partial SA1 currently in Hasluck)	-	-
Forrestfield - Wattle Grove	(portion currently in Hasluck and west of Tonkin Hwy)	3,049	3,535
Maddington - Orange Grove - Martin	(portion currently in Hasluck)	6,989	7,299
Welshpool	(partial SA1 currently in Hasluck)	-	-
<b>Hasluck to Swan Total</b>		<b>18,281</b>	<b>19,372</b>

Final actual enrolment: 112,908 (0.66% above quota)

Final projected enrolment: 116,207 (0.54% below quota)

**Maps:**

Figure 2.10.1 Division of Swan



Existing Boundary  Suggested Division



## 2.11 DIVISION OF BURT

Opening actual enrolment: 109,053 (2.78% below quota)

Opening projected enrolment: 116,511 (0.28% below quota)

**Comment:** The suggested new version of this division draws more electors from the former version than from any other division, but is nonetheless a substantial re-draw that creates a compelling division centred on the Armadale and Kalamunda LGAs, plus Byford and some lower density parts of the Gosnells LGA, mainly east of Tonkin Hwy.

### Suggested Transfers:

<b>Burt to Tangney</b>		Actual	Projected
Beckenham - Kenwick - Langford	(portion currently in Burt)	3,277	3,295
Canning Vale - East	(whole)	12,913	13,771
Canning Vale - West	(whole)	6,533	6,707
Canning Vale Commercial	(whole)	1	1
Gosnells	(whole)	12,915	12,771
Huntingdale - Southern River	(whole)	12,204	13,635
Thornlie	(whole)	14,877	14,710
<b>Burt to Tangney Total</b>		<b>62,720</b>	<b>64,890</b>

<b>Canning to Burt</b>		Actual	Projected
Armadale - Wungong - Brookdale	(balance)	297	658
Ashendon - Lesley	(whole)	1	1
Byford	(whole)	11,362	14,054
Lesmurdie - Bickley - Carmel	(portion currently in Canning)	938	1,017
Maddington - Orange Grove - Martin	(portion currently in Canning)	1,677	1,810
Mount Nasura - Mount Richon - Bedford	(balance)	3,689	4,008
Mundijong	(all SA1s north of Orton Rd)	1,997	2,316
Roleystone	(balance)	5,288	5,475
<b>Canning to Burt Total</b>		<b>25,249</b>	<b>29,339</b>

<b>Hasluck to Burt</b>		Actual	Projected
Forrestfield - Wattle Grove	(all SA1s east of Tonkin Hwy)	9,296	9,091
Kalamunda - Maida Vale - Gooseberry Hi	(whole)	11,505	11,527
Lesmurdie - Bickley - Carmel	(portion currently in Hasluck)	7,515	7,811
Malmalling - Reservoir	(part* of SA1 5105201 south-west of Mundaring Weir)	-	-
Perth Airport	(partial SA1 currently in Hasluck)	-	-
<b>Hasluck to Burt Total</b>		<b>28,316</b>	<b>28,429</b>

\*assumed to contain none of the 9 actual and projected electors in the SA1

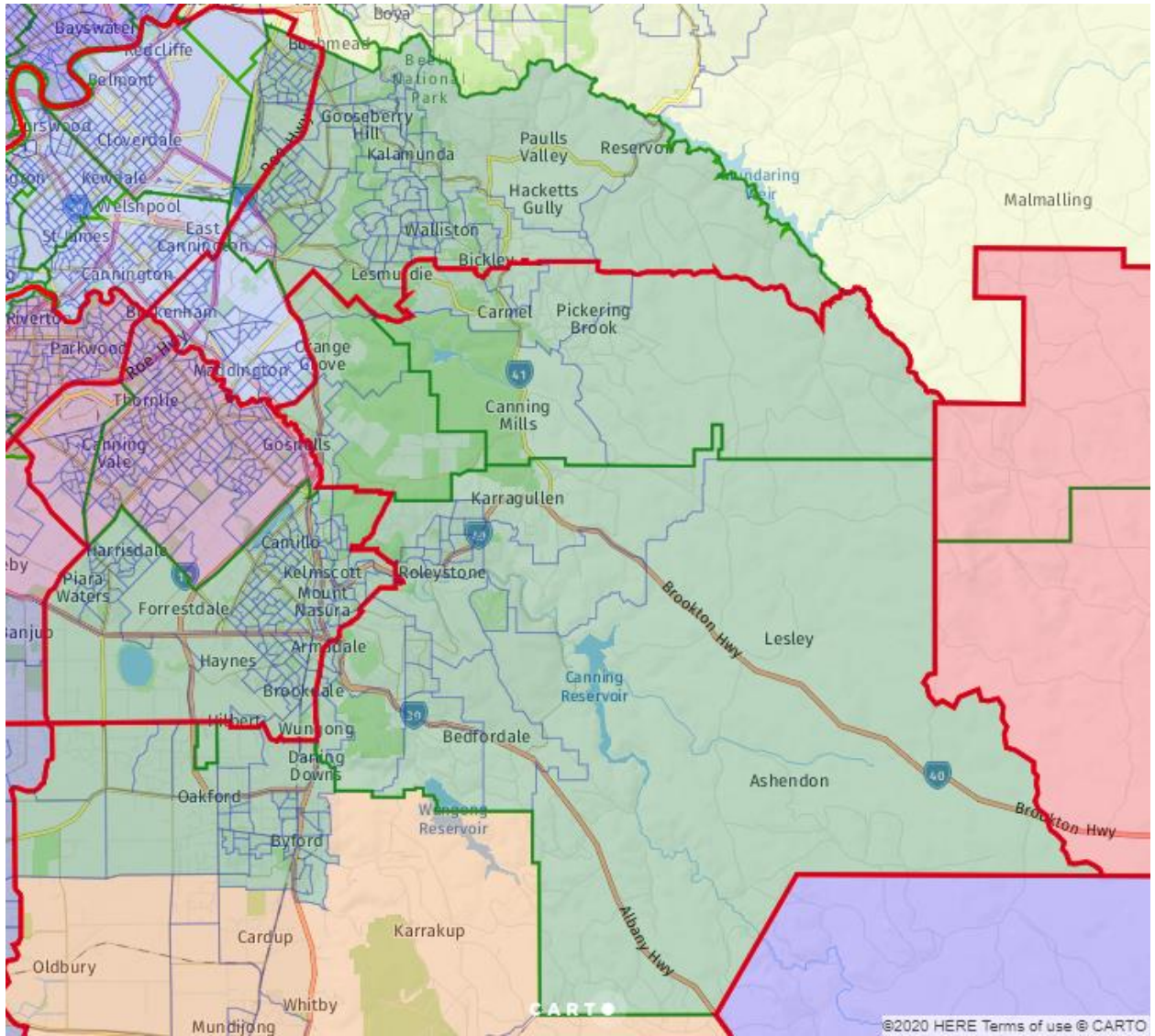
<b>Swan to Burt</b>		Actual	Projected
Forrestfield - Wattle Grove	(portion currently in Swan and east of Tonkin Hwy)	15	16
High Wycombe	(whole)	8,290	8,360
<b>Swan to Burt Total</b>		<b>8,305</b>	<b>8,376</b>

Final actual enrolment: 108,203 (3.54% below quota)

Final projected enrolment: 117,765 (0.79% above quota)

**Maps:**

Figure 2.11.1 Division of Burt



Existing Boundary  Suggested Division



## 2.12 DIVISION OF CURTIN

**Opening actual enrolment:** 101,848 (9.20% below quota)

**Opening projected enrolment:** 105,373 (9.81% below quota)

**Comment:** The Division is below tolerance and extending north is not a viable option because it would leave the Division of Stirling with only a narrow strip west of the Kwinana Freeway.

As such, it is suggested that Curtin should extend east to gain electors from the Divisions of Perth and Stirling, with Loftus St/London St and Wanneroo Rd forming the new eastern boundary.

This transfer also facilitates an improvement of the existing northern boundary with the Division of Stirling, which is suggested to continue along Scarborough Beach Rd and then Beatrice St/Cedric St.

### Suggested Transfers:

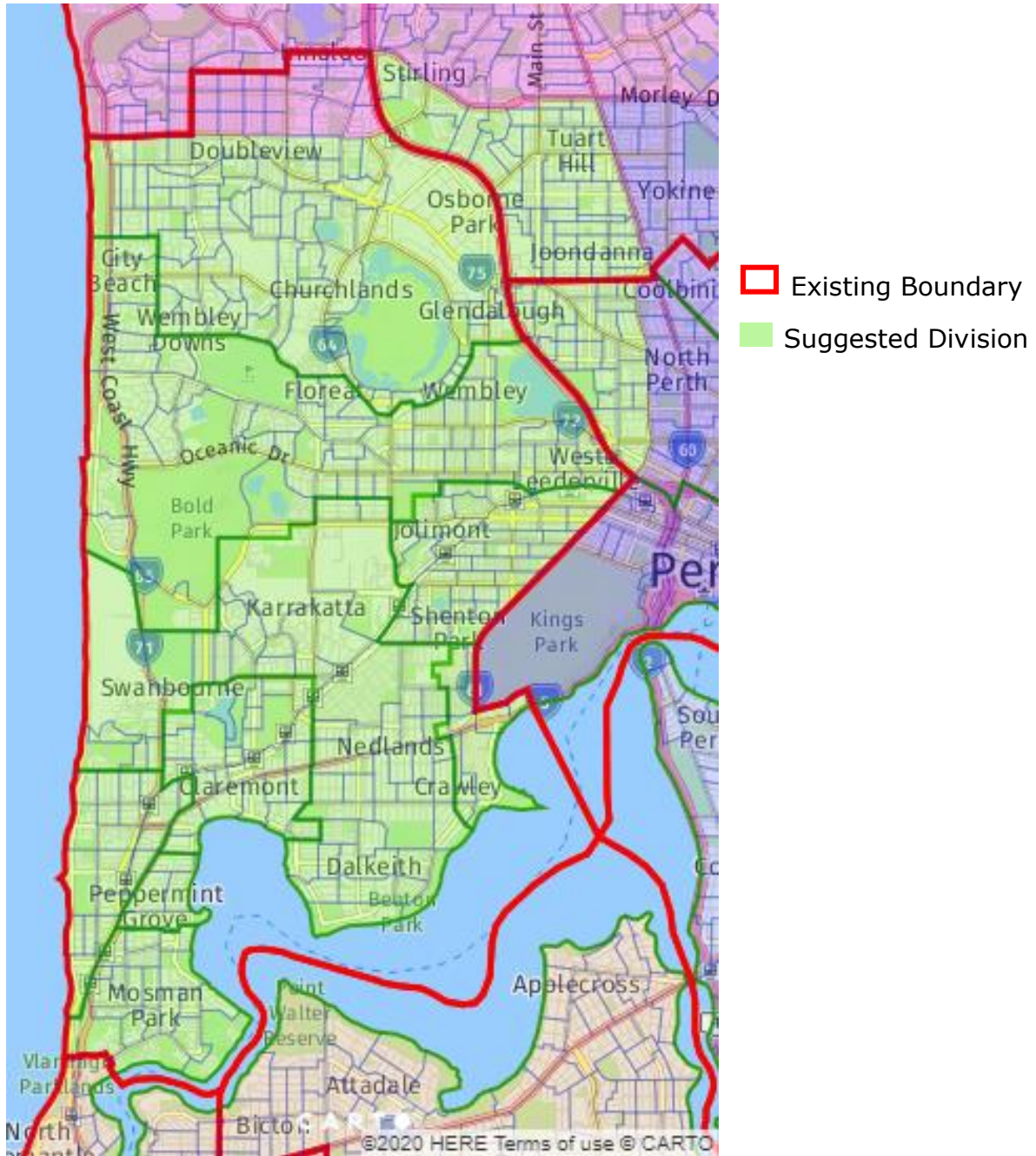
<b>Curtin to Stirling</b>			Actual	Projected
Innaloo - Doubleview	(all SA1s north of both Scarborough Beach Rd and Beatrice St / Cedric St)		7,156	7,267
Scarborough	(all SA1s north of Scarborough Beach Rd)		1,235	1,311
<b>Curtin to Stirling Total</b>			<b>8,391</b>	<b>8,578</b>
<b>Perth to Curtin</b>			Actual	Projected
Mount Hawthorn - Leederville	(whole)		7,855	8,175
Stirling - Osborne Park	(partial SA1 currently in Perth)		-	-
<b>Perth to Curtin Total</b>			<b>7,855</b>	<b>8,175</b>
<b>Stirling to Curtin</b>			Actual	Projected
Stirling - Osborne Park	(all SA1s south of Karrinyup Rd)		5,291	5,245
Tuart Hill - Joondanna	(whole)		8,189	8,080
<b>Stirling to Curtin Total</b>			<b>13,480</b>	<b>13,325</b>

**Final actual enrolment:** 114,792 (2.34% above quota)

**Final projected enrolment:** 118,295 (1.25% above quota)

**Maps:**

*Figure 2.12.1 Division of Curtin*



## 2.13 DIVISION OF PERTH

Opening actual enrolment: 104,026 (7.26% below quota)

Opening projected enrolment: 106,518 (8.83% below quota)

**Comment:** Being below quota and with a transfer of electors to the Division of Curtin suggested in section 2.12, Perth needs to gain electors and it is suggested that it do so in the form of electors in Yokine and the portion of Dianella that is south of Morley Drive.

### Suggested Transfers:

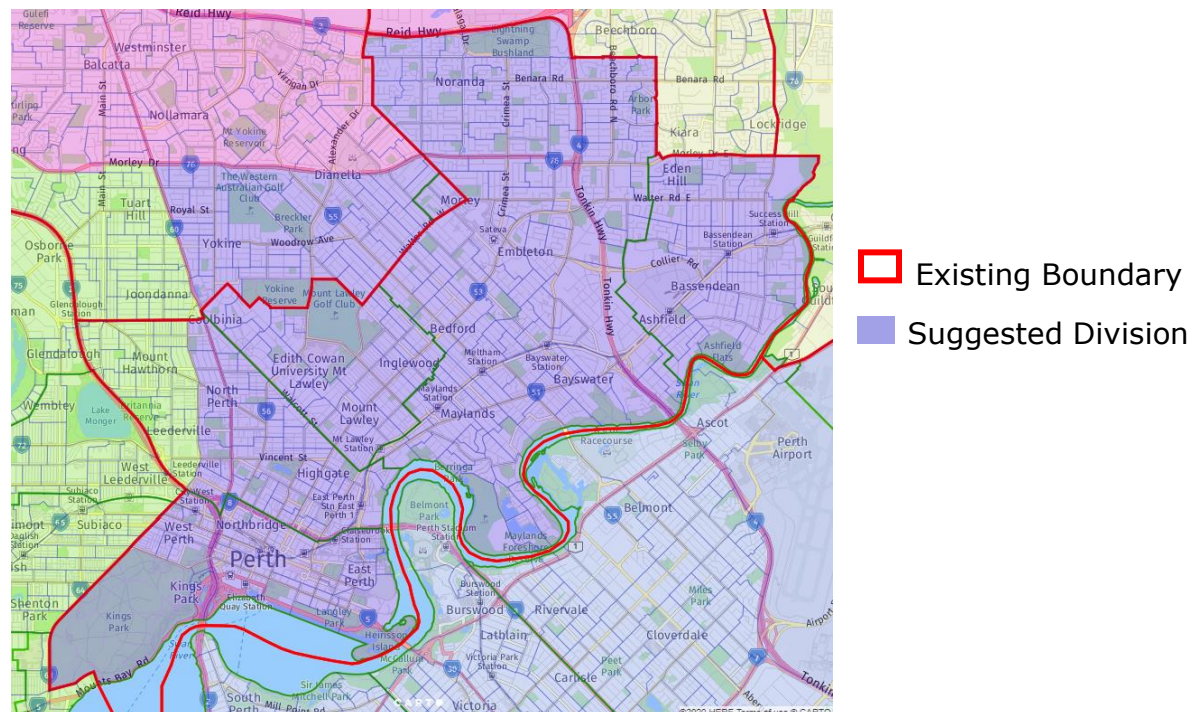
Perth to Curtin		Actual	Projected
Mount Hawthorn - Leederville	(whole)	7,855	8,175
Stirling - Osborne Park	(partial SA1 currently in Perth)	-	-
<b>Perth to Curtin Total</b>		<b>7,855</b>	<b>8,175</b>
Stirling to Perth		Actual	Projected
Dianella	(all SA1s south of Morley Dr)	8,945	8,995
Morley	(balance)	533	531
Yokine - Coolbinia - Menora	(balance)	8,374	8,158
<b>Stirling to Perth Total</b>		<b>17,852</b>	<b>17,684</b>

Final actual enrolment: 114,023 (1.65% above quota)

Final projected enrolment: 116,027 (0.69% below quota)

### Maps:

Figure 2.13.1 Division of Perth





## 2.14 DIVISION OF MOORE

Opening actual enrolment: 102,441 (8.68% below quota)

Opening projected enrolment: 104,031 (10.96% below quota)

**Comment:** The division is below the permitted numerical range.

Transferring the remainder of the Joondalup LGA from the Division of Cowan both resolves the numerical shortfall and unites common interests in the division.

### Suggested Transfers:

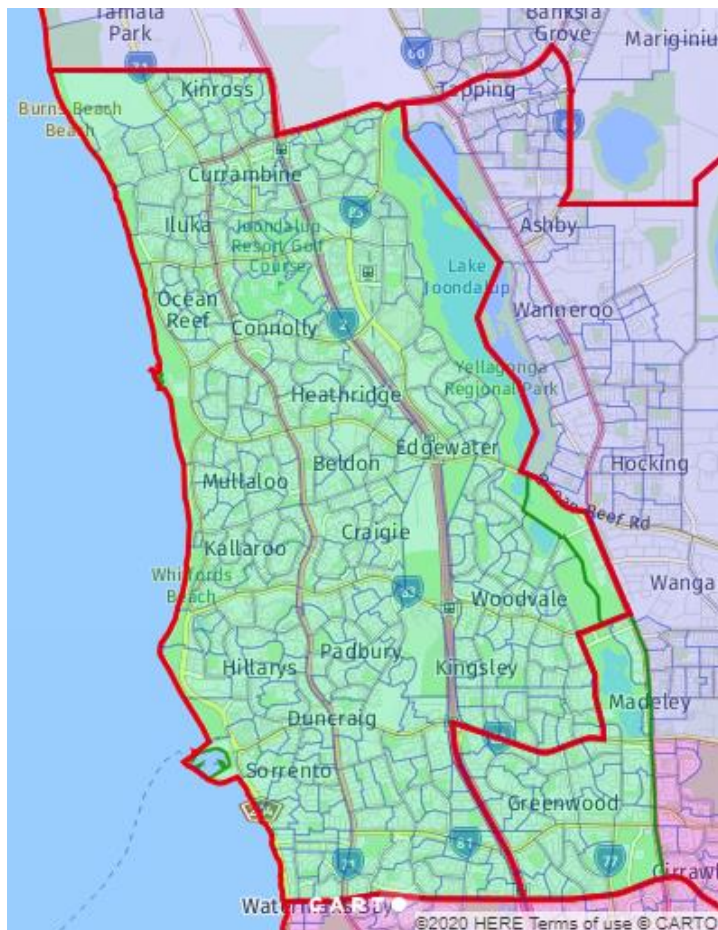
Cowan to Moore		Actual	Projected
Greenwood - Warwick	(balance)	9,619	9,747
Kingsley	(balance)	780	763
<b>Cowan to Moore Total</b>		<b>10,399</b>	<b>10,510</b>

Final actual enrolment: 112,840 (0.60% above quota)

Final projected enrolment: 114,541 (1.97% below quota)

### Maps:

Figure 2.14.1 Division of Moore



- Existing Boundary
- Suggested Division

## 2.15 DIVISION OF PEARCE

**Opening actual enrolment:** 125,488 (11.87% above quota)

**Opening projected enrolment:** 142,491 (21.96% above quota)

**Comment:** After the necessary transfers to the Division of Durack, the Division of Pearce would be within numerical tolerances and comprised of a contiguous area on the northern fringe of the metropolitan area.

However, it would also separate two “half-divisions” – the remainder of Cowan (after transfers to Moore and also the likely donor of electors to replenish Stirling), and the northern part of Hasluck (having been partitioned as outlined in section 1.1.2).

The suggested solution is to reconfigure the area into a western division based in the Wanneroo LGA and an eastern division comprising most of the Swan LGA and all of the Mundaring LGA.

The western of the two divisions would retain the name Pearce and unite a clearly defined community essentially comprising the Wanneroo LGA north of Hepburn Ave.

### Suggested Transfers:

<b>Pearce to Durack</b>		Actual	Projected
Chittering	(whole)	3,920	4,408
Gingin - Dandaragan	(portion currently in Pearce)	3,582	3,658
Northam	(whole)	7,349	7,228
Toodyay	(whole)	3,326	3,453
York - Beverley	(balance)	4,017	4,000
<b>Pearce to Durack Total</b>		<b>22,194</b>	<b>22,747</b>

<b>Pearce to Hasluck</b>		Actual	Projected
Avon Valley National Park	(whole)	5	5
Beechboro	(portion currently in Pearce)	2,915	3,722
Bullsbrook	(whole)	3,618	3,993
Ellenbrook	(whole)	25,183	29,845
Gidgegannup	(balance)	24	26
Lockridge - Kiara	(portion currently in Pearce)	13	19
Melaleuca - Lexia	(whole)	2	2
Middle Swan - Herne Hill	(balance)	1,509	1,529
Stratton - Jane Brook	(partial SA1 currently in Pearce)	-	-
The Vines	(whole)	7,604	9,100
Walyunga National Park	(whole)	1	1
Wanneroo	(partial SA1 currently in Pearce)	23	27
<b>Pearce to Hasluck Total</b>		<b>40,897</b>	<b>48,269</b>

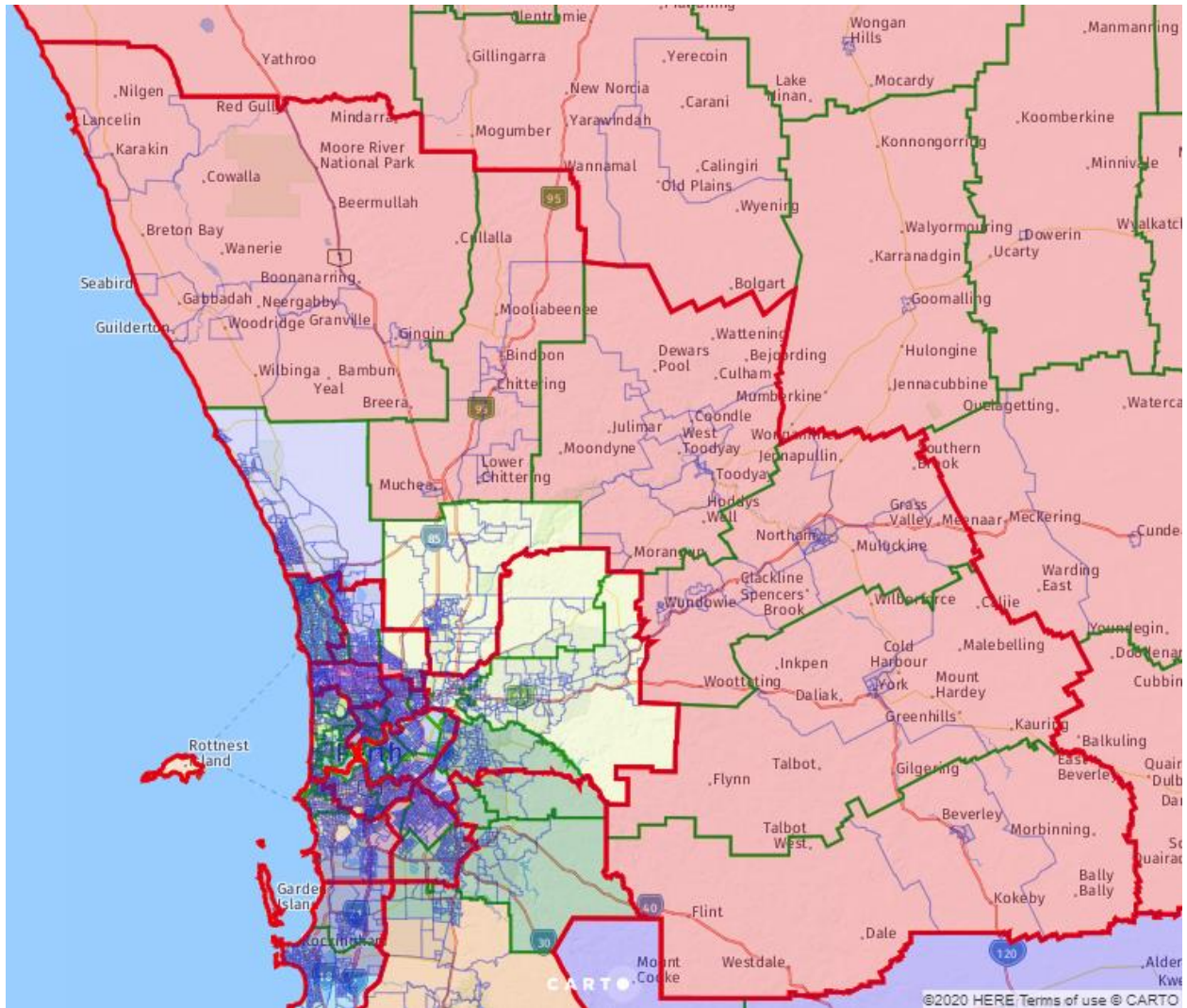
<b>Cowan to Pearce</b>		Actual	Projected
Joondalup - Edgewater	(partial SA1 currently in Cowan)	-	-
Madeley - Darch - Landsdale	(whole)	18,088	20,464
Tapping - Ashby - Sinagra	(balance)	7,750	8,133
Wanneroo	(portion currently in Cowan)	18,007	18,756
Woodvale	(partial SA1 currently in Cowan)	-	-
<b>Cowan to Pearce Total</b>		<b>43,845</b>	<b>47,353</b>

Final actual enrolment: 106,242 (5.29% below quota)

Final projected enrolment: 118,828 (1.70% above quota)

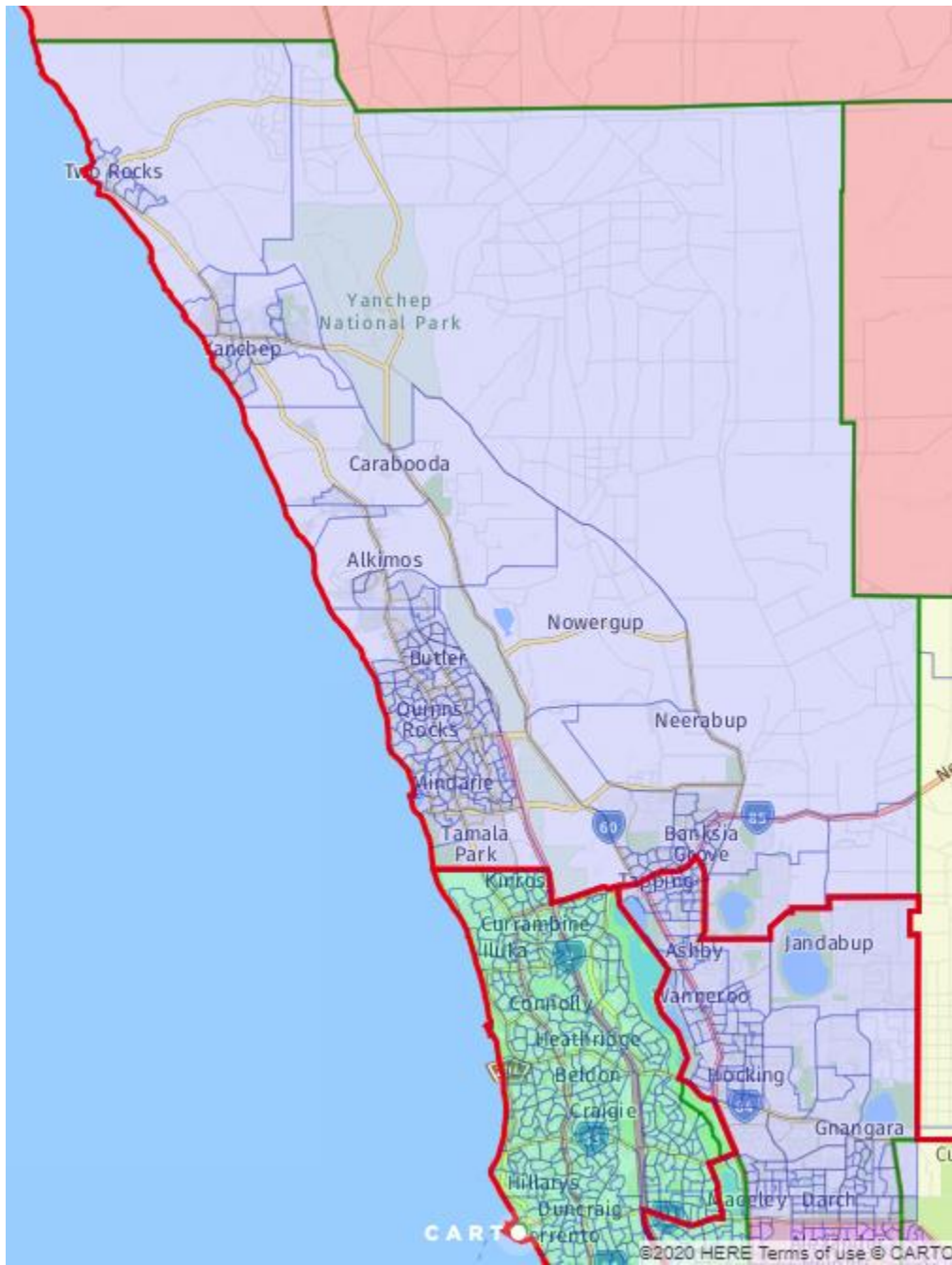
Maps:

Figure 2.15.1 Division of Pearce



 Existing Boundary  Suggested Division

Figure 2.15.2 Division of Pearce (suggested division)



 Existing Boundary  Suggested Division



## 2.16 DIVISION OF STIRLING

**Opening actual enrolment:** 103,123 (8.07% below quota)

**Opening projected enrolment:** 104,440 (10.61% below quota)

**Comment:** After transfers to Perth and net transfers to Curtin, the Division needs to add electors.

With the northern part of Cowan transferred to the reconfigured Division of Pearce as outlined in section 2.15, and the Joondalup LGA portion transferred to Moore as suggested in section 2.14, the bulk of the remaining division (south of Hepburn Ave and west of Tonkin Hwy) can be transferred to Stirling.

While shifted north and extending further inland, the resulting Division of Stirling continues to be a well-defined and contiguous slice of the northern metropolitan area.

### Suggested Transfers:

<b>Stirling to Curtin</b>		Actual	Projected
Stirling - Osborne Park	(all SA1s south of Karrinyup Rd)	5,291	5,245
Tuart Hill - Joondanna	(whole)	8,189	8,080
<b>Stirling to Curtin Total</b>		<b>13,480</b>	<b>13,325</b>
<b>Stirling to Perth</b>		Actual	Projected
Dianella	(all SA1s south of Morley Dr)	8,945	8,995
Morley	(balance)	533	531
Yokine - Coolbinia - Menora	(balance)	8,374	8,158
<b>Stirling to Perth Total</b>		<b>17,852</b>	<b>17,684</b>
<b>Cowan to Stirling</b>		Actual	Projected
Alexander Heights - Koondoola	(whole)	7,806	7,932
Ballajura	(all SA1s except 5105632)	12,730	12,968
Girrawheen	(whole)	5,481	5,394
Malaga	(whole)	4	4
Marangaroo	(whole)	7,169	7,203
<b>Cowan to Stirling Total</b>		<b>33,190</b>	<b>33,501</b>
<b>Curtin to Stirling</b>		Actual	Projected
Innaloo - Doubleview	(all SA1s north of both Scarborough Beach Rd and Beatrice St / Cedric St)	7,156	7,267
Scarborough	(all SA1s north of Scarborough Beach Rd)	1,235	1,311
<b>Curtin to Stirling Total</b>		<b>8,391</b>	<b>8,578</b>

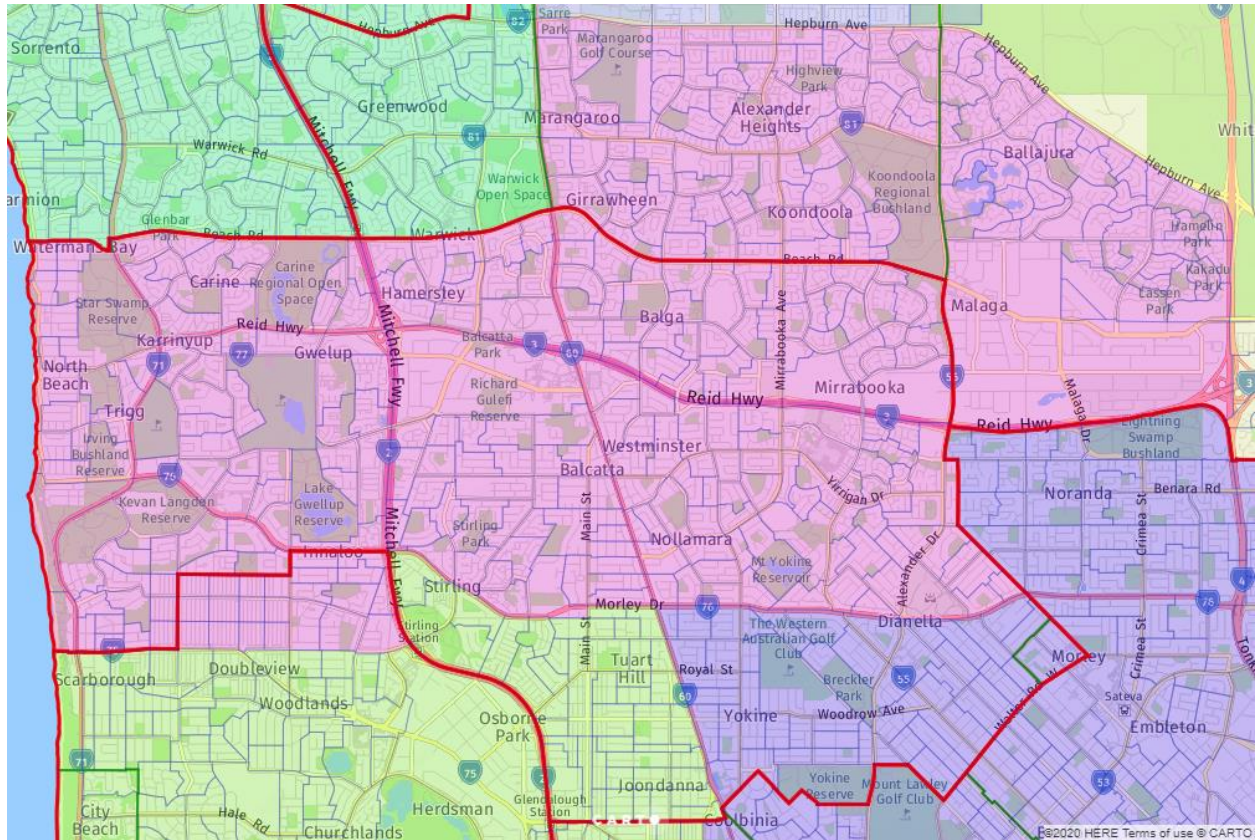
**Final actual enrolment:** 113,372 (1.07% above quota)

**Final projected enrolment:** 115,510 (1.14% below quota)



## Maps:

Figure 2.16.1 Division of Stirling



 Existing Boundary  Suggested Division

## 2.17 DIVISION OF HASLUCK

Opening actual enrolment: 100,732 (10.20% below quota)

Opening projected enrolment: 103,715 (11.23% below quota)

**Comment:** As outlined in sections 1.1.2, 1.1.4 and 2.15, this division emerges out of a partition of the former division, largely along the Helena River. The exception is retention of the south of the river portion of the Swan LGA (Hazelmere – Guildford) that is currently in the division.

The partition creates two well-defined groupings of six divisions among the twelve “Metro plus Mandurah” divisions that emerge from thirteen metropolitan and hybrid metro-rural divisions in the previous configuration.

The division is brought back to a full quota with transfers from Pearce and Cowan of most (by area) of the rest of the Swan LGA, the exception being most of Ballajura and Malaga, which are suggested to be included in the Division of Stirling.

The result is a well-defined division comprising the north-eastern portion of the metropolitan area.

### Suggested Transfers:

<b>Hasluck to Burt</b>		Actual	Projected
Forrestfield - Wattle Grove	(all SA1s east of Tonkin Hwy)	9,296	9,091
Kalamunda - Maida Vale - Gooseberry Hi	(whole)	11,505	11,527
Lesmurdie - Bickley - Carmel	(portion currently in Hasluck)	7,515	7,811
Malmalling - Reservoir	(part* of SA1 5105201 south-west of Mundaring Weir)	-	-
Perth Airport	(partial SA1 currently in Hasluck)	-	-
<b>Hasluck to Burt Total</b>		<b>28,316</b>	<b>28,429</b>

\*assumed to contain none of the 9 actual and projected electors in the SA1

<b>Hasluck to Swan</b>		Actual	Projected
Beckenham - Kenwick - Langford	(portion currently in Hasluck)	8,243	8,538
Cannington - Queens Park	(partial SA1 currently in Hasluck)	-	-
Forrestfield - Wattle Grove	(portion currently in Hasluck and west of Tonkin Hwy)	3,049	3,535
Maddington - Orange Grove - Martin	(portion currently in Hasluck)	6,989	7,299
Welshpool	(partial SA1 currently in Hasluck)	-	-
<b>Hasluck to Swan Total</b>		<b>18,281</b>	<b>19,372</b>

<b>Cowan to Hasluck</b>		Actual	Projected
Ballajura	(SA1 5105632)	39	27
Beechboro	(portion currently in Cowan)	9,533	9,496
Lockridge - Kiara	(portion currently in Cowan)	3,537	3,363
<b>Cowan to Hasluck Total</b>		<b>13,109</b>	<b>12,886</b>

<b>Pearce to Hasluck</b>		Actual	Projected
Avon Valley National Park	(whole)	5	5
Beechboro	(portion currently in Pearce)	2,915	3,722
Bullsbrook	(whole)	3,618	3,993
Ellenbrook	(whole)	25,183	29,845
Gidgegannup	(balance)	24	26
Lockridge - Kiara	(portion currently in Pearce)	13	19
Melaleuca - Lexia	(whole)	2	2
Middle Swan - Herne Hill	(balance)	1,509	1,529
Stratton - Jane Brook	(partial SA1 currently in Pearce)	-	-
The Vines	(whole)	7,604	9,100
Walyunga National Park	(whole)	1	1
Wanneroo	(partial SA1 currently in Pearce)	23	27
<b>Pearce to Hasluck Total</b>		<b>40,897</b>	<b>48,269</b>

<b>Swan to Hasluck</b>		Actual	Projected
Hazlemere - Guildford	(portion of SA1 5106104 that is currently in Swan)	-	-
<b>Swan to Hasluck Total</b>		-	-

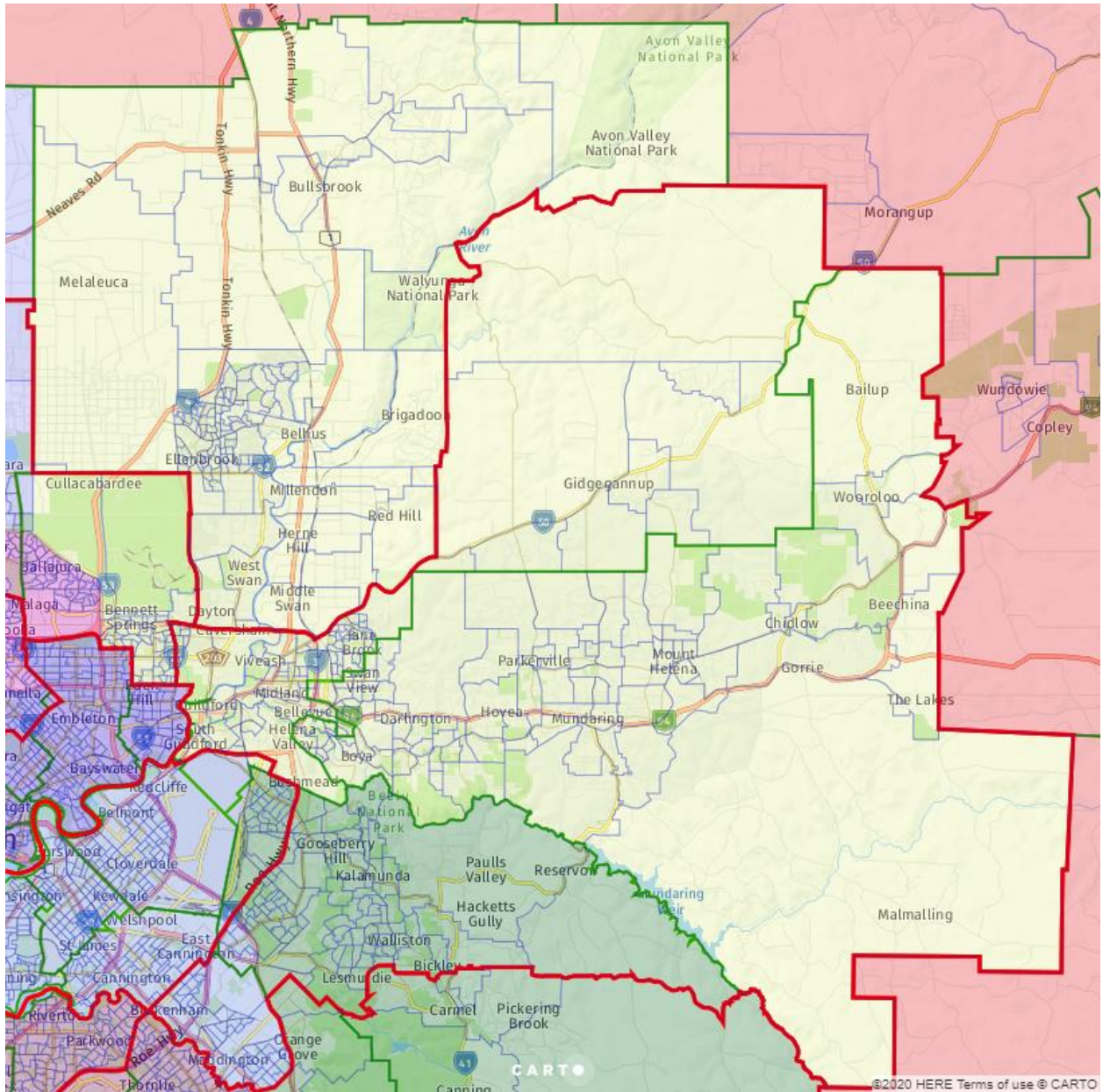
**Final actual enrolment:** 108,141 (3.59% below quota)

**Final projected enrolment:** 117,069 (0.20% above quota)



## Maps:

Figure 2.17.1 Division of Hasluck



 Existing Boundary  Suggested Division

## 2.18 FORMER DIVISION OF COWAN

Opening actual enrolment: 100,543 (10.37% below quota)

Opening projected enrolment: 104,250 (10.77% below quota)

**Comment:** As discussed in section 1.2, while several divisions are suggested to be significantly re-drawn to the point where naming is not automatic, it is the existing Division of Cowan that most clearly lacks a counterpart in the new configuration and is therefore suggested as the division to be officially abolished.

### Suggested Transfers:

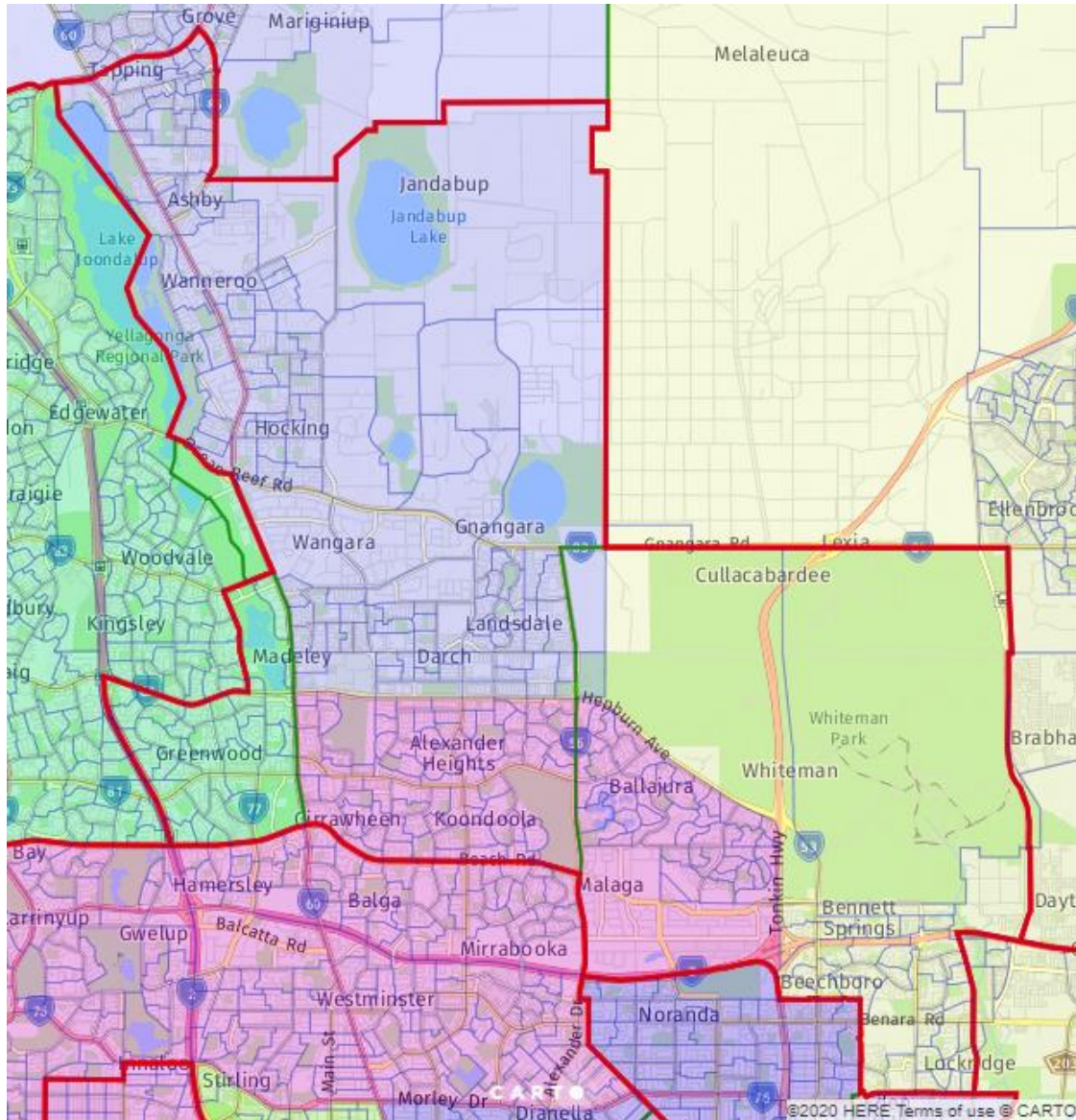
<b>Cowan to Hasluck</b>		Actual	Projected
Ballajura	(SA1 5105632)	39	27
Beechboro	(portion currently in Cowan)	9,533	9,496
Lockridge - Kiara	(portion currently in Cowan)	3,537	3,363
<b>Cowan to Hasluck Total</b>		<b>13,109</b>	<b>12,886</b>
<b>Cowan to Moore</b>		Actual	Projected
Greenwood - Warwick	(balance)	9,619	9,747
Kingsley	(balance)	780	763
<b>Cowan to Moore Total</b>		<b>10,399</b>	<b>10,510</b>
<b>Cowan to Pearce</b>		Actual	Projected
Joondalup - Edgewater	(partial SA1 currently in Cowan)	-	-
Madeley - Darch - Landsdale	(whole)	18,088	20,464
Tapping - Ashby - Sinagra	(balance)	7,750	8,133
Wanneroo	(portion currently in Cowan)	18,007	18,756
Woodvale	(partial SA1 currently in Cowan)	-	-
<b>Cowan to Pearce Total</b>		<b>43,845</b>	<b>47,353</b>
<b>Cowan to Stirling</b>		Actual	Projected
Alexander Heights - Koondoola	(whole)	7,806	7,932
Ballajura	(all SA1s except 5105632)	12,730	12,968
Girrawheen	(whole)	5,481	5,394
Malaga	(whole)	4	4
Marangaroo	(whole)	7,169	7,203
<b>Cowan to Stirling Total</b>		<b>33,190</b>	<b>33,501</b>


Final actual enrolment: Nil

Final projected enrolment: Nil

## Maps:

Figure 2.18.1 Division of Cowan (former boundary)



 Existing Boundary     Suggested Divisions

### 3 NET TRANSFERS BY DIVISION

#### 3.1 TRANSFERS OF ACTUAL ENROLMENT

Division	Unadjusted			Adjusted Actual	Variance from Quota
	Actual	Outflows	Inflows		
Brand	110,508	(44,588)	40,447	106,367	(5.18%)
Burt	109,053	(62,720)	61,870	108,203	(3.54%)
Canning	110,091	(42,689)	44,588	111,990	(0.16%)
Cowan	100,543	(100,543)		0	(100.00%)
Curtin	101,848	(8,391)	21,335	114,792	2.34%
Durack	98,382		22,194	120,576	7.49%
Forrest	107,326	(11,585)	17,440	113,181	0.90%
Fremantle	109,269	(44,043)	51,624	116,850	4.17%
Hasluck	100,732	(46,597)	54,006	108,141	(3.59%)
Moore	102,441		10,399	112,840	0.60%
O'Connor	101,985		11,585	113,570	1.25%
Pearce	125,488	(63,091)	43,845	106,242	(5.29%)
Perth	104,026	(7,855)	17,852	114,023	1.65%
Stirling	103,123	(31,332)	41,581	113,372	1.07%
Swan	102,932	(8,305)	18,281	112,908	0.66%
Tangney	94,827	(51,624)	66,316	109,519	(2.37%)
	1,682,574	(523,363)	523,363	1,682,574	



### 3.2 TRANSFERS OF PROJECTED ENROLMENT

Division	Unadjusted			Adjusted Projection	Variance from Quota
	Projection	Outflows	Inflows		
Brand	119,561	(49,432)	43,313	113,442	(2.91%)
Burt	116,511	(64,890)	66,144	117,765	0.79%
Canning	117,835	(47,518)	49,432	119,749	2.49%
Cowan	104,250	(104,250)		0	(100.00%)
Curtin	105,373	(8,578)	21,500	118,295	1.25%
Durack	95,524		22,747	118,271	1.23%
Forrest	113,971	(12,953)	18,179	119,197	2.02%
Fremantle	115,628	(47,985)	52,541	120,184	2.86%
Hasluck	103,715	(47,801)	61,155	117,069	0.20%
Moore	104,031		10,510	114,541	(1.97%)
O'Connor	101,703		12,953	114,656	(1.87%)
Pearce	142,491	(71,016)	47,353	118,828	1.70%
Perth	106,518	(8,175)	17,684	116,027	(0.69%)
Stirling	104,440	(31,009)	42,079	115,510	(1.14%)
Swan	105,211	(8,376)	19,372	116,207	(0.54%)
Tangney	95,804	(52,541)	69,562	112,825	(3.43%)
	1,752,566	(554,524)	554,524	1,752,566	

## APPENDIX A – LIST OF TRANSFERRED SA1S

Note – partial SA1s have their existing division included as part of the name. In a handful of cases an SA1 has been further split into “A” and “B” segments with an assumed population split.

Division / SA2 SA1	Sum of actual_enrolment	Sum of projected_enrolment
<b>Brand to Canning</b>		
<b>Baldivis</b>		
5118501	1	1
5118506	241	292
5118508	173	187
5118509	652	742
5118510	902	1,398
5118511	2,050	2,334
5118512	259	245
5118513A	244	249
5118516	188	194
5118517	363	375
5118518	258	282
5118519	260	292
5118520	259	274
5118521	410	497
5118525	277	311
5118527	927	1,004
5118528	386	466
5118529	361	349
5118531	235	241
5118532	283	339
5118534	191	233
5118535	336	353
5118536	257	333
5118538	355	472
5118539	284	294
5118540	418	428
5118541	503	612
5118543	523	666
5118545	308	339
5118550	471	599
5118552	347	440
5118553	11	11
5118554	253	324
5118556	219	244
5118557	616	946

Division / SA2 SA1	Sum of actual_enrolment	Sum of projected_enrolment
5118558	331	331
5118559	208	196
5118560	884	1,061
5118561	718	951
<b>Baldivis Total</b>	<b>15,962</b>	<b>18,905</b>
<b>Port Kennedy</b>		
5118701	165	135
5118702	197	222
5118703	227	272
5118704	299	276
5118705	281	249
5118706	128	126
5118707	345	313
5118708	182	174
5118709	275	274
5118710	258	278
5118711	252	252
5118713	281	289
5118714	241	253
5118715	255	217
5118716	233	234
5118717	326	328
5118718	328	262
5118719	322	317
5118720	267	300
5118722	3	3
5118723	63	63
5118724	27	29
5118725	205	231
5118726	230	262
5118727	192	214
5118728	198	210
5118729	215	235
5118730	233	251
5118731	194	219
5118732	315	327
5118734	321	315
5118735	174	173
5118736	169	153
5118737	227	253
5118738	296	297
5118739	250	262
5118740	289	267

Division / SA2 SA1	Sum of actual_enrolment	Sum of projected_enrolment
<b>Port Kennedy Total</b>	<b>8,463</b>	<b>8,535</b>
<b>Rockingham Lakes</b>		
5118903B	-	-
<b>Rockingham Lakes Total</b>	-	-
<b>Singleton - Golden Bay - Secret Harbour</b>		
5119102	260	290
5119103	392	382
5119104	300	291
5119105	212	221
5119106	279	300
5119107	1,104	1,611
5119108	196	204
5119109	333	372
5119114	327	372
5119115	189	206
5119117	636	743
5119118	385	405
5119119	237	212
5119120	470	516
5119122	862	1,242
5119123	199	208
5119124	395	398
5119125	322	385
5119126	372	375
5119128	296	305
5119129	510	550
5119130	382	459
5119131	310	385
5119132	211	274
5119133	176	183
5119134	284	291
5119135	243	300
5119136	281	322
5119137	337	383
5119138	191	199
5119139	186	188
5119140	161	165
5119141	244	227
5119142	387	369
5119143	297	316
5119144	230	250
5119145	297	282
5119146	212	228



Division / SA2 SA1	Sum of actual_enrolment	Sum of projected_enrolment
5119147	264	274
<b>Singleton - Golden Bay - Secret Harbour</b>	<b>12,969</b>	<b>14,683</b>
<b>Warnbro</b>		
5119301	259	298
5119302	301	336
5119303	232	233
5119304	199	191
5119305	355	397
5119306	183	185
5119307	266	256
5119308	200	171
5119309	288	314
5119310	328	307
5119311	217	227
5119312	196	206
5119313	152	140
5119314	329	371
5119315	196	171
5119316	223	246
5119317	259	273
5119318	194	197
5119319	157	153
5119320	212	236
5119321	244	245
5119322	334	335
5119323	273	253
5119324	276	321
5119325	404	424
5119326	354	293
5119327	293	280
5119328	270	250
<b>Warnbro Total</b>	<b>7,194</b>	<b>7,309</b>
<b>Brand to Canning Total</b>	<b>44,588</b>	<b>49,432</b>
<b>Burt to Tangney</b>		
<b>Beckenham - Kenwick - Langford</b>		
5113201	209	186
5113202	233	236
5113214	275	264
5113215	184	191
5113216	197	197
5113217	387	414
5113218	318	297
5113226	363	373

Division / SA2 SA1	Sum of actual_enrolment	Sum of projected_enrolment
5113227	204	168
5113228	179	184
5113229	183	194
5113243	157	153
5113245	222	259
5113246	166	179
<b>Beckenham - Kenwick - Langford Total</b>	<b>3,277</b>	<b>3,295</b>
<b>Canning Vale - East</b>		
5113301	205	227
5113303	259	281
5113305	428	486
5113306	248	257
5113307	273	286
5113309	262	247
5113310	382	352
5113311	282	287
5113312	296	363
5113313	343	381
5113316	338	342
5113317	336	399
5113322	356	371
5113323	270	279
5113324	621	679
5113325	294	367
5113326	235	263
5113327	236	240
5113328	316	309
5113329	189	198
5113331	394	373
5113332	186	223
5113334	-	-
5113335	1	1
5113336	103	121
5113337	211	204
5113338	175	172
5113339	220	245
5113340	316	275
5113341	128	154
5113342	222	273
5113343	429	472
5113344	159	178
5113345	228	262
5113346	158	152

Division / SA2 SA1	Sum of actual_enrolment	Sum of projected_enrolment
5113347	202	199
5113348	368	391
5113349	225	262
5113350	140	127
5113351	221	222
5113352	173	172
5113353	216	225
5113354	212	228
5113355	280	308
5113356	276	253
5113357	362	395
5113358	408	445
5113359	248	293
5113360	258	284
5113361	225	248
<b>Canning Vale - East Total</b>	<b>12,913</b>	<b>13,771</b>
<b>Canning Vale - West</b>		
5112501	220	205
5112502	231	237
5112504	392	366
5112505	235	243
5112506	336	326
5112507	278	275
5112509	244	242
5112510	192	206
5112511	260	224
5112512	272	278
5112513	236	265
5112514	242	247
5112515	233	237
5112516	137	150
5112517	431	456
5112518	183	189
5112519	352	368
5112520	239	246
5112521	229	250
5112522	346	358
5112524	176	172
5112525	297	306
5112526	339	357
5112527	148	163
5112528	158	181
5112529	127	160

Division / SA2 SA1	Sum of actual_enrolment	Sum of projected_enrolment
<b>Canning Vale - West Total</b>	<b>6,533</b>	<b>6,707</b>
<b>Canning Vale Commercial</b>		
5112601	1	1
<b>Canning Vale Commercial Total</b>	<b>1</b>	<b>1</b>
<b>Gosnells</b>		
5113401	162	163
5113402	231	220
5113403	346	324
5113404	161	144
5113405	269	225
5113406	246	288
5113407	191	175
5113408	286	235
5113409	278	314
5113410	194	194
5113411	342	324
5113412	280	302
5113413	252	272
5113415	-	-
5113417	231	230
5113418	286	253
5113419	163	172
5113420	350	359
5113421	443	423
5113422	261	254
5113423	106	101
5113424	380	362
5113425	323	322
5113426	266	233
5113427	268	265
5113428	196	228
5113429	204	219
5113430	202	180
5113431	151	180
5113432	257	261
5113434	300	314
5113435	195	193
5113436	455	404
5113437	196	175
5113438	359	383
5113439	294	271
5113440	277	305
5113442	435	355



Division / SA2 SA1	Sum of actual_enrolment	Sum of projected_enrolment
5113443	318	306
5113444	279	230
5113445	279	263
5113446	274	255
5113447	224	245
5113448	302	366
5113449	227	240
5113450	217	211
5113451	266	249
5113452	166	200
5113453	234	281
5113454	293	303
<b>Gosnells Total</b>	<b>12,915</b>	<b>12,771</b>
<b>Huntingdale - Southern River</b>		
5113501	327	295
5113502	318	342
5113503	458	584
5113504	481	488
5113505	410	446
5113507	350	362
5113508	329	345
5113509	324	349
5113510	309	299
5113511	317	263
5113512	418	406
5113513	409	380
5113514	416	392
5113515	457	469
5113517	248	225
5113518	310	298
5113519	245	292
5113520	135	133
5113521	300	328
5113523	339	354
5113524	249	240
5113525	833	1,230
5113527	306	300
5113528	786	1,173
5113529	4	4
5113530	249	285
5113531	202	236
5113532	546	676
5113533	297	294

<b>Division / SA2 SA1</b>	<b>Sum of actual_enrolment</b>	<b>Sum of projected_enrolment</b>
5113534	193	295
5113535	931	1,077
5113536	220	248
5113537	218	230
5113538	270	297
<b>Huntingdale - Southern River Total</b>	<b>12,204</b>	<b>13,635</b>
<b>Thornlie</b>		
5113701	187	185
5113702	266	258
5113703	238	219
5113704	332	312
5113705	277	300
5113706	306	267
5113707	189	182
5113708	363	323
5113709	381	353
5113710	212	199
5113711	290	349
5113712	306	359
5113713	313	265
5113714	178	188
5113715	243	248
5113716	243	241
5113717	255	261
5113718	301	324
5113719	367	357
5113720	149	138
5113721	306	306
5113722	162	166
5113723	306	275
5113724	358	330
5113725	221	231
5113726	339	309
5113727	207	228
5113728	263	290
5113729	231	231
5113730	227	229
5113731	333	331
5113732	263	276
5113733	136	142
5113734	250	238
5113735	215	216
5113736	397	393

Division / SA2 SA1	Sum of actual_enrolment	Sum of projected_enrolment
5113737	206	194
5113738	201	219
5113739	304	306
5113740	242	216
5113741	244	231
5113742	251	216
5113743	227	228
5113744	228	251
5113745	210	231
5113746	158	162
5113747	203	172
5113748	372	346
5113749	299	255
5113750	257	231
5113751	293	267
5113752	163	151
5113753	167	165
5113754	172	187
5113755	328	311
5113756	133	137
5113757	236	252
5113758	373	463
5113759	-	-
<b>Thornlie Total</b>	<b>14,877</b>	<b>14,710</b>
<b>Burt to Tangney Total</b>	<b>62,720</b>	<b>64,890</b>
<b>Canning to Burt</b>		
<b>Armadale - Wungong - Brookdale</b>		
5111043_CANNING	297	658
<b>Armadale - Wungong - Brookdale Total</b>	<b>297</b>	<b>658</b>
<b>Ashendon - Lesley</b>		
5111101	1	1
<b>Ashendon - Lesley Total</b>	<b>1</b>	<b>1</b>
<b>Byford</b>		
5114201	410	471
5114205	333	317
5114206	385	348
5114207	198	177
5114208	552	597
5114210	195	232
5114211	659	876
5114212	132	153
5114213	376	536
5114214	417	522

Division / SA2 SA1	Sum of actual_enrolment	Sum of projected_enrolment
5114215	306	403
5114216	451	551
5114217	231	297
5114218	588	719
5114219	240	318
5114220	379	392
5114221	360	357
5114222	398	409
5114223	469	602
5114224	182	191
5114225	251	327
5114226	429	629
5114227	655	1,055
5114228	404	514
5114229	744	937
5114230	442	567
5114231	-	-
5114232	420	494
5114233	219	241
5114234	523	806
5114235	14	16
<b>Byford Total</b>	<b>11,362</b>	<b>14,054</b>
<b>Lesmurdie - Bickley - Carmel</b>		
5114101	10	10
5114102	111	124
5114116	227	248
5114123_CANNING	162	198
5114129_CANNING	210	205
5114130	218	232
<b>Lesmurdie - Bickley - Carmel Total</b>	<b>938</b>	<b>1,017</b>
<b>Maddington - Orange Grove - Martin</b>		
5113605	142	140
5113619	266	268
5113623	160	168
5113624	230	251
5113626	243	261
5113628	636	722
<b>Maddington - Orange Grove - Martin Total</b>	<b>1,677</b>	<b>1,810</b>
<b>Mount Nasura - Mount Richon - Bedforddale</b>		
5111501	116	110
5111503	259	261
5111504	317	340
5111506	480	552



Division / SA2 SA1	Sum of actual_enrolment	Sum of projected_enrolment
5111507	462	494
5111508	346	372
5111509	-	-
5111517	523	542
5111518	114	121
5111519	221	218
5111520	558	694
5111521	293	304
<b>Mount Nasura - Mount Richon -</b>	<b>3,689</b>	<b>4,008</b>
<b>Mundijong</b>		
5114307	238	275
5114308	368	423
5114309	243	244
5114310	242	315
5114311	363	412
5114312	543	647
<b>Mundijong Total</b>	<b>1,997</b>	<b>2,316</b>
<b>Roleystone</b>		
5111601	174	169
5111602	171	170
5111603	360	340
5111604	212	236
5111605_CANNING	254	277
5111606	308	312
5111607	201	228
5111608	370	422
5111609	180	191
5111610	399	425
5111611	320	325
5111612	443	412
5111613	354	402
5111614	221	254
5111615	511	537
5111616	340	319
5111617	213	207
5111618	257	249
<b>Roleystone Total</b>	<b>5,288</b>	<b>5,475</b>
<b>Canning to Burt Total</b>	<b>25,249</b>	<b>29,339</b>
<b>Canning to Forrest</b>		
<b>Mundijong</b>		
5114301	186	209
5114302	257	257
5114303	258	305

Division / SA2 SA1	Sum of actual_enrolment	Sum of projected_enrolment
5114304	397	435
5114305	441	450
5114306	597	635
5114313	344	397
5114314	253	280
5114315	215	212
<b>Mundijong Total</b>	<b>2,948</b>	<b>3,180</b>
<b>Murray</b>		
5124801	231	237
5124802	297	289
5124803	286	289
5124804	148	151
5124806_CANNING	96	100
5124807_CANNING	252	256
5124808	51	1
5124809	283	293
<b>Murray Total</b>	<b>1,644</b>	<b>1,616</b>
<b>Pinjarra</b>		
5102901	316	309
5102904	126	133
5102905	130	113
5102907	225	224
5102909	352	286
5102910	522	567
5102912	311	343
5102913	312	305
5102914	475	513
5102915	325	308
5102916	314	324
5102917	244	282
5102919	372	431
5102920	81	83
5102921	172	175
5102922	245	281
5102923	507	591
5102924	358	340
5102925	271	302
5102926	-	-
5102927	3	3
5102928	251	285
5102929	298	274
5102930	132	117
5102931	203	186

Division / SA2 SA1	Sum of actual_enrolment	Sum of projected_enrolment
5102932	337	378
<b>Pinjarra Total</b>	<b>6,882</b>	<b>7,153</b>
<b>Serpentine - Jarrahdale</b>		
5114401	3	3
5114402	207	227
5114403	300	313
5114404	309	316
5114405	205	223
5114406	398	440
5114407	254	270
5114408	192	216
5114409	225	211
5114410	53	53
5114411	307	320
5114412	258	254
5114413	294	339
<b>Serpentine - Jarrahdale Total</b>	<b>3,005</b>	<b>3,185</b>
<b>Waroona</b>		
5101601	203	202
5101602	363	429
5101603	151	146
5101604	172	189
5101605	258	225
5101606	171	164
5101607	381	379
5101608_CANNING	502	523
5101609	179	204
5101610	2	2
5101611	377	395
5101612	202	187
<b>Waroona Total</b>	<b>2,961</b>	<b>3,045</b>
<b>Canning to Forrest Total</b>	<b>17,440</b>	<b>18,179</b>
<b>Canning to O'Connor</b>		
<b>Brookton</b>		
5124606_CANNING	-	-
<b>Brookton Total</b>	-	-
<b>Canning to O'Connor Total</b>	-	-
<b>Cowan to Hasluck</b>		
<b>Ballajura</b>		
5105632	39	27
<b>Ballajura Total</b>	<b>39</b>	<b>27</b>
<b>Beechboro</b>		
5105701	177	162

Division / SA2 SA1	Sum of actual_enrolment	Sum of projected_enrolment
5105702	342	339
5105703	314	317
5105704	346	361
5105707	241	244
5105708	360	348
5105709_COWAN	6	6
5105710	332	307
5105711	161	120
5105712	191	178
5105713	216	220
5105715	350	372
5105716	314	324
5105717	285	303
5105718	318	317
5105719	289	294
5105720	349	383
5105721	198	199
5105722	229	231
5105723	380	303
5105724	366	346
5105725	324	311
5105727	371	359
5105728	184	177
5105729	397	437
5105730	268	263
5105733_COWAN	187	247
5105734	196	210
5105735	227	224
5105736	182	180
5105737	245	253
5105738	345	364
5105739	277	237
5105740	331	305
5105741	235	255
<b>Beechboro Total</b>	<b>9,533</b>	<b>9,496</b>
<b>Lockridge - Kiara</b>		
5106208	194	201
5106209	306	299
5106210	189	184
5106211	198	180
5106212	268	231
5106213	239	238
5106214	180	157



<b>Division / SA2 SA1</b>	<b>Sum of actual_enrolment</b>	<b>Sum of projected_enrolment</b>
5106215	408	373
5106216	408	395
5106217	461	462
5106218	295	256
5106220	391	387
<b>Lockridge - Kiara Total</b>	<b>3,537</b>	<b>3,363</b>
<b>Cowan to Hasluck Total</b>	<b>13,109</b>	<b>12,886</b>
<b>Cowan to Moore</b>		
<b>Greenwood - Warwick</b>		
5107301	315	304
5107302	300	363
5107303	332	385
5107304	347	353
5107305	312	290
5107306	186	201
5107307	242	275
5107308	383	384
5107309	229	248
5107310	408	406
5107311	396	371
5107312	191	201
5107313	146	165
5107314	339	358
5107315	247	235
5107316	255	264
5107317	362	378
5107318	234	223
5107319	342	311
5107320	297	292
5107321	428	406
5107322	152	150
5107323	285	260
5107324	251	253
5107325_COWAN	208	192
5107326	253	282
5107327_COWAN	294	288
5107328_COWAN	246	252
5107329_COWAN	218	243
5107330	221	222
5107331_COWAN	341	282
5107332_COWAN	244	258
5107333	-	-
5107334	215	195

Division / SA2 SA1	Sum of actual_enrolment	Sum of projected_enrolment
5107335	400	457
<b>Greenwood - Warwick Total</b>	<b>9,619</b>	<b>9,747</b>
<b>Kingsley</b>		
5107826	4	4
5107833	444	419
5107834	198	201
5107835	134	139
<b>Kingsley Total</b>	<b>780</b>	<b>763</b>
<b>Cowan to Moore Total</b>	<b>10,399</b>	<b>10,510</b>
<b>Cowan to Pearce</b>		
<b>Joondalup - Edgewater</b>		
5107734_COWAN	-	-
<b>Joondalup - Edgewater Total</b>	<b>-</b>	<b>-</b>
<b>Madeley - Darch - Landsdale</b>		
5110303	13	13
5110304	2	2
5110305	-	-
5110306	321	315
5110307	255	267
5110308	381	394
5110309	322	353
5110310	288	327
5110311	216	266
5110312	287	316
5110313	307	293
5110314	436	465
5110315	377	395
5110316	273	272
5110317	29	47
5110318	26	26
5110319	302	302
5110320	202	205
5110321	300	277
5110322	323	302
5110323	352	305
5110324	457	437
5110326	423	470
5110328	264	254
5110329	351	377
5110334	394	411
5110335	318	353
5110336	-	-
5110337	341	340

Division / SA2 SA1	Sum of actual_enrolment	Sum of projected_enrolment
5110338	402	526
5110339	375	442
5110340	175	194
5110341	364	359
5110342	260	301
5110343	575	822
5110344	609	750
5110345	209	224
5110346	371	396
5110347	347	380
5110348	455	495
5110349	438	546
5110350	270	300
5110351	258	279
5110352	624	970
5110353	319	347
5110354	373	413
5110355	-	-
5110356	522	668
5110357	727	1,055
5110358	284	324
5110359	411	383
5110360	216	242
5110361	220	220
5110362	510	740
5110363	181	180
5110364	401	434
5110365	349	382
5110366	283	308
<b>Madeley - Darch - Landsdale Total</b>	<b>18,088</b>	<b>20,464</b>
<b>Tapping - Ashby - Sinagra</b>		
5110701	320	333
5110703	222	166
5110707	344	347
5110708	350	384
5110709	374	349
5110710	220	211
5110711	431	534
5110712	198	206
5110713	245	257
5110714	246	229
5110719	348	361
5110720	302	310

Division / SA2 SA1	Sum of actual_enrolment	Sum of projected_enrolment
5110721	368	386
5110722	387	409
5110723	357	370
5110724	157	140
5110726	195	202
5110727	186	198
5110728	288	305
5110729	258	241
5110730	303	294
5110731	246	311
5110732	246	260
5110733	271	309
5110734	223	249
5110735	179	184
5110736	239	277
5110737	247	311
<b>Tapping - Ashby - Sinagra Total</b>	<b>7,750</b>	<b>8,133</b>
<b>Wanneroo</b>		
5110801	247	264
5110802	202	196
5110803	-	-
5110806	278	289
5110807	254	254
5110808	158	157
5110810	340	377
5110811	397	386
5110812	358	368
5110813	350	339
5110814	404	437
5110816	200	194
5110817	350	346
5110818	189	176
5110819	425	387
5110820	696	787
5110821	324	264
5110822	187	179
5110823	349	374
5110824	274	276
5110825	213	234
5110826	167	177
5110828	309	297
5110829	351	309
5110830	227	201



Division / SA2 SA1	Sum of actual_enrolment	Sum of projected_enrolment
5110831	368	308
5110832	295	303
5110833	375	357
5110834	452	434
5110835	325	296
5110837	328	374
5110838	184	224
5110839	307	277
5110840_COWAN	224	267
5110841	454	479
5110842	401	410
5110843	308	334
5110844	555	614
5110845	214	221
5110846	258	292
5110847	295	295
5110848	323	339
5110849	381	365
5110850	421	506
5110851	208	244
5110852	372	353
5110853	659	747
5110854	41	48
5110855	441	533
5110856	316	349
5110857	490	516
5110858	279	312
5110859	564	696
5110860	279	319
5110861	243	247
5110862	108	110
5110863	290	319
<b>Wanneroo Total</b>	<b>18,007</b>	<b>18,756</b>
<b>Woodvale</b>		
5108326_COWAN	-	-
<b>Woodvale Total</b>	<b>-</b>	<b>-</b>
<b>Cowan to Pearce Total</b>	<b>43,845</b>	<b>47,353</b>
<b>Cowan to Stirling</b>		
<b>Alexander Heights - Koondoola</b>		
5109801	356	366
5109802	307	290
5109803	303	350
5109804	214	176

Division / SA2 SA1	Sum of actual_enrolment	Sum of projected_enrolment
5109805	279	263
5109806	236	229
5109807	217	196
5109808	243	240
5109809	167	193
5109810	328	347
5109811	233	223
5109812	140	150
5109813	182	177
5109814	325	335
5109815	284	284
5109816	198	214
5109817	258	281
5109818	-	-
5109819	300	299
5109820	389	409
5109821	356	320
5109822	341	398
5109823	368	405
5109824	308	289
5109825	325	337
5109826	140	126
5109827	335	330
5109828	361	369
5109829	313	336
<b>Alexander Heights - Koondoola Total</b>	<b>7,806</b>	<b>7,932</b>
<b>Ballajura</b>		
5105601	131	122
5105602	225	253
5105603	207	220
5105604	150	191
5105605	254	271
5105606	226	272
5105607	353	315
5105608	381	429
5105609	149	158
5105610	237	221
5105611	209	185
5105612	166	172
5105613	346	330
5105614	277	273
5105615	177	188
5105616	280	306

Division / SA2 SA1	Sum of actual_enrolment	Sum of projected_enrolment
5105617	283	305
5105618	292	289
5105619	417	426
5105620	266	258
5105621	233	262
5105622	269	241
5105623	288	278
5105624	179	172
5105625	305	316
5105626	300	333
5105627	296	318
5105628	333	358
5105629	276	283
5105630	213	190
5105631	246	202
5105633	288	288
5105634	273	315
5105635	281	294
5105636	254	288
5105637	407	411
5105638	211	174
5105639	255	319
5105640	215	201
5105641	386	409
5105642	230	203
5105643	219	221
5105644	189	190
5105645	231	225
5105646	424	423
5105647	214	214
5105648	298	290
5105649	159	171
5105650	-	-
5105651	232	195
<b>Ballajura Total</b>	<b>12,730</b>	<b>12,968</b>
<b>Girrawheen</b>		
5110201	270	224
5110202	454	514
5110203	160	171
5110204	294	286
5110205	198	208
5110206	168	164
5110207	227	258

<b>Division / SA2 SA1</b>	<b>Sum of actual_enrolment</b>	<b>Sum of projected_enrolment</b>
5110208	253	211
5110209	202	205
5110210	177	132
5110211	240	223
5110212	253	263
5110213	267	317
5110214	280	273
5110215	231	195
5110216	276	276
5110217	230	239
5110218	291	259
5110219	318	313
5110220	292	300
5110221	157	147
5110222	243	216
<b>Girrawheen Total</b>	<b>5,481</b>	<b>5,394</b>
<b>Malaga</b>		
5106301	4	4
<b>Malaga Total</b>	<b>4</b>	<b>4</b>
<b>Marangaroo</b>		
5110401	-	-
5110402	204	202
5110403	405	386
5110404	284	305
5110405	362	302
5110406	212	166
5110407	300	351
5110408	221	204
5110409	263	238
5110410	316	350
5110411	308	300
5110412	251	238
5110413	290	275
5110414	258	248
5110415	370	401
5110416	353	376
5110417	256	202
5110418	265	312
5110419	144	185
5110420	355	355
5110421	295	324
5110422	329	330
5110423	284	287

<b>Division / SA2 SA1</b>	<b>Sum of actual_enrolment</b>	<b>Sum of projected_enrolment</b>
5110424	309	283
5110425	171	194
5110426	364	389
<b>Marangaroo Total</b>	<b>7,169</b>	<b>7,203</b>
<b>Cowan to Stirling Total</b>	<b>33,190</b>	<b>33,501</b>
<b>Curtin to Stirling</b>		
<b>Innaloo - Doubleview</b>		
5108801	349	349
5108803	371	379
5108804	317	312
5108805	289	296
5108808	275	295
5108809	332	313
5108810	362	346
5108811	380	416
5108812	309	351
5108813	369	380
5108818	622	611
5108819	638	639
5108824	500	521
5108825	390	385
5108826	310	295
5108827	180	161
5108828	436	441
5108829	342	355
5108830	385	422
<b>Innaloo - Doubleview Total</b>	<b>7,156</b>	<b>7,267</b>
<b>Scarborough</b>		
5109201	341	354
5109202	451	491
5109203	443	466
<b>Scarborough Total</b>	<b>1,235</b>	<b>1,311</b>
<b>Curtin to Stirling Total</b>	<b>8,391</b>	<b>8,578</b>
<b>Forrest to O'Connor</b>		
<b>Augusta</b>		
5100101	269	282
5100102	793	950
5100103	383	398
5100104	355	402
5100105	234	271
5100106	1	1
5100107	287	320
5100108	-	-



Division / SA2 SA1	Sum of actual_enrolment	Sum of projected_enrolment
5100109	361	403
5100110	182	201
5100111	285	308
5100112	260	307
5100113	216	229
5100114	427	518
5100115	268	301
5100116	-	-
<b>Augusta Total</b>	<b>4,321</b>	<b>4,891</b>
<b>Margaret River</b>		
5100401	319	297
5100405	289	350
5100406	333	403
5100407	206	198
5100408	225	245
5100410	518	655
5100411	187	215
5100412	293	331
5100413	428	478
5100414	417	455
5100415	230	230
5100416	351	380
5100417	388	431
5100418	138	136
5100419	204	237
5100420	246	305
5100421	257	319
5100422	367	440
5100423	2	2
5100424	189	201
5100425	220	213
5100426	195	204
5100427	243	294
<b>Margaret River Total</b>	<b>6,245</b>	<b>7,019</b>
<b>Pemberton</b>		
5102008	171	151
5102009	382	438
5102010	466	454
<b>Pemberton Total</b>	<b>1,019</b>	<b>1,043</b>
<b>Forrest to O'Connor Total</b>	<b>11,585</b>	<b>12,953</b>
<b>Fremantle to Brand</b>		
<b>Banjup</b>		
5114803	428	474

Division / SA2 SA1	Sum of actual_enrolment	Sum of projected_enrolment
5114806	466	513
5114808	429	409
5114809	434	436
5114810	337	367
5114811	376	363
5114812	232	210
5114813	218	260
5114814	185	184
5114815	201	214
5114816	396	393
5114817	309	308
5114818	320	312
5114819	356	368
5114820	244	269
5114821	363	459
5114822	311	378
5114823	227	241
5114824	292	299
5114825	353	391
5114826	254	297
5114827	365	354
5114828	322	328
5114829	433	463
5114830	-	-
5114831	367	448
5114832	277	332
5114833	236	281
5114834	317	366
5114835	435	425
5114836	293	289
5114837	357	357
<b>Banjup Total</b>	<b>10,133</b>	<b>10,788</b>
<b>Beeliar - Wattleup</b>		
5125901	423	545
5125902	284	284
5125903	334	343
5125904	166	191
5125905	225	220
5125906	291	319
5125907	381	413
5125908	398	435
5125909	301	296
5125910	270	281

Division / SA2 SA1	Sum of actual_enrolment	Sum of projected_enrolment
5125911	520	625
5125912	413	459
5125913	303	277
5125914	88	93
5125915	206	192
5125916	186	190
5125917	1,181	1,510
<b>Beeliar - Wattleup Total</b>	<b>5,970</b>	<b>6,673</b>
<b>Coogee</b>		
5115210	155	147
5115211	1,267	1,521
5115217	243	281
<b>Coogee Total</b>	<b>1,665</b>	<b>1,949</b>
<b>Henderson</b>		
5115501	9	9
<b>Henderson Total</b>	<b>9</b>	<b>9</b>
<b>South Lake - Cockburn Central</b>		
5115901	229	226
5115902	222	213
5115903	175	167
5115904	310	301
5115905	253	276
5115906	423	455
5115907	260	236
5115908	341	357
5115909	307	304
5115910	360	354
5115911	317	304
5115912	850	1,022
5115913	233	217
5115914	218	214
5115915	207	219
5115916	372	370
5115917	280	267
5115918	339	349
5115919	413	403
5115920	399	451
5115921	285	262
5115922	211	200
5115923	248	225
5115924	346	378
5115925	326	286
<b>South Lake - Cockburn Central Total</b>	<b>7,924</b>	<b>8,056</b>

Division / SA2 SA1	Sum of actual_enrolment	Sum of projected_enrolment
<b>Success - Hammond Park</b>		
5116101	541	635
5116102	274	297
5116103	306	356
5116105	258	293
5116106	246	301
5116107	165	175
5116108	337	337
5116110	282	286
5116112	286	261
5116114	243	244
5116115	341	337
5116116	264	275
5116117	309	325
5116118	203	222
5116119	240	241
5116120	513	567
5116121	293	289
5116122	343	368
5116123	529	608
5116124	149	159
5116125	272	286
5116126	534	668
5116127	378	399
5116128	297	357
5116129	221	235
5116130	338	387
5116131	267	278
5116132	785	999
5116133	344	377
<b>Success - Hammond Park Total</b>	<b>9,558</b>	<b>10,562</b>
<b>Yangebup</b>		
5116301	153	167
5116302	652	687
5116303	547	657
5116304	1	1
5116305	312	322
5116306	262	307
5116307	350	325
5116308	207	167
5116309	320	266
5116310	177	179
5116311	442	431

Division / SA2 SA1	Sum of actual_enrolment	Sum of projected_enrolment
5116312	242	238
5116313	211	213
5116314	333	310
5116315	159	154
5116316	332	356
5116317	305	302
5116318	183	194
<b>Yangebup Total</b>	<b>5,188</b>	<b>5,276</b>
<b>Fremantle to Brand Total</b>	<b>40,447</b>	<b>43,313</b>
<b>Fremantle to Tangney</b>		
<b>Banjup</b>		
5114807	1,823	2,821
<b>Banjup Total</b>	<b>1,823</b>	<b>2,821</b>
<b>Jandakot</b>		
5126001	170	171
5126002	412	473
5126003_FREMANTLE	-	-
5126004	380	388
5126005	220	185
5126006	170	179
5126007	223	219
5126008	198	236
5126009	-	-
<b>Jandakot Total</b>	<b>1,773</b>	<b>1,851</b>
<b>Fremantle to Tangney Total</b>	<b>3,596</b>	<b>4,672</b>
<b>Hasluck to Burt</b>		
<b>Forrestfield - Wattle Grove</b>		
5113801	144	148
5113803	285	265
5113804_HASLUCK	273	298
5113807	251	220
5113808	319	313
5113809	223	208
5113810	262	220
5113811	222	216
5113812	173	136
5113813	334	299
5113814	1,087	1,256
5113815	283	309
5113816	142	148
5113817	-	-
5113818	213	220
5113819	311	308



<b>Division / SA2 SA1</b>	<b>Sum of actual_enrolment</b>	<b>Sum of projected_enrolment</b>
5113820	276	246
5113821	292	261
5113822	380	376
5113823	237	231
5113824	228	214
5113825	339	285
5113826	365	325
5113827	242	209
5113828	286	298
5113831	233	251
5113832	357	355
5113833	407	417
5113834	291	271
5113835	199	204
5113836	268	257
5113837	374	327
5113839	-	-
<b>Forrestfield - Wattle Grove Total</b>	<b>9,296</b>	<b>9,091</b>
<b>Kalamunda - Maida Vale - Gooseberry Hill</b>		
5114001	391	374
5114002	294	291
5114003	250	254
5114004	233	228
5114005	320	316
5114006	414	398
5114007	263	243
5114008	294	290
5114009	406	437
5114010	331	369
5114011	170	169
5114012	353	341
5114013	419	402
5114014	290	329
5114015	419	429
5114016	532	535
5114017	302	283
5114018	331	331
5114019	394	358
5114020	274	299
5114021	307	290
5114022	248	268
5114023	480	432
5114024	419	408

Division / SA2 SA1	Sum of actual_enrolment	Sum of projected_enrolment
5114025	243	250
5114026	364	312
5114027	381	363
5114028	302	308
5114029	205	246
5114030	211	205
5114031	235	248
5114032	564	604
5114033	345	384
5114034	513	525
5114035	8	8
<b>Kalamunda - Maida Vale - Gooseberry Hill</b>	<b>11,505</b>	<b>11,527</b>
<b>Lesmurdie - Bickley - Carmel</b>		
5114103	301	271
5114104	350	356
5114105	308	333
5114106	245	242
5114107	284	321
5114108	373	344
5114109	205	213
5114110	312	298
5114111	301	344
5114112	262	270
5114113	356	349
5114114	343	396
5114115	155	159
5114117	235	239
5114118	207	219
5114119	267	281
5114120	200	198
5114121	301	287
5114122	206	214
5114123_HASLUCK	12	15
5114124	230	224
5114125	263	287
5114126	379	431
5114127	338	410
5114128	236	256
5114129_HASLUCK	-	-
5114131	383	347
5114132	242	262
5114133	221	245
<b>Lesmurdie - Bickley - Carmel Total</b>	<b>7,515</b>	<b>7,811</b>

Division / SA2 SA1	Sum of actual_enrolment	Sum of projected_enrolment
<b>Malmalling - Reservoir</b>		
5105201B	-	-
<b>Malmalling - Reservoir Total</b>	-	-
<b>Perth Airport</b>		
5112102_HASLUCK	-	-
<b>Perth Airport Total</b>	-	-
<b>Hasluck to Burt Total</b>	<b>28,316</b>	<b>28,429</b>
<b>Hasluck to Swan</b>		
<b>Beckenham - Kenwick - Langford</b>		
5113203	345	386
5113204	293	314
5113205	404	435
5113206	370	366
5113207	166	190
5113208	139	123
5113209	6	6
5113210	173	154
5113211	321	315
5113212	276	317
5113213	463	492
5113219	323	360
5113220	176	165
5113221	226	245
5113222	265	260
5113223	302	331
5113224	425	456
5113225	290	291
5113231	225	237
5113232	283	284
5113234	276	327
5113235	235	260
5113236	327	341
5113237	183	169
5113238	333	293
5113239	265	265
5113240	349	320
5113241	199	211
5113242	205	218
5113244	153	160
5113247	247	247
<b>Beckenham - Kenwick - Langford Total</b>	<b>8,243</b>	<b>8,538</b>
<b>Cannington - Queens Park</b>		
5112702_HASLUCK	-	-

Division / SA2 SA1	Sum of actual_enrolment	Sum of projected_enrolment
<b>Cannington - Queens Park Total</b>	-	-
<b>Forrestfield - Wattle Grove</b>		
5113840	336	382
5113841	296	358
5113842	299	328
5113843	358	444
5113844	300	324
5113845	303	329
5113846	525	672
5113847	386	461
5113848	246	237
<b>Forrestfield - Wattle Grove Total</b>	<b>3,049</b>	<b>3,535</b>
<b>Maddington - Orange Grove - Martin</b>		
5113601	145	154
5113602	228	246
5113603	169	159
5113604	258	267
5113606	328	337
5113607	181	169
5113608	269	263
5113609	292	274
5113610	200	171
5113611	262	280
5113612	225	253
5113613	521	564
5113614	434	455
5113615	393	407
5113616	287	276
5113617	237	237
5113618	334	338
5113620	254	269
5113621	695	849
5113622	91	78
5113625	366	334
5113627	370	417
5113629	450	502
<b>Maddington - Orange Grove - Martin Total</b>	<b>6,989</b>	<b>7,299</b>
<b>Welshpool</b>		
5113001_HASLUCK	-	-
<b>Welshpool Total</b>	-	-
<b>Hasluck to Swan Total</b>	<b>18,281</b>	<b>19,372</b>
<b>Pearce to Durack</b>		
<b>Chittering</b>		

Division / SA2 SA1	Sum of actual_enrolment	Sum of projected_enrolment
5123601	161	168
5123602	218	206
5123603	243	247
5123604	312	364
5123605	217	246
5123606	282	311
5123607	883	1,106
5123608	212	247
5123609	389	427
5123610	545	616
5123611	175	202
5123612	283	268
<b>Chittering Total</b>	<b>3,920</b>	<b>4,408</b>
<b>Gingin - Dandaragan</b>		
5123901	171	177
5123904	339	361
5123905	385	396
5123906	170	171
5123907	365	362
5123909	63	61
5123913	103	84
5123919	494	515
5123920	538	545
5123921	224	244
5123922	174	179
5123923	176	169
5123924	380	394
<b>Gingin - Dandaragan Total</b>	<b>3,582</b>	<b>3,658</b>
<b>Northam</b>		
5124301	218	197
5124302	289	280
5124303	239	251
5124304	206	236
5124305	206	181
5124306	204	233
5124307	234	178
5124308	275	270
5124309	330	358
5124310	184	192
5124311	215	211
5124312	144	130
5124313	272	243
5124314	197	158



Division / SA2 SA1	Sum of actual_enrolment	Sum of projected_enrolment
5124315	206	187
5124316	194	190
5124317	156	137
5124318	214	191
5124319	209	157
5124320	292	290
5124321	401	478
5124322	162	178
5124323	198	187
5124324	185	213
5124325	160	146
5124326	138	133
5124327	146	152
5124328	165	167
5124329	210	228
5124330	158	159
5124331	183	174
5124332	190	196
5124333	270	274
5124334	100	96
5124335	199	177
<b>Northam Total</b>	<b>7,349</b>	<b>7,228</b>
<b>Toodyay</b>		
5124401	321	346
5124402	241	245
5124403	168	153
5124404	298	318
5124405	300	304
5124406	250	262
5124407	317	361
5124408	145	141
5124409	269	286
5124410	228	225
5124411	273	264
5124412	175	184
5124413	341	364
<b>Toodyay Total</b>	<b>3,326</b>	<b>3,453</b>
<b>York - Beverley</b>		
5124501	225	228
5124502	280	280
5124503	208	209
5124504	429	442
5124505	196	188

Division / SA2 SA1	Sum of actual_enrolment	Sum of projected_enrolment
5124506	275	267
5124507	245	245
5124508	294	302
5124509	218	206
5124510	372	385
5124511	214	238
5124512	238	250
5124513_PEARCE	134	141
5124514	244	227
5124515	231	212
5124516	214	180
<b>York - Beverley Total</b>	<b>4,017</b>	<b>4,000</b>
<b>Pearce to Durack Total</b>	<b>22,194</b>	<b>22,747</b>
<b>Pearce to Hasluck</b>		
<b>Avon Valley National Park</b>		
5105501	5	5
<b>Avon Valley National Park Total</b>	<b>5</b>	<b>5</b>
<b>Beechboro</b>		
5105709_PEARCE	-	-
5105731	112	125
5105732	268	250
5105733_PEARCE	2,535	3,347
<b>Beechboro Total</b>	<b>2,915</b>	<b>3,722</b>
<b>Bullsbrook</b>		
5105801	23	30
5105802	262	287
5105803	474	529
5105804	506	581
5105805	151	159
5105806	83	76
5105807	132	132
5105808	291	300
5105809	527	611
5105810	328	386
5105811	309	312
5105812	193	205
5105813	339	385
<b>Bullsbrook Total</b>	<b>3,618</b>	<b>3,993</b>
<b>Ellenbrook</b>		
5105902	605	688
5105905	196	185
5105906	218	212
5105907	-	-

<b>Division / SA2 SA1</b>	<b>Sum of actual_enrolment</b>	<b>Sum of projected_enrolment</b>
5105909	280	274
5105910	319	278
5105911	96	96
5105912	217	209
5105913	4,178	6,418
5105914	198	203
5105915	281	277
5105916	195	202
5105917	217	201
5105918	242	186
5105919	186	152
5105920	324	330
5105921	191	195
5105922	246	248
5105923	247	243
5105924	394	369
5105925	199	228
5105926	328	284
5105927	190	201
5105928	99	108
5105929	147	169
5105930	182	170
5105932	234	234
5105933	318	315
5105934	252	223
5105935	552	638
5105936	141	155
5105938	271	249
5105939	188	196
5105940	365	361
5105941	298	310
5105942	245	216
5105943	257	295
5105944	230	222
5105945	269	285
5105946	282	275
5105947	121	125
5105948	194	210
5105949	358	329
5105951	-	-
5105952	209	163
5105953	285	283
5105954	244	202

Division / SA2 SA1	Sum of actual_enrolment	Sum of projected_enrolment
5105955	156	156
5105956	307	287
5105957	188	175
5105959	336	382
5105960	125	140
5105961	349	388
5105962	416	457
5105963	319	325
5105964	204	209
5105965	286	299
5105966	172	186
5105967	371	452
5105968	298	334
5105969	214	217
5105970	456	547
5105971	265	360
5105972	254	249
5105973	180	187
5105974	451	972
5105975	-	-
5105976	153	159
5105977	1,389	2,378
5105978	248	287
5105979	126	160
5105980	223	331
5105981	315	565
5105982	356	419
5105983	253	249
5105984	244	252
5105985	194	196
5105986	273	278
5105987	774	837
<b>Ellenbrook Total</b>	<b>25,183</b>	<b>29,845</b>
<b>Gidgegannup</b>		
5106001_PEARCE	24	26
<b>Gidgegannup Total</b>	<b>24</b>	<b>26</b>
<b>Lockridge - Kiara</b>		
5106202_PEARCE	13	19
<b>Lockridge - Kiara Total</b>	<b>13</b>	<b>19</b>
<b>Melaleuca - Lexia</b>		
5106401	2	2
<b>Melaleuca - Lexia Total</b>	<b>2</b>	<b>2</b>
<b>Middle Swan - Herne Hill</b>		

Division / SA2 SA1	Sum of actual_enrolment	Sum of projected_enrolment
5106502	274	320
5106503	265	233
5106504	227	223
5106505	429	425
5106506	247	256
5106510_PEARCE	67	72
<b>Middle Swan - Herne Hill Total</b>	<b>1,509</b>	<b>1,529</b>
<b>Stratton - Jane Brook</b>		
5106710_PEARCE	-	-
<b>Stratton - Jane Brook Total</b>	<b>-</b>	<b>-</b>
<b>The Vines</b>		
5106801	193	205
5106802	200	216
5106803	210	189
5106804	325	328
5106807	406	378
5106808	246	215
5106809	700	744
5106810	477	673
5106811	306	279
5106812	215	186
5106813	334	337
5106814	331	319
5106815	285	294
5106816	1,318	2,233
5106817	36	30
5106818	723	932
5106819	495	586
5106820	804	956
<b>The Vines Total</b>	<b>7,604</b>	<b>9,100</b>
<b>Walyunga National Park</b>		
5106901	1	1
<b>Walyunga National Park Total</b>	<b>1</b>	<b>1</b>
<b>Wanneroo</b>		
5110840_PEARCE	23	27
<b>Wanneroo Total</b>	<b>23</b>	<b>27</b>
<b>Pearce to Hasluck Total</b>	<b>40,897</b>	<b>48,269</b>
<b>Perth to Curtin</b>		
<b>Mount Hawthorn - Leederville</b>		
5103801	253	258
5103802	377	369
5103803	332	320
5103804	210	178

<b>Division / SA2 SA1</b>	<b>Sum of actual_enrolment</b>	<b>Sum of projected_enrolment</b>
5103805	266	276
5103806	404	390
5103807	257	317
5103808	232	236
5103809	284	276
5103810	334	353
5103811	314	355
5103812	-	-
5103813	377	432
5103814	227	209
5103815	252	287
5103816	211	250
5103817	407	481
5103818	224	233
5103819	205	216
5103820	255	246
5103821	216	229
5103822	461	448
5103823	217	204
5103824	290	306
5103825	237	251
5103826	488	526
5103827	211	207
5103828	314	322
<b>Mount Hawthorn - Leederville Total</b>	<b>7,855</b>	<b>8,175</b>
<b>Stirling - Osborne Park</b>		
5109330_PERTH	-	-
<b>Stirling - Osborne Park Total</b>	<b>-</b>	<b>-</b>
<b>Perth to Curtin Total</b>	<b>7,855</b>	<b>8,175</b>
<b>Stirling to Curtin</b>		
<b>Stirling - Osborne Park</b>		
5109301	308	268
5109302	435	395
5109309	188	161
5109310	259	243
5109311	205	178
5109312	336	270
5109313	253	231
5109314	232	219
5109315	254	235
5109316	354	430
5109317	438	511
5109318	381	356



Division / SA2 SA1	Sum of actual_enrolment	Sum of projected_enrolment
5109319	185	173
5109327	567	611
5109328	256	240
5109329	639	723
5109330_STIRLING	1	1
<b>Stirling - Osborne Park Total</b>	<b>5,291</b>	<b>5,245</b>
<b>Tuart Hill - Joondanna</b>		
5109501	211	190
5109502	226	212
5109503	263	221
5109504	206	199
5109505	318	287
5109506	316	324
5109507	291	291
5109508	311	311
5109509	230	228
5109510	289	302
5109511	445	465
5109512	333	332
5109513	348	344
5109514	390	371
5109515	266	265
5109516	303	243
5109517	282	278
5109518	191	202
5109519	285	292
5109520	343	360
5109521	215	256
5109522	301	298
5109523	361	381
5109524	294	271
5109525	265	254
5109526	323	298
5109527	244	231
5109528	339	374
<b>Tuart Hill - Joondanna Total</b>	<b>8,189</b>	<b>8,080</b>
<b>Stirling to Curtin Total</b>	<b>13,480</b>	<b>13,325</b>
<b>Stirling to Perth</b>		
<b>Dianella</b>		
5108604	169	168
5108605	380	328
5108606	278	291
5108607	333	316

Division / SA2 SA1	Sum of actual_enrolment	Sum of projected_enrolment
5108608	280	278
5108609	330	291
5108611	167	155
5108612	293	317
5108613	325	354
5108614	473	525
5108615	379	360
5108616	467	525
5108617	412	380
5108629	333	328
5108630	351	378
5108631	311	336
5108632	388	365
5108633	249	225
5108634	336	324
5108635	361	350
5108641	392	433
5108642	450	435
5108643	316	332
5108645	370	406
5108646	510	518
5108647	292	277
<b>Dianella Total</b>	<b>8,945</b>	<b>8,995</b>
<b>Morley</b>		
5104708	328	329
5104710	205	202
<b>Morley Total</b>	<b>533</b>	<b>531</b>
<b>Yokine - Coolbinia - Menora</b>		
5109701	180	185
5109702	234	272
5109703	207	179
5109704	444	419
5109705	322	327
5109707	225	210
5109708	282	272
5109709	307	332
5109710	391	341
5109711	301	295
5109712	430	422
5109713	482	483
5109714	259	245
5109715	481	482
5109716	531	534

<b>Division / SA2 SA1</b>	<b>Sum of actual_enrolment</b>	<b>Sum of projected_enrolment</b>
5109717	358	372
5109718	343	363
5109719	375	320
5109720	408	397
5109721	389	346
5109722	474	455
5109723	401	363
5109724	255	216
5109729	295	328
5109734	-	-
<b>Yokine - Coolbinia - Menora Total</b>	<b>8,374</b>	<b>8,158</b>
<b>Stirling to Perth Total</b>	<b>17,852</b>	<b>17,684</b>
<b>Swan to Burt</b>		
<b>Forrestfield - Wattle Grove</b>		
5113804_SWAN	14	15
5113806	1	1
<b>Forrestfield - Wattle Grove Total</b>	<b>15</b>	<b>16</b>
<b>High Wycombe</b>		
5113901	233	207
5113902	421	500
5113903	368	319
5113904	353	377
5113907	277	303
5113908	246	219
5113909	260	238
5113910	219	266
5113911	441	463
5113913	217	197
5113914	264	271
5113915	270	264
5113916	129	125
5113917	188	166
5113918	409	451
5113919	290	275
5113920	302	312
5113921	330	337
5113922	364	349
5113923	434	457
5113924	305	313
5113925	241	229
5113926	287	265
5113927	179	185
5113928	418	409

Division / SA2 SA1	Sum of actual_enrolment	Sum of projected_enrolment
5113929	247	246
5113930	356	375
5113931	242	242
<b>High Wycombe Total</b>	<b>8,290</b>	<b>8,360</b>
<b>Swan to Burt Total</b>	<b>8,305</b>	<b>8,376</b>
<b>Swan to Hasluck</b>		
<b>Hazelmere - Guildford</b>		
5106104_SWAN	-	-
<b>Hazelmere - Guildford Total</b>	-	-
<b>Swan to Hasluck Total</b>	-	-
<b>Tangney to Fremantle</b>		
<b>Applecross - Ardross</b>		
5117501	287	303
5117502	334	311
5117503	380	362
5117504	442	420
5117505	296	314
5117506	297	264
5117507	271	284
5117508	326	262
5117509	368	394
5117510	380	370
5117511	335	311
5117512	294	295
5117513	255	262
5117514	330	365
5117515	384	407
5117516	417	376
5117517	413	383
5117518	389	433
5117519	274	327
5117520	399	391
5117521	251	260
5117522	294	304
5117523	411	409
5117524	223	193
<b>Applecross - Ardross Total</b>	<b>8,050</b>	<b>8,000</b>
<b>Bateman</b>		
5117601	266	267
5117602	262	267
5117603	339	344
5117604	231	206
5117605	161	140

Division / SA2 SA1	Sum of actual_enrolment	Sum of projected_enrolment
5117606	351	304
5117607	421	430
5117608	187	188
5117609	357	397
<b>Bateman Total</b>	<b>2,575</b>	<b>2,543</b>
<b>Bicton - Palmyra</b>		
5117701	275	287
5117702	371	418
5117703	363	333
5117704	328	354
5117705	289	298
5117706	303	304
5117713	579	569
5117715	359	375
5117716	365	430
5117717	435	445
5117718	451	524
5117719	456	437
5117720	391	427
5117721	329	323
<b>Bicton - Palmyra Total</b>	<b>5,294</b>	<b>5,524</b>
<b>Booragoon</b>		
5117801	407	430
5117802	334	327
5117803	213	233
5117804	323	360
5117805	340	323
5117806	362	377
5117807	436	455
5117808	275	293
5117809	423	395
5117810	282	270
5117811	449	455
5117812	382	361
5117813	349	350
5117814	166	174
5117815	483	441
5117816	238	273
5117817	354	350
5117818	251	269
5117819	190	209
5117820	370	387
5117821	250	287

Division / SA2 SA1	Sum of actual_enrolment	Sum of projected_enrolment
5117822	327	332
5117823	286	279
5117824	347	388
5117825	336	394
5117826	459	443
5117827	552	490
5117830	216	195
5117831	317	302
<b>Booragoon Total</b>	<b>9,717</b>	<b>9,842</b>
<b>Melville</b>		
5118101	355	363
5118102	381	427
5118103	361	354
5118104	417	479
5118105	269	260
5118106	389	430
5118107	436	413
5118108	326	382
5118109	387	415
5118110	349	345
5118111	457	462
5118112	443	499
5118113	438	408
5118114	315	334
5118115	315	330
5118116	352	378
5118117	177	181
5118118	449	477
5118119	463	427
5118120	525	572
5118121	400	398
5118122	362	381
5118123	346	364
5118124	498	482
5118125	492	494
5118126	412	460
5118127	182	201
5118128	327	378
5118129	342	364
5118130	478	465
5118131	427	543
5118132	334	376
<b>Melville Total</b>	<b>12,204</b>	<b>12,842</b>



Division / SA2 SA1	Sum of actual_enrolment	Sum of projected_enrolment
<b>Murdoch - Kardinya</b>		
5118204	322	329
5118205	212	244
5118206	291	316
5118207	333	354
5118208	220	227
5118209	282	266
5118210	378	373
5118211	170	185
5118212	260	248
5118213	564	604
5118219	265	279
5118220	312	338
5118221	421	434
5118222	268	240
5118223	391	408
5118224	449	419
5118225	170	173
5118226	153	158
5118227	431	458
5118228	284	254
<b>Murdoch - Kardinya Total</b>	<b>6,176</b>	<b>6,307</b>
<b>Willagee</b>		
5118301	335	312
5118302	496	491
5118303	306	283
5118304	306	314
5118305	296	319
5118306	415	347
5118307	225	160
5118308	449	477
5118309	251	270
5118310	344	338
<b>Willagee Total</b>	<b>3,423</b>	<b>3,311</b>
<b>Winthrop</b>		
5118401	183	186
5118402	197	170
5118403	354	362
5118404	308	287
5118405	163	177
5118406	194	195
5118407	-	-
5118408	235	252

<b>Division / SA2 SA1</b>	<b>Sum of actual_enrolment</b>	<b>Sum of projected_enrolment</b>
5118409	367	375
5118410	342	343
5118411	272	259
5118412	145	179
5118413	213	217
5118414	278	235
5118415	178	205
5118416	177	186
5118417	191	198
5118418	388	346
<b>Winthrop Total</b>	<b>4,185</b>	<b>4,172</b>
<b>Tangney to Fremantle Total</b>	<b>51,624</b>	<b>52,541</b>
<b>Grand Total</b>	<b>523,363</b>	<b>554,524</b>