



Objection Í J

Šã^|æÁæc^Á-ÁE•cæãÁ
Çãç|ãçÁçãç}D
G Áæ^•



Objection to the proposed draft boundaries for the Federal Redistribution of Victoria



by the
**Liberal Party
of Australia**
(Victorian Division)

16 April 2021





Contents

■ Executive Summary	5
■ Public Inquiry into Objections	5
■ Regional Victoria	6
Corio	6
Tucker (current Division of Corngamite)	6
Wannon	6
Mallee	8
Ballarat	9
Bendigo	9
Nicholls	9
McEwen	9
Indi	9
Gippsland	10
Monash	10
■ Greater Melbourne	10
Southern Suburbs	10
Macnamara	10
Higgins	10
Goldstein	10
Eastern Suburbs	10
Kooyong	10
Menzies	11
Casey	11
Aston	11
Deakin	11
Chisholm	12
Hotham	13
Mornington Peninsula	13
Flinders	13
Dunkley	13
South-Eastern Suburbs	13
Isaacs	13
Bruce	13
Holt	15
La Trobe	16
Western Suburbs	18
Lalor	18
Gorton	18
Fraser	18
Gellibrand	19
North-Western Suburbs	20
Mar byrnong	20
Calwell	20
Hawke	21
Northern Suburbs	21
Melbourne	21
Wills	22
Cooper	22
Jagajaga	23
Scullin	23





EXECUTIVE SUMMARY

The Liberal Party of Australia (Victorian Division) ('Liberal Party') congratulates the Redistribution Committee for Victoria ('Redistribution Committee') on its well considered and measured proposed draft boundaries for the Federal Redistribution of Victoria.

The Liberal Party especially congratulates the Redistribution Committee for proposing to retain the existing boundaries of nine Divisions, namely: Aston Corio, Dunkley, Flinders, Gippsland, Goldstein, Indi, Nicholls and Scullin. Similarly, the Redistribution Committee has been able to also retain a significant number of the existing boundaries for parts of other Divisions. This consistency in boundaries between elections and redistributions assists electors in strengthening their political community and representation while also minimises confusion. The Liberal Party supports the Redistribution Committee's efforts to maintain current boundaries wherever it is possible.

The Liberal Party does not propose any changes to twenty-four proposed Divisions and notes one suggested change to the proposed Division of Lalor that the augmented Electoral Commission may consider if other changes elsewhere were to enable it.

The Liberal Party only proposes ten minor changes to the Redistribution Committee's proposed draft boundaries that affect fourteen proposed Divisions to better align communities within those proposed Divisions. Largely, these objections seek to retain electors within their current Divisions or minimise the number of electors being transferred.

For example, one of the changes proposed is to the boundary between the Divisions of Wannon and Mallee to reverse the transfer of Stawell and Halls Gap from Wannon to Mallee to improve the alignment of these communities with the Western Highway corridor to their south-east and reduce the number of electors that are changing divisions at this redistribution.

PUBLIC INQUIRY INTO OBJECTIONS

In the event the augmented Electoral Commission considers it necessary to hold a public inquiry into the Objections to the proposed Redistribution, the Liberal Party requests permission to appear before such inquiry conducted by the augmented Electoral Commission.

Regional Victoria

Corio

The Liberal Party reiterates its support for the retention of the current boundaries for the Division of Corio, as proposed in the Redistribution Committee's draft boundaries.

Tucker (current Division of Corangamite)

The Liberal Party is generally supportive of the Redistribution Committee's proposed draft boundaries for the Division of Tucker (current Division of Corangamite) in the broader context of the boundaries proposed throughout western Victoria.

In relation to the Redistribution Committee's proposal to rename the Division of Corangamite, the Liberal Party acknowledges the significant contribution of Margaret (Lilardia) Elizabeth Tucker MBE to the community which eminently qualifies her for the consideration of the Redistribution Committee in the naming of a Division. However, the Liberal Party also wishes to note its regret at the loss of the name Corangamite, which is both an Aboriginal name and a Federation name, and notes the comments of the Augmented Electoral Commission at the previous Redistribution of Victoria which determined that the name Corangamite was "equally appropriate to a coastally focused electoral division".

Wannon

The Liberal Party appreciates the Redistribution Committee's efforts in retaining Ararat and Beaufort in the Division of Wannon and the Party supports the changes to the eastern boundary of the Division that it shares with the proposed Division of Tucker (current Division of Corangamite) and the Division of Ballarat.

While the Liberal Party did propose in its Suggestion that Stawell and Halls Gap were to be transferred to the Division of Mallee, it noted its reluctance to do so. In light of the general retention of boundaries elsewhere in regional Victoria, there is a possibility for the Division of Wannon to retain Stawell and Halls Gap if a small transfer is made to the Division of Mallee in and around Lexton. This would provide further stability in the current boundaries between the divisions in regional Victoria, further minimise the impact of transfers of electors between divisions where it is unnecessary, and improve the alignment of communities along the Sunraysia Highway and Western Highway corridors in north-western Victoria.

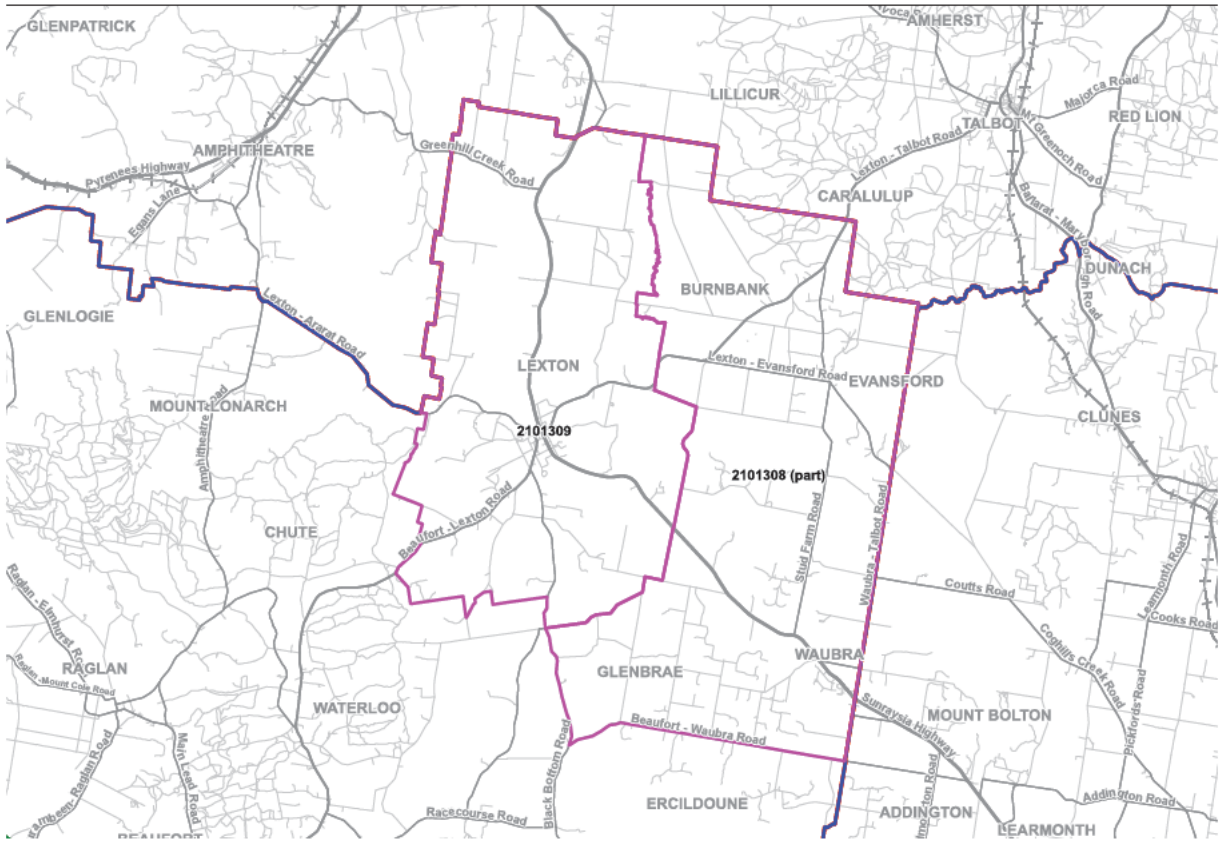
Table 1 Proposed Adjustments

	Actual	Projected
Proposed Division of Wannon	113,223	114,051
Transfer to proposed Division of Mallee*	-534	-548
Transfer from proposed Division of Mallee	+5,781	+5,617
Adjusted proposed Division of Wannon	118,470	119,120

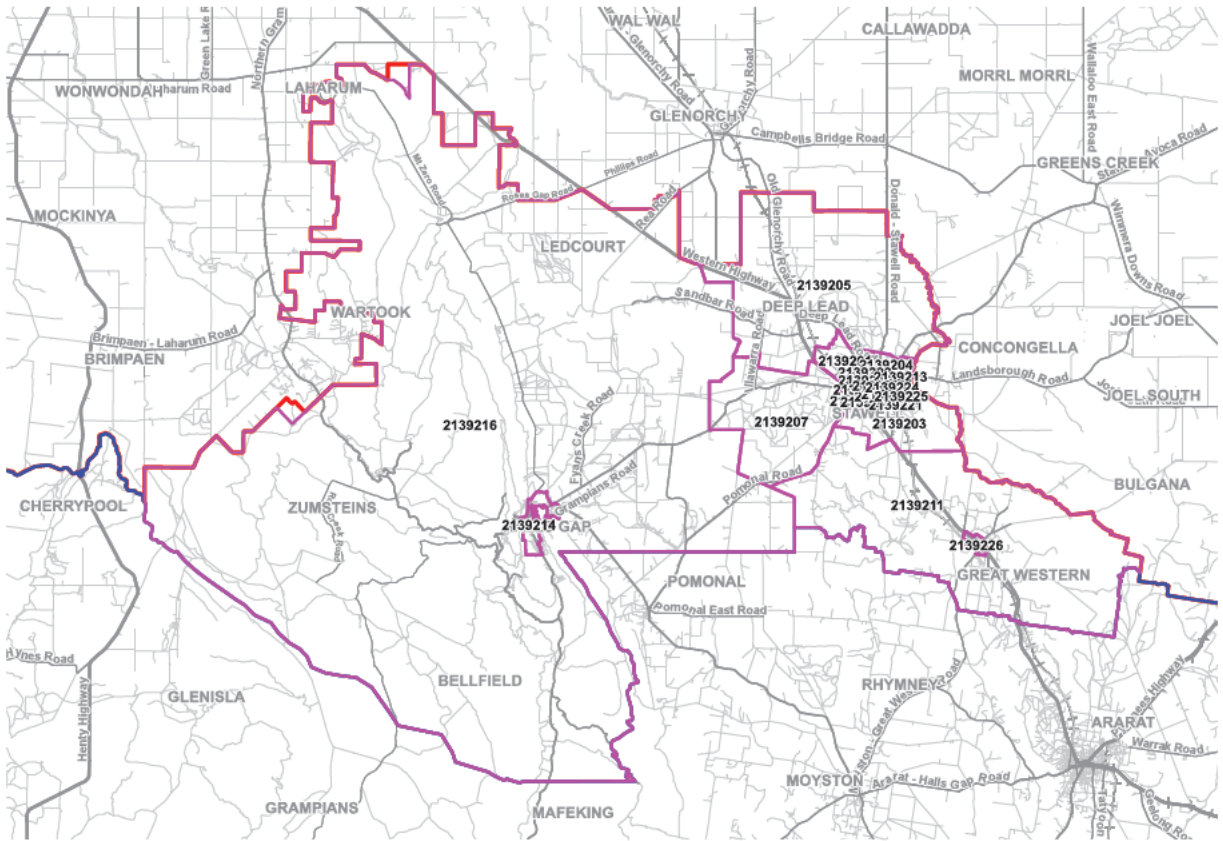
*Note that SA1 2101308 is currently split between the Divisions of Ballarat and Wannon. The number of electors transferred reflects those that are currently in the Division of Wannon per SA1 2101308C in the data provided by the AEC.

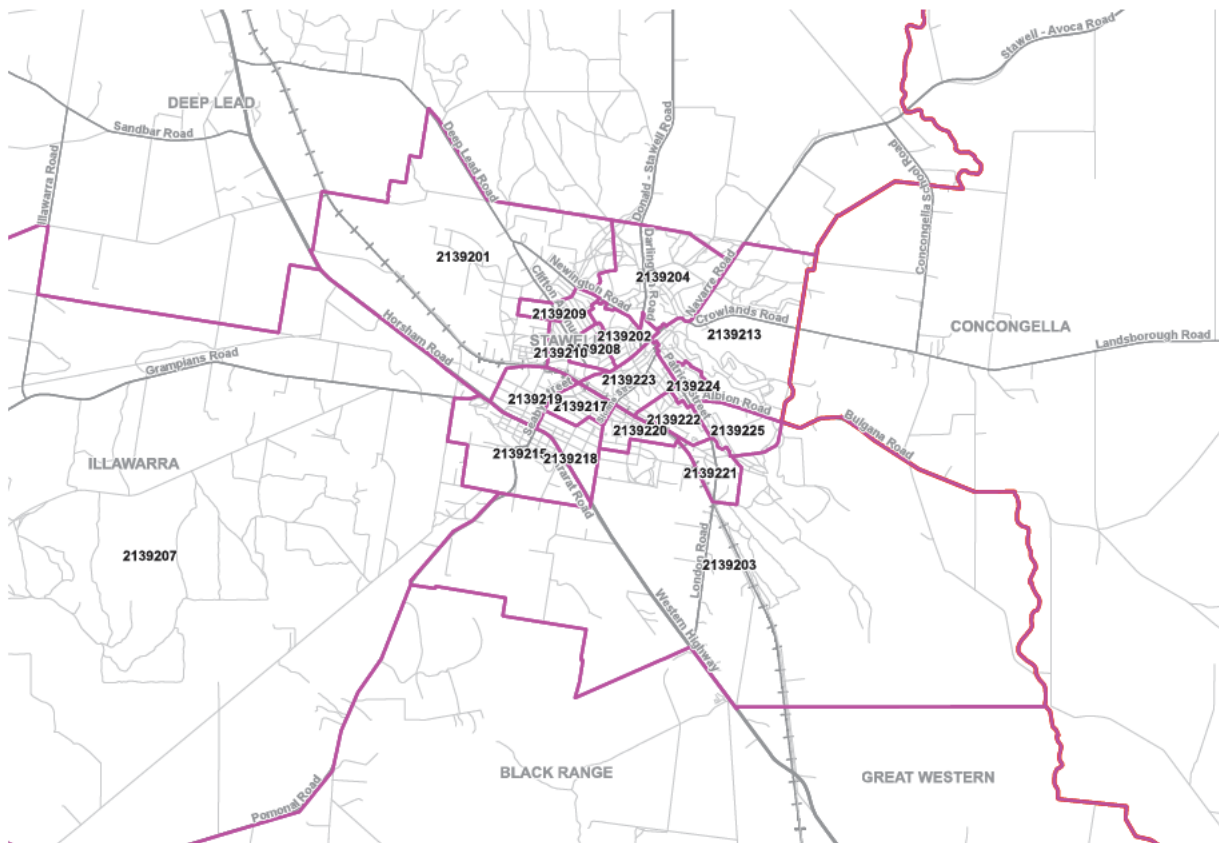


Map 1 Proposed Adjustments from Wannon to Mallee



Map 2 Proposed Adjustments from Mallee to Wannon



Map 3 Proposed Adjustments from Mallee to Wannon (Stawell)**Mallee**

The Liberal Party supports the Redistribution Committee's proposed draft boundaries for the Division of Mallee retaining the existing eastern boundaries. While recognising the need for the Division to gain electors, this can be achieved with a small change to the Division's southern boundary in and around Lexton rather than the much more significant transfer of electors in Halls Gap and Stawell. A minimal transfer would ensure even greater stability in the boundaries across all of Regional Victoria.

As the previous Redistribution Committee recognised, Stawell and Halls Gap link into the communities along the Western Highway and especially to those to their south-east in Ararat. Maintaining Stawell and Halls Gap would also ensure that this area remains within the same division for more than one redistribution, as it has been transferred a number of times between divisions in recent redistributions. Furthermore, to ensure that the Division of Mallee remains above the minimum projected enrolment, it is proposed that the Redistribution Committee instead transfer the area in and around Lexton to the Division of Mallee, as it links in to the communities to its north in Avoca and the Sunraysia Highway corridor more so than with Beaufort and Ararat.

These refinements to the Redistribution Committee's proposed draft boundaries for the Division of Mallee would reinforce the Committee's desire to ensure stability in the boundaries between the divisions in regional Victoria, minimise unnecessary transfers of electors between divisions, and improve the alignment of communities along the Sunraysia Highway and Western Highway corridors in north-western Victoria.

**Table 2 Proposed Adjustments**

	Actual	Projected
Proposed Division of Mallee	119,582	118,663
Transfer to proposed Division of Wannon	-5,781	-5,617
Transfer from proposed Division of Wannon*	+534	+548
Adjusted proposed Division of Mallee	114,335	113,594

*Note that SA1 2101308 is currently split between the Divisions of Ballarat and Wannon. The number of electors transferred reflects those that are currently in the Division of Wannon per SA1 2101308C in the data provided by the AEC. electors transferred reflects those that are currently in the Division of Wannon per SA1 2101308C in the data provided by the AEC.

Ballarat

With the new Division of Hawke taking in the eastern part of the current Division of Ballarat, there need to be transfers of electors from the divisions surrounding the Division of Ballarat. Additionally, as the Redistribution Committee has maintained existing boundaries in northern Victoria, it is only possible for the Division of Ballarat to gain electors to its west and south. The proposed transfer of the whole part of Golden Plains Shire LGA that is in the Division of Wannon and the part that is in the Division of Corangamite (except in and around Bannockburn) is most appropriate relative to other alternatives.

The Liberal Party supports the Redistribution Committee's proposed boundaries for the Division of Ballarat in light of the broader structure of its proposed divisions in regional Victoria.

Bendigo

Given the Redistribution Committee's preference for maintaining current boundaries in northern Victoria, that the Liberal Party supports, it is appropriate to transfer electors in and around Woodend out of the Division of Bendigo while maintaining all the remaining boundaries for the Division. The Liberal Party supports the Redistribution Committee's proposed draft boundaries for the Division of Bendigo.

Nicholls

While the Liberal Party suggested changes to the boundaries of the Division of Nicholls, it supports the Redistribution Committee's retention of the current boundaries for the Division in the context of the broader structure of Divisions that the Redistribution Committee adopted throughout northern Victoria.

McEwen

While the Liberal Party proposed a different alignment to the boundaries of the Division of McEwen, the Party is supportive of the Redistribution Committee's proposed draft boundaries given the proposed location of the new Division of Hawke. While it would be preferable to transfer out the high growth urban areas in Wollert, Mernda, and Doreen that are significantly different to the remaining parts of the Division, the Liberal Party recognises the difficulty in balancing the required enrolment with maintaining a particular character of a Division in this area.

Indi

While the Liberal Party suggested a minor change to the boundaries of the Division of Indi, it supports the Redistribution Committee's retention of the current boundaries for the Division in the context of the broader structure of Divisions that the Redistribution Committee adopted throughout north-eastern Victoria.



Gippsland

While the Liberal Party suggested a minor change to the boundaries of the Division of Gippsland, it supports the Redistribution Committee's retention of the current boundaries for the Division in the context of the broader structure of Divisions that the Redistribution Committee adopted throughout eastern Victoria.

Monash

The Liberal Party supports the Redistribution Committee's proposed draft boundaries for the Division of Monash. The retention of the current northern and eastern boundaries of the Division ensures consistency and minimises the transfer of electors between Divisions.

The Liberal Party further reiterates its support for the transfer of all electors in Cardinia Shire LGA from the Division of Monash to the Division of La Trobe that the Redistribution Committee broadly adopted.

Greater Melbourne

SOUTHERN SUBURBS

Macnamara

The Liberal Party supports the Redistribution Committee's draft boundaries for the Division of Macnamara. The boundaries as proposed strongly reflect the alignment of communities within the inner southern suburbs of Melbourne that are contained within the Division.

Higgins

The Liberal Party supports the Redistribution Committee's draft boundaries for the Division of Higgins. While they do differ in some minor respects from the Liberal Party's suggested boundaries, in the context of other proposed boundaries, they coherently join the various communities within the Division.

The transfer of Hughesdale to the Division of Hotham improves the overall alignment of the boundaries between both Divisions as it removes the small part of the Monash City LGA that is currently in the Division of Higgins.

Additionally, the proposed change in the boundary with the Division of Kooyong, in the context of the view of the Redistribution Committee that the Division of Kooyong should gain electors, is the most optimal arrangement.

Goldstein

While the Liberal Party suggested a number of changes to the boundaries of the Division of Goldstein, it supports the Redistribution Committee's retention of the current boundaries for the Division in the context of the broader structure of Divisions that the Redistribution Committee adopted throughout the southern suburbs of Melbourne.

EASTERN SUBURBS

Kooyong

The Redistribution Committee has proposed that the Division of Kooyong gain a small part of Glen Iris, east of the Alamein Line. The Liberal Party is generally supportive of this change, where there is a need to slightly increase the number of electors in the Division of Kooyong in the opinion of the Redistribution Committee, as this transfer of further electors from Boroondara City LGA is a better alignment of communities than other suggestions made that would have caused additional areas in the Whitehorse City LGA being incorporated into the Division.

This change ensures that more of the Boroondara City LGA is contained within the Division of Kooyong, which is the more optimal outcome overall.



Menzies

The Liberal Party supports the Redistribution Committee's draft boundaries for the Division of Menzies. While the Liberal Party had suggested using the Yarra River for the entirety of the northern boundary for the Division, it recognises the community links in North Warrandyte that cross the River to the south that make it possible to accommodate this change in the current Redistribution.

Casey

The Liberal Party supports the Redistribution Committee's proposed draft boundaries for the Division of Casey.

Aston

The Liberal Party reiterates its support for the retention of the current boundaries for the Division of Aston, as proposed in the Redistribution Committee's draft boundaries.

Deakin

The Liberal Party supports the Redistribution Committee's proposed draft boundaries for the Division of Deakin and reiterates its support for the transfer of Warranwood into the Division and the transfer of the parts of Mitcham and Nunawading north of Whitehorse Road to the Division of Menzies.

In the Committee's proposed boundaries, the suburb of Burwood East is split along Blackburn Road and Burwood Highway. The Liberal Party suggests that the augmented Electoral Commission consider following the Burwood East locality boundary rather than these roads to ensure that the whole Burwood East community is located within the one division. This change to the proposed boundaries would also avoid an unnecessary transfer of electors in this Redistribution and increase the number of electors retained in the same division.

Table 3 Proposed Adjustments

	Actual	Projected
Proposed Division of Deakin	115,004	119,311
Transfer to proposed Division of Chisholm	-1,402	-1,437
Adjusted proposed Division of Deakin	113,602	117,874

Map 4 Proposed Adjustments from Deakin to Chisholm



Chisholm

The Liberal Party generally supports the Redistribution Committee's proposed draft boundaries for the Division of Chisholm and reiterates its support for the retention of the current boundary with the Divisions of Kooyong, Higgins, and Aston, and Whitehorse Road as its northern boundary.

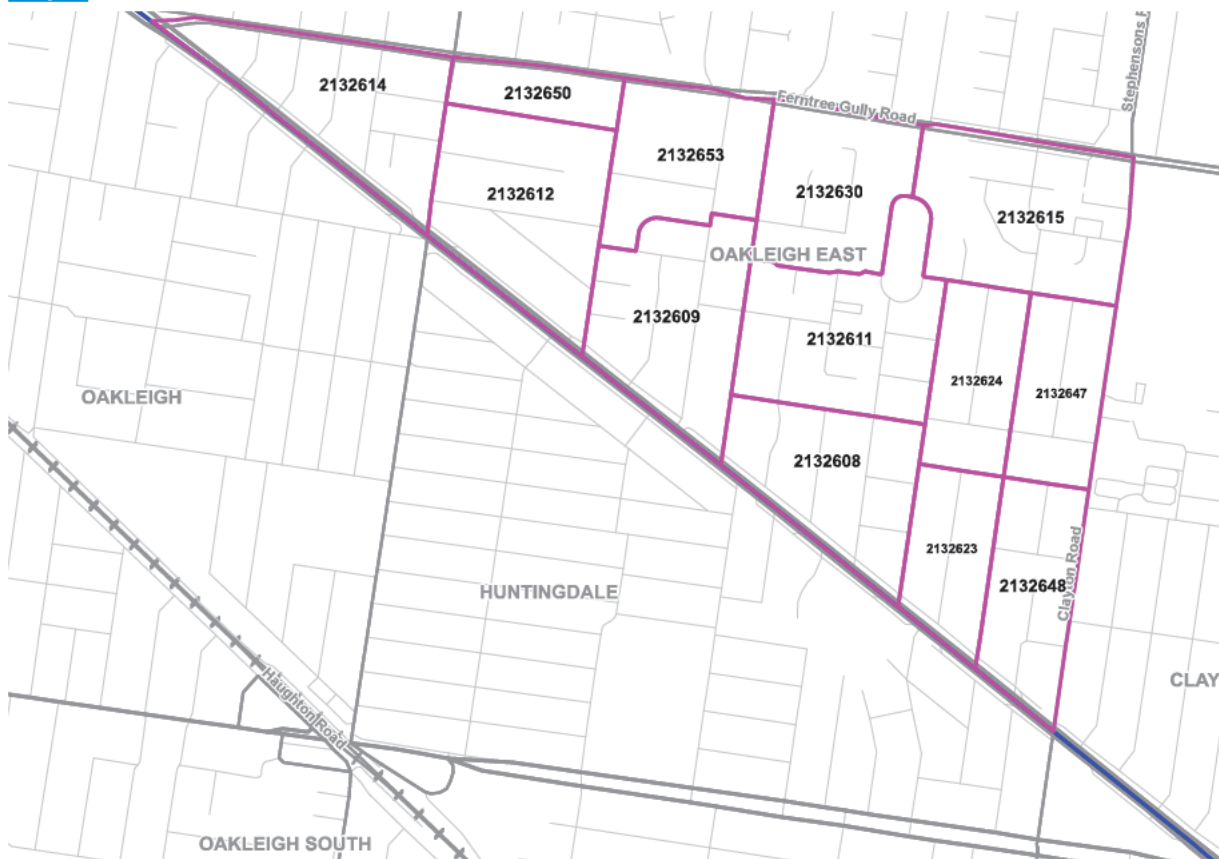
In order to give effect to the proposed reversion of electors to the Division of Chisholm from the proposed Division of Deakin as outlined above, the proposed Division of Chisholm would need to lose some electors. The Liberal Party proposes that the augmented Electoral Commission retain all the electors in the suburb of Oakleigh East in the Division of Hotham using Ferntree Gully Road and then Clayton Road as the boundary between the Divisions.

As with the proposed change to the boundary between the proposed Divisions of Deakin and Chisholm above, this proposed change would unite all of Oakleigh East in one division and also further reduce the transfer of electors between divisions in this Redistribution. Furthermore, Oakleigh East integrates with Oakleigh and the areas to its south, more so than to its north, and its retention in the Division of Hotham would strengthen the linked communities in both Divisions with this change to the proposed draft boundaries.

Table 4 Proposed Adjustments

	Actual	Projected
Proposed Division of Chisholm	113,624	118,494
Transfer to proposed Division of Hotham	-3,392	-3,520
Transfer from proposed Division of Deakin	+1,402	+1,437
Adjusted proposed Division of Chisholm	111,634	116,411

Map 5 Proposed Adjustments from Chisholm to Hotham





Hotham

While the Liberal Party suggested some more significant changes to the boundaries to the Division of Hotham, the Liberal Party generally supports the Redistribution Committee's proposed boundaries of the Division given the overall structure of all divisions in the southern suburbs of Melbourne.

The Liberal Party only suggests that the augmented Electoral Commission consider the retention of electors in Oakleigh East that are proposed to be transferred to the Division of Chisholm as it would improve the communities of interest in the Division given the links between the communities in Oakleigh East with those in Oakleigh.

Table 5 Proposed Adjustments

	Actual	Projected
Proposed Division of Hotham	111,834	117,010
Transfer from proposed Division of Chisholm	+3,392	+3,520
Adjusted proposed Division of Hotham	115,226	120,530

MORNINGTON PENINSULA

Flinders

The Liberal Party reiterates its support for the retention of the current boundaries for the Division of Flinders, as proposed in the Redistribution Committee's draft boundaries.

Dunkley

The Liberal Party reiterates its support for the retention of the current boundaries for the Division of Dunkley, as proposed in the Redistribution Committee's draft boundaries.

SOUTHERN-EASTERN SUBURBS

Isaacs

While the Liberal Party suggested significantly altered boundaries for the Division of Isaacs, the Liberal Party supports the Redistribution Committee's proposed draft boundaries for the Division, in light of its proposal to retain the existing boundaries of the Division of Goldstein and maintain the northern boundary of the Division of Isaacs west of Eastlink. Furthermore, the Liberal Party supports the Redistribution Committee's proposal to unite Dandenong in the Division of Bruce as it ensures strong and cohesive representation in the Parliament for the community.

Bruce

The Liberal Party supports the Redistribution Committee's proposed draft boundaries in the west of the Division of Bruce, especially the Committee's proposal to incorporate all of Dandenong and Dandenong North within the Division. However, the Liberal Party objects to the proposed boundary that splits Berwick along the Princes Highway.

The Liberal Party notes that the Committee justified transferring these electors to the Division of Bruce in order to align this boundary with the Casey City and Cardinia Shire LGA boundary and that the Committee stated that the Liberal Party supported this change in their suggestion. The Liberal Party would like to clarify that its suggestion related to the distinct communities on either side of this LGA boundary south of the Princes Freeway, and especially south of Ballarto Road, and not those in the north around Berwick and Narre Warren North. The communities in Berwick orient more strongly to those in Beaconsfield, Officer, and Pakenham to its east rather than to Narre Warren to the west. This is especially so when considered relative to the links between Clyde and Tooradin and their orientation towards communities to their west rather than east.

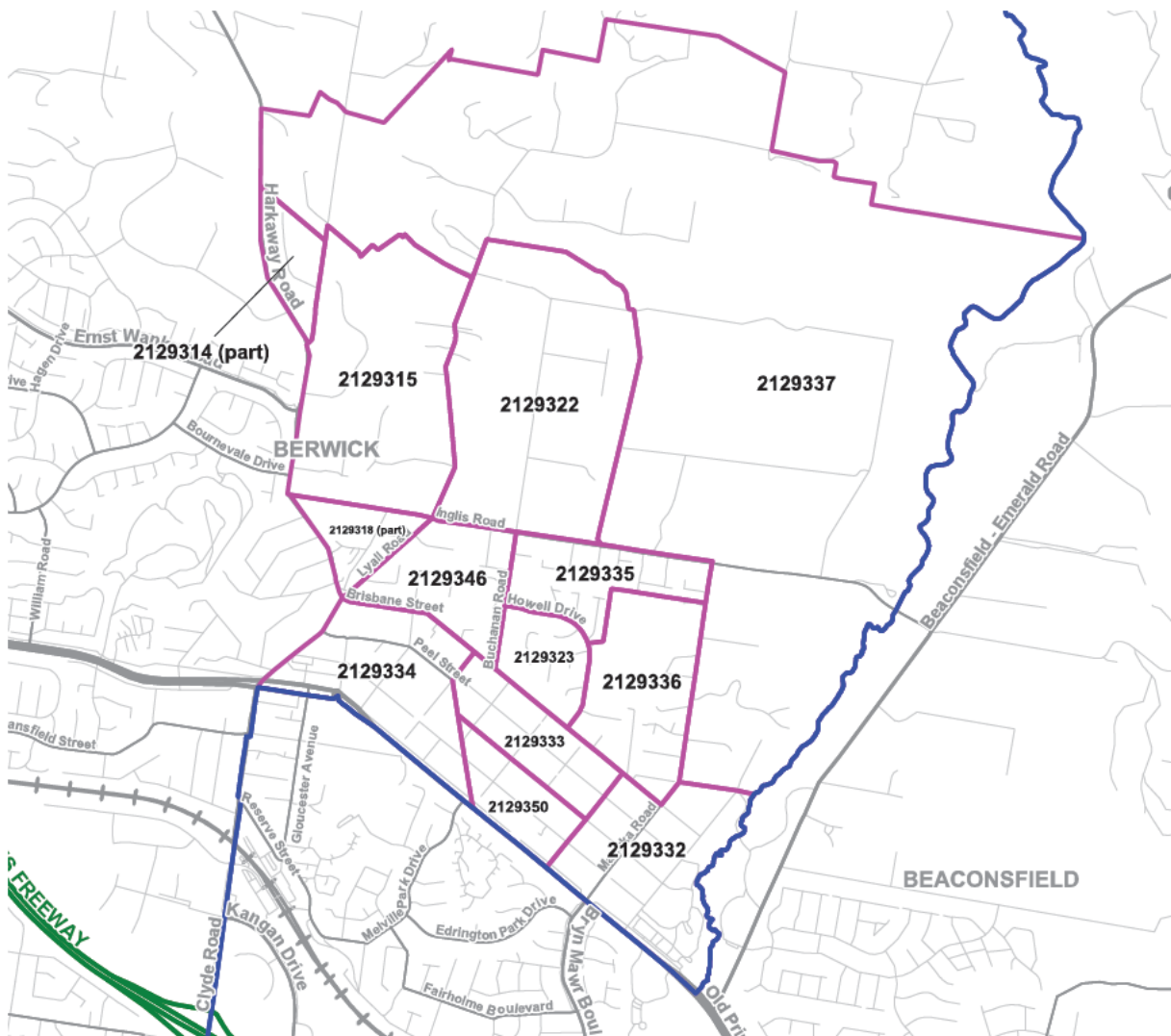
Therefore, the Liberal Party suggests to the augmented Electoral Commission that instead of transferring electors to the Division of Bruce in Berwick east of Harkaway Road and Lyall Road, the proposed boundary between the Divisions of Bruce and Holt is moved south in Hampton Park from Pound Road to Somerville Road and then River Gum Creek to the Hampton Park locality boundary. This change would allow for an improved alignment of communities in both Hampton Park and Berwick.

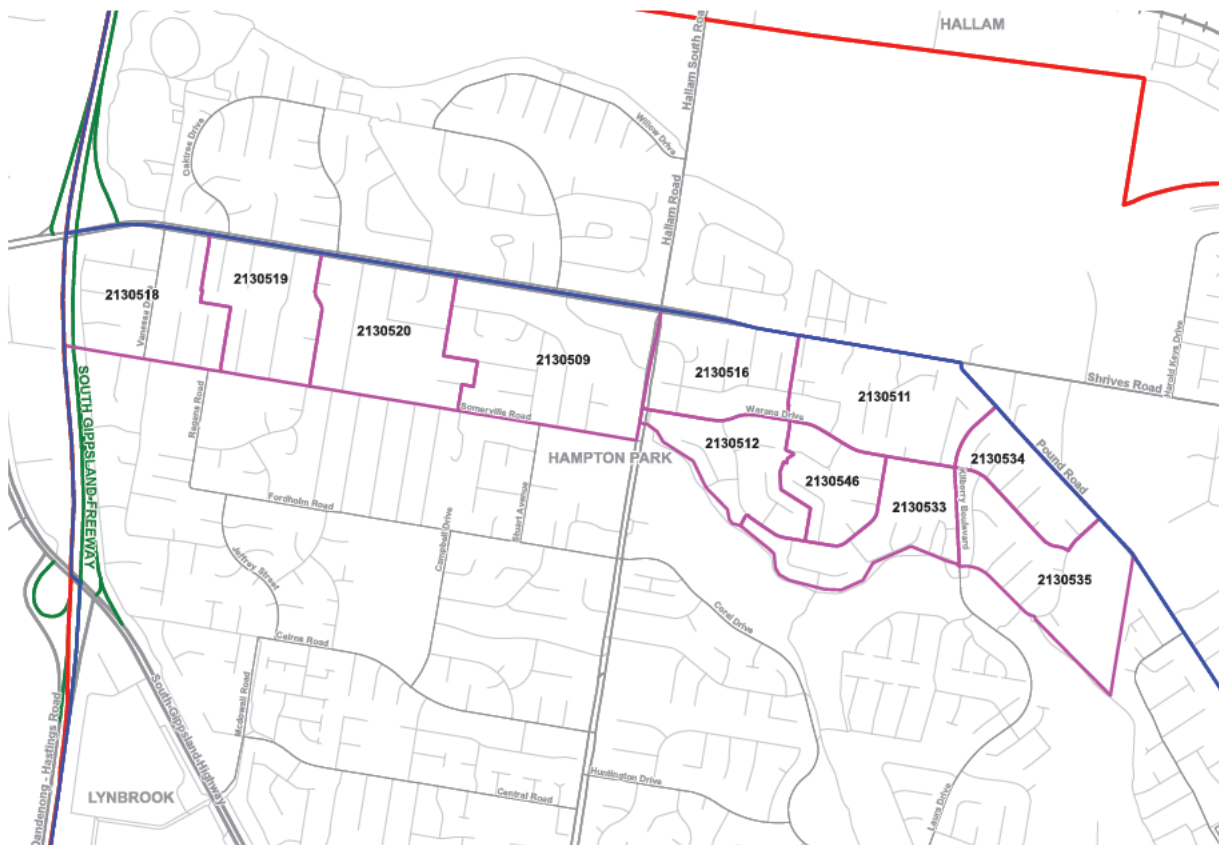
Table 6 Proposed Adjustments

	Actual	Projected
Proposed Division of Bruce	114,876	118,353
Transfer to proposed Division of La Trobe*	-3,393	-3,623
Transfer from proposed Division of Holt	+3,181	+3,315
Adjusted proposed Division of Bruce	114,664	118,045

*Note that there are two split SA1s that have not been transferred and need to also be apportioned between the two districts: 2129318 along Lyall Road that has 427 actual and 439 projected electors, and 2129314 along Harkaway Road that has 609 actual and 643 projected that do not make a material difference to meeting the requirement enrolment.

Map 6 Proposed Adjustments from Bruce to La Trobe




Map 7 Proposed Adjustments from Holt to Bruce


Holt

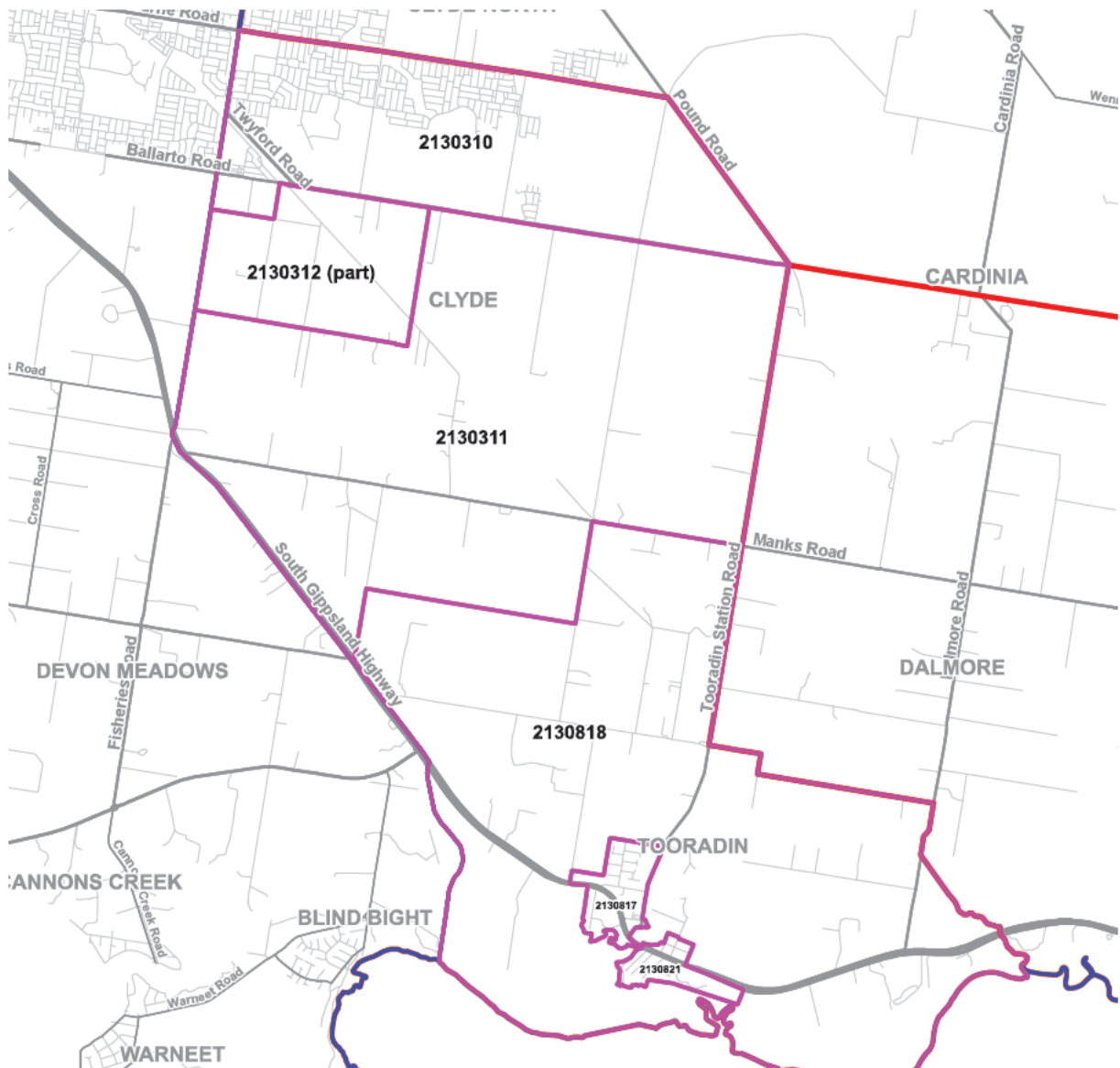
The Liberal Party supports the Redistribution Committee's proposed boundaries retaining the current boundaries with the Divisions of Dunkley and Flinders, and recognises the need for the transfer of the balance of Lyndhurst to the Division of Isaacs. The Liberal Party also supports the general alignment of the boundary through Narre Warren South and the retention of the existing Clyde Road boundary in Clyde North.

As referred to above under the Division of Bruce, the Liberal Party suggests that the augmented Electoral Commission consider a minor change to the boundary between the Divisions of Bruce and Holt in Hampton Park that would better align the communities within that suburb and enable a further change to improve the boundary with the suburb of Berwick.

Additionally, the Liberal Party suggests that the augmented Electoral Commission reconsider the transfer of electors in Clyde and Tooradin to the Division of La Trobe as they orient to their west in Cranbourne and along Westernport to the west within the Casey City LGA, rather than to their east in the Cardinia Shire LGA.

Table 7 Proposed Adjustments

	Actual	Projected
Proposed Division of Holt	99,534	117,807
Transfer to proposed Division of Bruce	-3,181	-3,315
Transfer from proposed Division of La Trobe	+3,120	+4,371
Adjusted proposed Division of Holt	99,473	118,863

Map 8 Proposed Adjustments from La Trobe to Holt

La Trobe

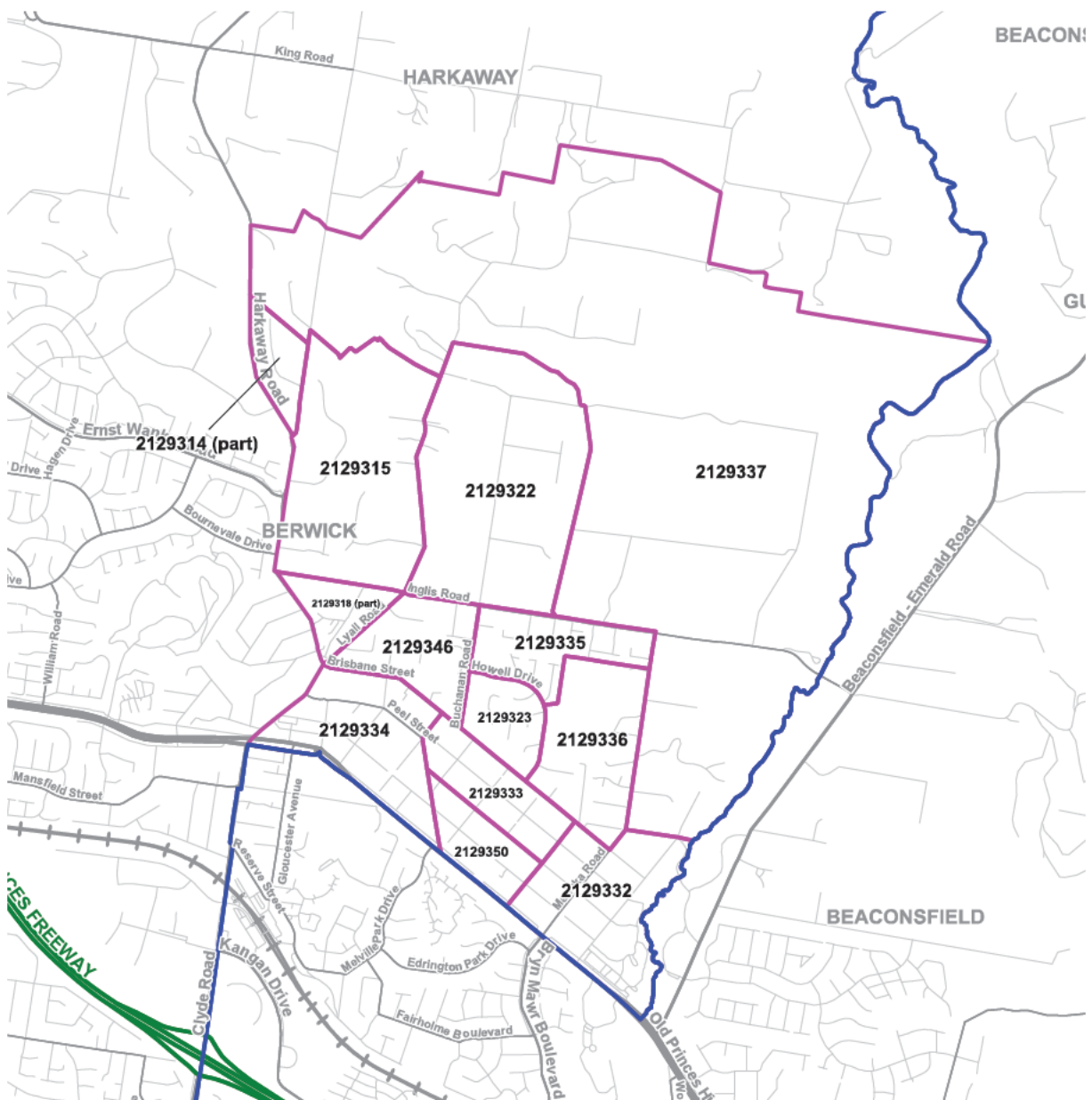
The Liberal Party reiterates its support for the Redistribution Committee's proposed draft boundaries in the east of the Division of La Trobe that incorporate the balance of Cardinia Shire LGA in the Division. However, the Liberal Party objects to the Redistribution Committee's proposed boundary within Berwick where it proposes to split the suburb along Princes Highway that is also its commercial centre. Additionally, Berwick is strongly connected with the communities to its east, in Beaconsfield, Officer, and also Pakenham to a greater extent than it is to those communities to its immediate west. Additionally, these easterly connections are far greater than those in Clyde and Tooradin that are being transferred to the Division from the Division of Holt.

Overall, the further splitting of Berwick, in the manner proposed, and the transfer of Clyde and Tooradin into the Division fragments these communities from those with which they share stronger community and transport ties. The Liberal Party proposes that the augmented Electoral Commission reconsider the transfer of electors in these areas and revert them back to their current divisions.

**Table 8** Proposed Adjustments

	Actual	Projected
Proposed Division of La Trobe	98,272	120,106
Transfer to proposed Division of Holt	-3,120	-4,371
Transfer from proposed Division of Bruce*	+3,393	+3,623
Adjusted proposed Division of La Trobe	98,545	119,358

*Note that there are two split SA1s that have not been transferred and need to also be apportioned between the two districts: 2129318 along Lyall Road that has 427 actual and 439 projected electors, and 2129314 along Harkaway Road that has 609 actual and 643 projected that do not make a material difference to meeting the requirement enrolment.

Map 9 Proposed Adjustments from Bruce to La Trobe

WESTERN SUBURBS**Lalor**

Given the various population pressures in Melbourne's south-western suburbs, the Liberal Party recognises the efforts of the Redistribution Committee in balancing the enrolment requirements with communities of interest and the other criteria in the proposed Division of Lalor. While the Party understands that these limitations have likely led to the need to transfer Williams Landing from the Division of Gellibrand to Lalor, this does present an imperfect alignment of this community as well as those to its north and south that would better align within the proposed Division of Gellibrand.

While the Liberal Party is unable to recommend an alternative that meets the enrolment requirements for the reversion of Williams Landing to the Division of Gellibrand, in the event the augmented Electoral Commission were to make changes elsewhere that would permit this change to the proposed draft boundaries, the Liberal Party would support the change.

Gorton

In light of the Redistribution Committee's proposed location for the new Division of Hawke, the Liberal Party supports the changes to the boundaries of the Division of Gorton. The boundaries consolidate the growing western suburbs of Melbourne with the more established suburbs in the city's west and allow for more compact Divisions throughout the area.

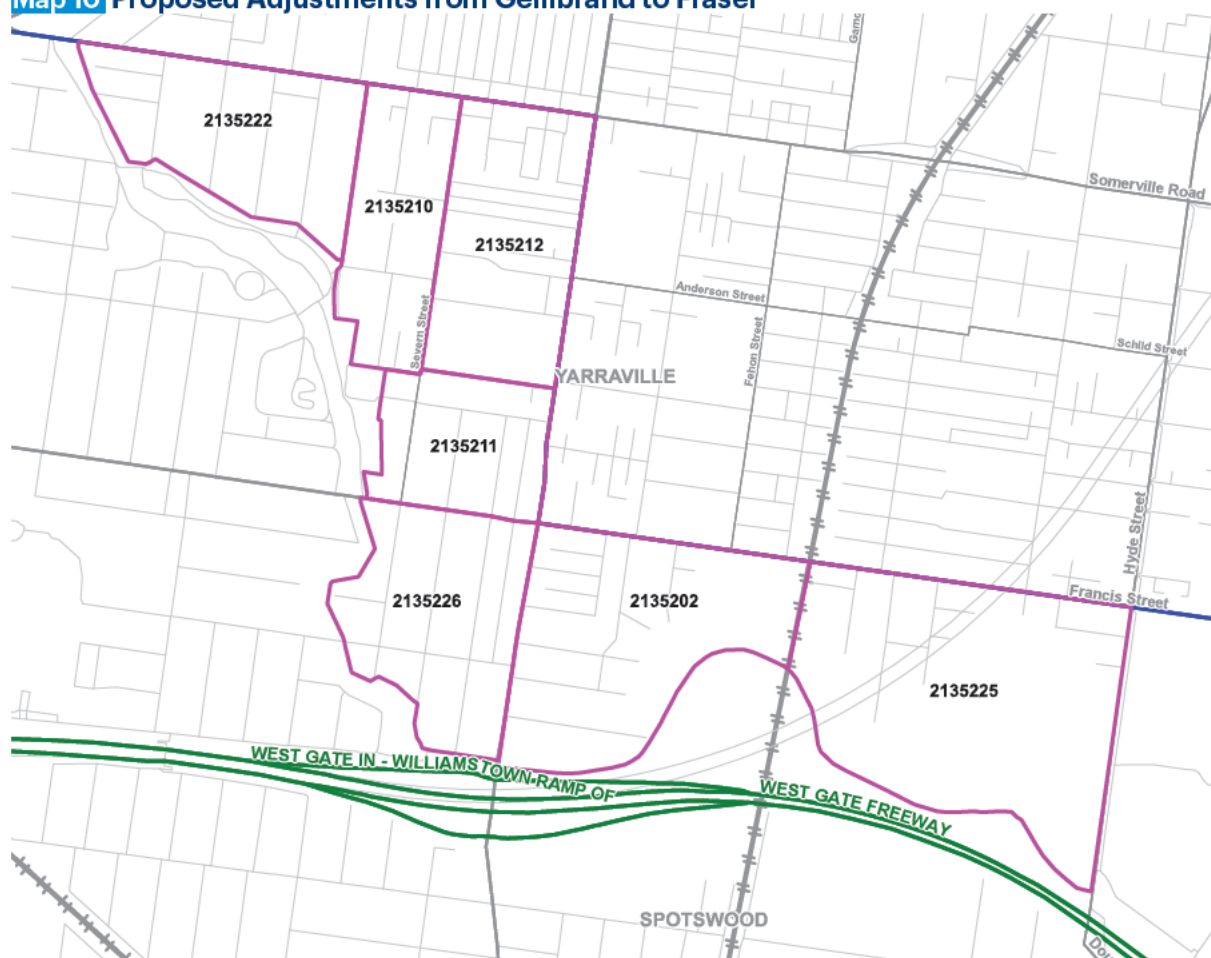
Fraser

The Liberal Party generally supports the changes in the Redistribution Committee's proposed draft boundaries for the Division of Fraser that see it moving east to incorporate the suburbs of Maribyrnong and Footscray, among others. However, the Liberal Party would like to request that the augmented Electoral Commission vary the proposed boundary between the Divisions of Fraser and Gellibrand in Yarraville to provide a more optimal division of the suburb from a community of interest standpoint.

The Liberal Party proposes that the boundary follow Stony Creek from Somerville Road to the Yarra River. This would provide for the majority of electors in Yarraville to be contained within a single Division and better aligns the communities on social, travel, and connectivity grounds than the proposed draft boundary.

Table 9 Proposed Adjustments

	Actual	Projected
Proposed Division of Fraser	110,937	116,440
Transfer to proposed Division of Gellibrand	-2,624	-2,803
Adjusted proposed Division of Fraser	108,313	113,637


Map 10 Proposed Adjustments from Gellibrand to Fraser


Gellibrand

The Liberal Party supports the Redistribution Committee's proposed incorporation of Truganina in the Division of Gellibrand. Additionally, the Liberal Party supports the subsequent transfer of Footscray, Kingsville, and part of Yarraville out of the Division. The Liberal Party, however, suggests to the augmented Electoral Commission that it reconsiders the proposed draft boundary within Yarraville to better improve the alignment of the community in Yarraville within the Division of Fraser along Stony Creek between Somerville Road and the Yarra River.

Additionally, while the Liberal Party recognises the difficulty in addressing the requirements of the Act in the high growth areas in the south-west of Melbourne, the augmented Electoral Commission should give consideration to not transferring Williams Landing out of the Division of Gellibrand, as proposed in the draft boundaries, as not only does it link to the communities to its north and south, it is also the link between these two areas of the proposed Division of Gellibrand. If the augmented Electoral Commission were to make other changes that enable reversing this transfer, it would improve the alignment of the communities in this area, and the Liberal Party would be supportive of this change.

Table 10 Proposed Adjustments

	Actual	Projected
Proposed Division of Gellibrand	105,930	117,361
Transfer from proposed Division of Fraser	+2,624	+2,803
Adjusted proposed Division of Gellibrand	108,554	120,164

NORTH-WESTERN SUBURBS

Maribyrnong

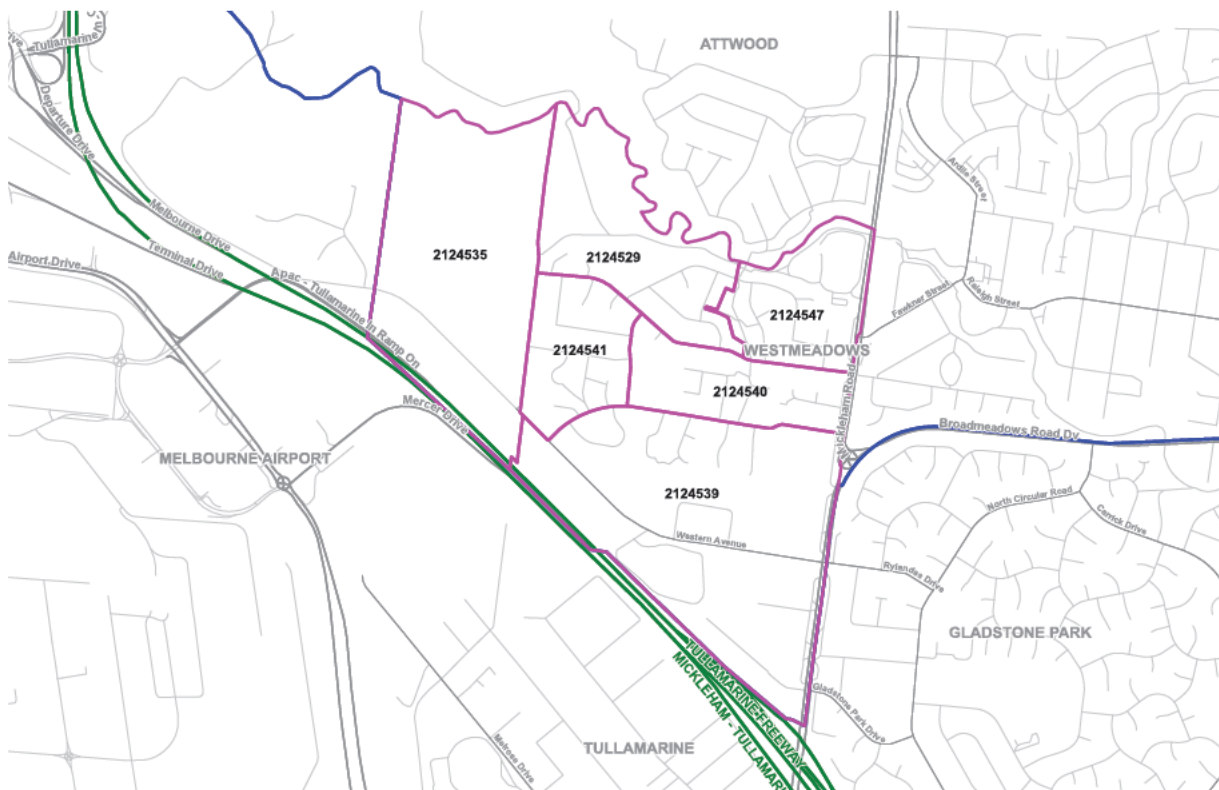
The Liberal Party generally supports the Redistribution Committee's proposed draft boundaries for the Division of Maribyrnong in light of the different location of the new division being on the western fringe of Metropolitan Melbourne.

The Liberal Party suggests, however, that the Redistribution Committee could improve the alignment of communities in the north of the Division by making a small adjustment to the proposed Division's northern boundary to incorporate the part of Westmeadows to the west of Mickleham Road as previously suggested by the Liberal Party for the boundary between the Divisions of Calwell and Wills. This small change would improve the alignment of the communities of Gladstone Park and part of Westmeadows that use the Gladstone Park Shopping Centre and are in the Gladstone Secondary College school zone.

Table 11 Proposed Adjustments

	Actual	Projected
Proposed Division of Maribyrnong	109,869	116,598
Transfer from proposed Division of Calwell	+1,550	+1,520
Adjusted proposed Division of Maribyrnong	111,419	118,118

Map 11 Proposed Adjustments from Calwell to Maribyrnong



Calwell

The Liberal Party generally supports the Redistribution Committee's proposed draft boundaries of the Division of Calwell that retain the existing northern and eastern boundaries, while only transferring out electors in the south-eastern part around Tullamarine and Melbourne Airport.



The Liberal Party notes that the Committee has followed the locality boundary of Westmeadows in setting the part of the south-western boundary of the Division and requests that the Committee reconsider the Liberal Party's suggested boundary along Moonee Ponds Creek and Mickleham Road to better align the communities in the western part of Westmeadows as they orient towards Gladstone Park in the south-east rather than Greenvale to their north. While it would have been more ideal to follow Moonee Ponds Creek for its entire length through Westmeadows, it is not possible to do so without further changes to the Division of Calwell. The augmented Electoral Commission can improve the alignment of these communities within the divisions by making this minor change and transferring the electors in Westmeadows west of Mickleham Road to the Division of Maribyrnong.

Table 12 Proposed Adjustments

	Actual	Projected
Proposed Division of Calwell	99,781	116,976
Transfer to proposed Division of Maribyrnong	-1,550	-1,520
Adjusted proposed Division of Calwell	98,231	115,456

Hawke

The Liberal Party reiterates its support for the Redistribution Committee's proposal to name the new Division after the Hon Robert (Bob) James Lee Hawke AC.

Although the Liberal Party suggested a different location for the new Division of Hawke in the inner northern suburbs of Melbourne, it is supportive of the Redistribution Committee's proposed location for the Division as it mostly maintains a characteristically distinct division on the peri-urban fringe of Melbourne.

The only area of concern that the Liberal Party would raise, albeit recognising the need to comply with the requirements of the Act, would be in including the suburb of Hillside in the Division as it is distinctly a western suburb of Melbourne that orients towards its south-east and has little shared communities of interest to the north-west in Sunbury or Melton on which the proposed Division is focussed.

NORTHERN SUBURBS

Melbourne

The Liberal Party reiterates its support for the transfer of Kensington to the Division of Maribyrnong and the uniting of Clifton Hill within the Division of Melbourne. Furthermore, the Liberal Party supports the proposed retention of other boundaries of the Division. In light of this, there is a possibility for the Redistribution Committee to further retain an additional boundary in Brunswick East along Nicholson and Park Streets.

The area that is proposed to be transferred into the Division of Melbourne orients more towards its north and west in Brunswick and Brunswick North, rather than towards Fitzroy North that is to its east.

Furthermore, by retaining this boundary, the augmented Electoral Commission would be able to retain the Division of Wills unchanged in this Redistribution.

Table 13 Proposed Adjustments

	Actual	Projected
Proposed Division of Melbourne	108,204	119,625
Transfer from proposed Division of Wills	-3,189	-3,876
Adjusted proposed Division of Melbourne	105,015	115,749

Map 12 Proposed Adjustments from Melbourne to Wills



Wills

The Liberal Party supports the Redistribution Committee's proposed draft boundaries for the Division of Wills that retain its current western, northern, and eastern boundaries. The Liberal Party suggests that the augmented Electoral Commission consider retaining the current boundary of the Division of Wills in Brunswick East. This would allow for a better alignment of communities in the inner north of Melbourne and ensure that Brunswick East is not disconnected within a different Division from those communities to its north and west with which it shares strong social and community links.

The Liberal Party also notes that the proposed draft boundary deviates from both the locality and LGA boundary.

Table 14 Proposed Adjustments

	Actual	Projected
Proposed Division of Wills	108,904	116,877
Transfer to proposed Division of Melbourne	+3,189	+3,876
Adjusted proposed Division of Wills	112,093	120,753

Cooper

While the Liberal Party suggested different boundaries for the Division of Cooper, these were predicated on a different location for the new Division of Hawke. As the Redistribution Committee is proposing a different location for the new Division of Hawke, the Liberal Party supports the proposed draft boundaries for the Division of Cooper, as it allows Clifton Hill to be wholly united in the Division of Melbourne, in line with the Party's earlier suggestion for the Division of Melbourne.



Jagajaga

While the Liberal Party had suggested different boundaries for the Division of Jagajaga, in light of the Redistribution Committee's proposal for the new Division of Hawke to be located on the western fringe of Melbourne, the Party supports the proposed retention of the the current western and southern boundaries of the Division and the incorporation of Eltham and Kangaroo Ground into the Division.

Scullin

In light of the Redistribution Committee proposing in its draft boundaries to locate the new Division of Hawke on the western fringe of Melbourne, the Liberal Party supports the Committee's draft proposal to retain the current boundaries of the Division of Scullin.







Objections to the proposed draft boundaries for the Federal Redistribution of Victoria

by the Liberal Party of Australia (Victorian Division)

16 April 2021

